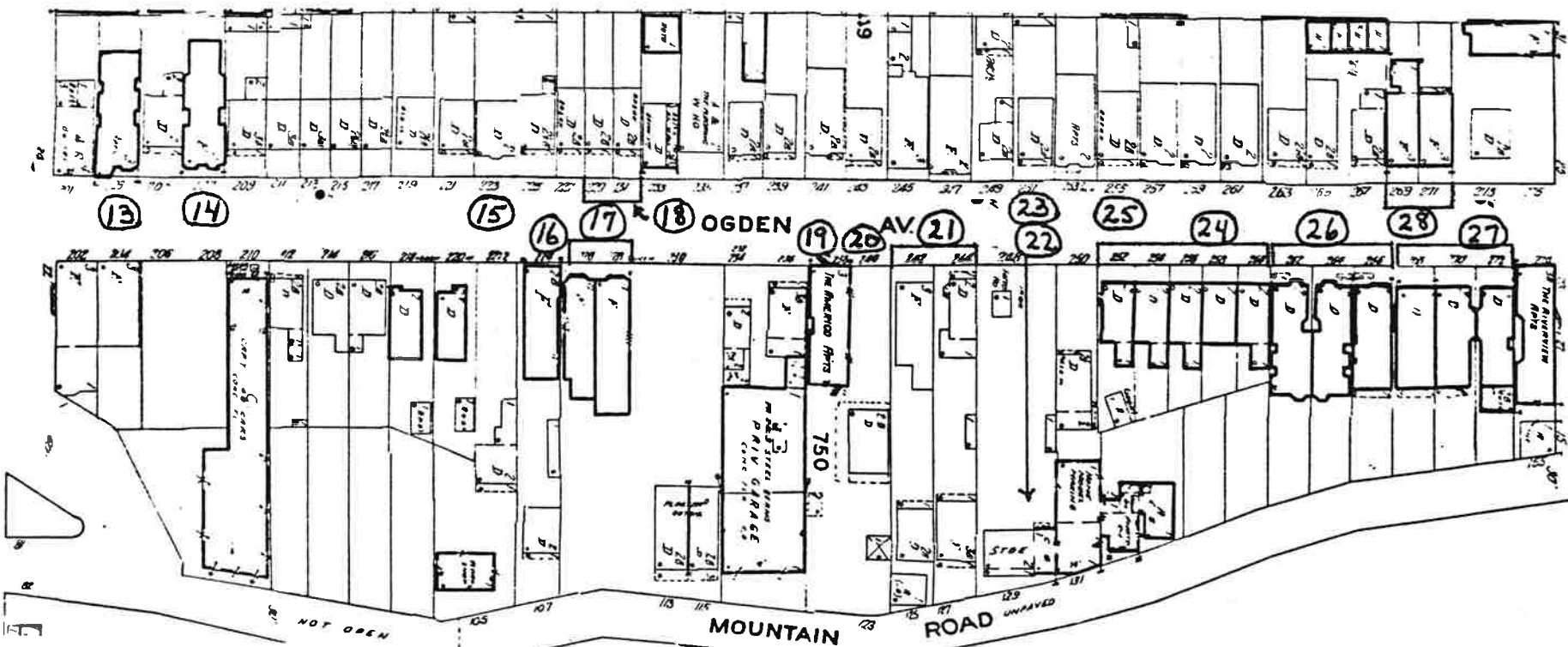


USHSI #0906  
D609  
Ogden Avenue  
(Washington Village Washington Road)  
Page 1 of 3 map pages

GRIFFITH



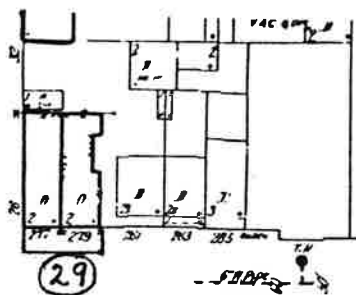
Bowers St.

768

OGDEN AV.

769

GRIFFITH



NJHSI # 0906

D609

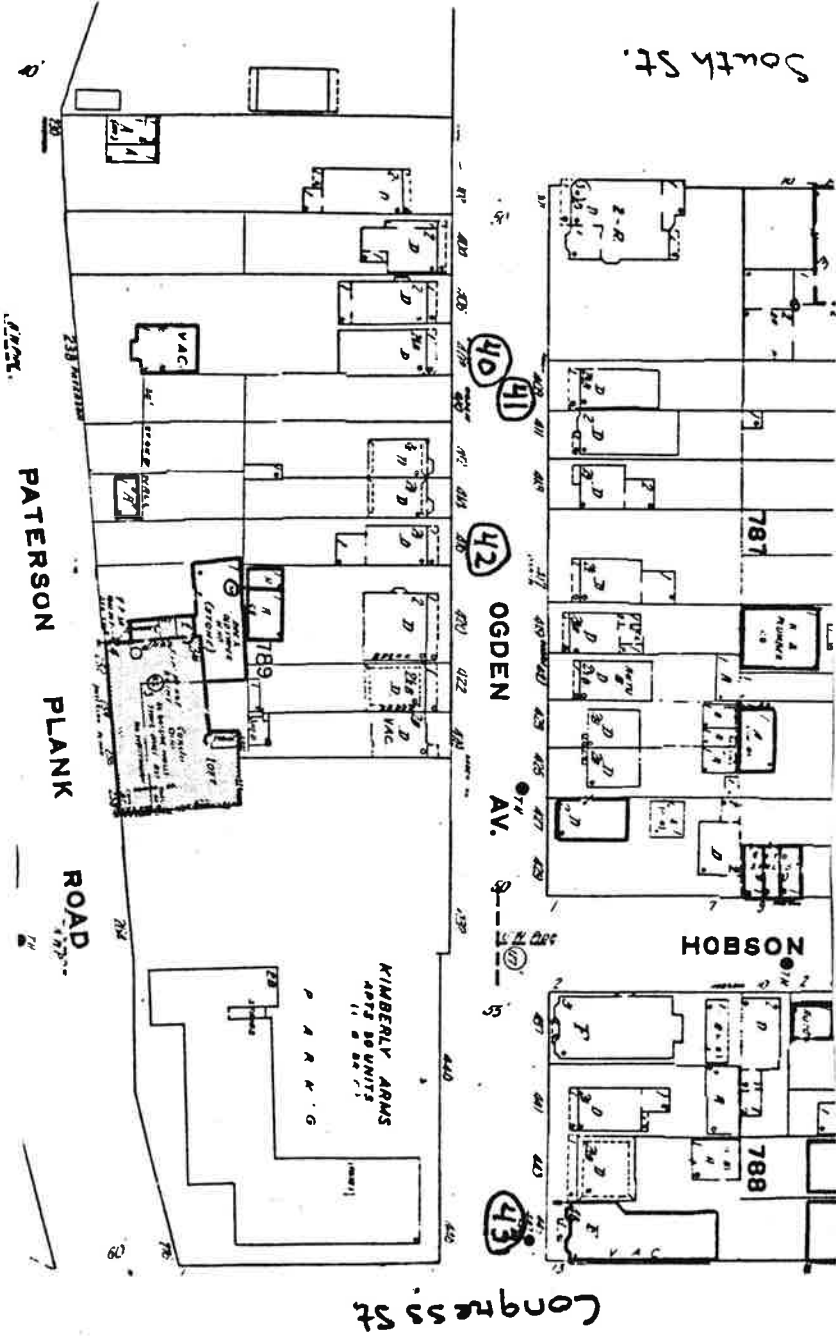
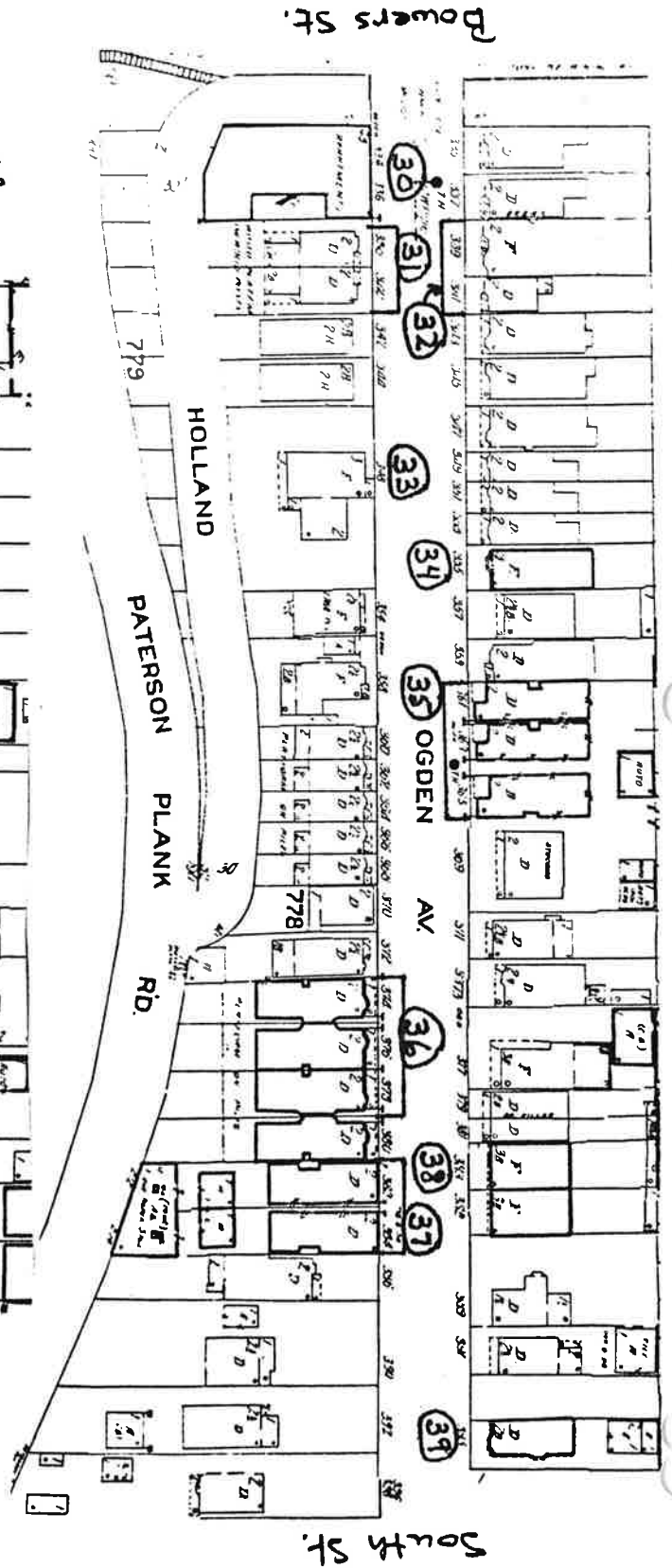
Ogden Avenue

(Washington Village Neighborhood)

Page 2 of 3 map pages.

Franklin St.

NJHSI # 0906  
 D 6 09  
 Ogden Avenue  
 (Washington Village Neighborhood)  
 Page 3 of 3 map pages.



MAP #	ADDRESS/LOCATION : PROPERTY NAME	DATE	Signifi- cance to D/S	Condition	USE	DESCRIPTION: Style, Ext. Wall Fabric, Fenestration, Form, Roof, Major Features, Alterations, Storics, etc.	NEGATIVE FILE #
1.	102-104 Ogden Avenue Block: 723 (Contact: 244/29)	Between 1908- 1919	P Dist.	G	R <sup>2</sup>	Decorated Brick, 4 stories with basement, 8 bays, brick, 1 main entry, I-shaped plan. GROUND STORY: Small porch carried on brick piers with stone bases is set before main entry; brick coursed to form horizontal bands; rectangular windows with stone sills and lintels. 2nd-4th STORIES: Rectangular windows with stone sills and lintels with keystone; all windows with 1/1 sash; brick pilasters with stone bases divide facade into sections of 2 bays each; pilasters form turrets above roofline; decorative brick band above 4th story windows.	Contact: 244/29
2.	108-110 Ogden Avenue Block: 723 (Contact: 244/28,30)	Between 1896- 1908	P Dist.	G/ E	R <sup>2</sup>	2 matching Italianate Variant buildings, 3 story with basement, brick, each with 1 main entry and rectangular plan. Main entries with bracketed stone overdoors; each entry flanked by tripartite projecting bay rising height of building; rectangular windows with 1/1 sash and continuous stone lintels and sills; cartouche on 3rd story above entry; decorative panelling above 3rd story windows; bracketed cornice with dentils; intricate metal railings down steps and along sidewalk.	Contact: 244/28,30

MAP #	ADDRESS/LOCATION : PROPERTY NAME	DATE	Signifi- cance to D/S	Condition	USE	DESCRIPTION: Style, Ext. Wall Fabric, Fenestration, Form, Roof, Major Features, Alterations, Stories, etc.	NEGATIVE FILE #
3.	117 Ogden Avenue Block: 722A (Contact: 244/27)	Between 1896- 1908	P Dist.	G	R <sup>2</sup>	Georgian Revival Variant, 3 stories, brick, 1 main entry, rectangular plan. Stone porch carried on stone columns with Ionic capitals is set before main entry; entry flanked by tripartite and multi-sided projecting bay; rectangular windows with 1/1 sash and stone lintels with keystone; stone belt courses form continuous sills; porch cornice continues as stone belt course above ground story; cornice topped by brick parapet. Brick panels on multi-sided bay and above entry appear to be original, rather than bricked-in windows.	Contact: 244/27
4.	120 Ogden Avenue Block: 723 (Contact: 244/26)	Between 1887- 1896	P Dist.	E	R <sup>2</sup>	Italianate Variant, 3 stories, frame, 1 main entry, rectangular plan with rear extension. Porch with bracketed pent roof is set on turned posts before main entry; entry flanked by 2 bay projections rising height of building; rectangular windows with 1/1 sash; bracketed pent roofs above each story of projections; building terminates in continuous bracketed pent roof with modillions and swag decorated frieze. Building has been resurfaced.	Contact: 244/26

MAP #	ADDRESS/LOCATION : PROPERTY NAME	DATE	Signifi- cance to D/S	Condition	USE	DESCRIPTION: Style, Ext. Wall Fabric, Fenestration, Form, Roof, Major Features, Alterations, Stories, etc.	NEGATIVE FILE #
5.	127 Ogden Avenue Block: 722A (Contact: 244/25)	Between 1908- 1919	P Dist.	E	R <sup>2</sup>	Georgian Revival, 3 stories with basement, 4 bays, brick, 1 main entry, I-shaped plan with rear extension. Gable roofed overdoor with brackets, ornate cartouche in the tympanum, and cartouche decorated frieze; rectangular windows with 1/1 sash, stone lintels, and brick sills; 3rd story windows with round arched heads with decorated tympanums; brick panels beneath windows; brick quoins; bracketed cornice with modillions, dentils, and decorative panelled frieze.	Contact: 244/25
6.	140 Ogden Avenue Block: 723 (Contact: 244/24)	Between 1896- 1908	P Dist.	E	R <sup>2</sup>	Renaissance Revival, 3 stories, 5 bays, brick, 1 main entry, rectangular plan. Rectangular windows with 1/1 sash, stone sills and lintels (the latter with keystones on 2nd-3rd stories); stone portal head; stone water table; facade divided into 3 sections by brick pilasters with ornate stone capitals; bracketed cornice.	Contact: 244/24

NEW JERSEY OFFICE OF CULTURAL AND ENVIRONMENTAL SERVICES  
 HISTORIC PRESERVATION SECTION  
 DISTRICT/STREETSCAPE CONTINUATION SHEET

N.J. HISTORIC SITES INVENTORY

Date 8/85

District/Streetscape Continuation Page # 4. Inventory # 0906-D6 og

MAP #	ADDRESS/LOCATION : PROPERTY NAME	DATE	Signifi- cance to D/S	Condition	USE	DESCRIPTION: Style, Ext. Wall Fabric, Fenestration, Form, Roof, Major Features, Alterations, Stories, etc.	NEGATIVE FILE #
7.	153 Ogden Avenue Block: 739 (Contact: 244/23)	Before 1873	P Dist.	G/ F	R <sup>1</sup>	Greek Revival, 2 stories, 3 bays, brick, 1 main entry, rectangular plan. Rectangular windows with 2/2 sash on ground story, 1/1 sash on 2nd story, stone lintels and sills; stone water table; bracketed cornice with frieze decorated in relief. Property listed on 1873 map as belonging to R. Muller.	Contact: 244/23
8.	154 Ogden Avenue Block: 740 (Contact: 185/21)	Between 1873- 1887	SR (June 1985)	G	Y	Italianate, 3 stories, 5 bays, brick, 1 main entry, rectangular plan. Main entry with panelled stone surround and bracketed over door topped by balcony; excepting those above entry, rectangular windows with 1/1 sash and bracketed stone cornice heads; stone belt courses form continuous sills; 2nd story window above entry double with round arched head and triangular pediment; 3rd story window above entry double, each with round arched head; panelled turrets at corners of building rise above roof line; triangular pediment with bull's eye window. Built as Pohman's Social Club, a German Society.	Contact: 185/21

NEW JERSEY OFFICE OF CULTURAL AND ENVIRONMENTAL SERVICES  
HISTORIC RESERVATION SECTION  
DISTRICT/STREETSCAPE CONTINUATION SHEET

N.J. HISTORIC SITES INVENTORY

Date 8/85

District/Streetscape Continuation Page # 5 Inventory # 0906-D6 og

MAP #	ADDRESS/LOCATION : PROPERTY NAME	DATE	Signifi- cance to D/S	Condition	USE	DESCRIPTION: Style, Ext. Wall Fabric, Fenestration, Form, Roof, Major Features, Alterations, Stories, etc.	NEGATIVE FILE #
9.	163-165 Ogden Avenue Block: 739 (Contact: 244/21)	Between 1887- 1896	P Dist.	G	C/R	Italianate, 2 stories, brick, 2 entries, rectangular plan. GROUND STORY: Excluding modern garage door, segmentally arched brick window and portal heads; windows with stone sills; stone belt course with brick dentils at top of story. 2nd STORY: Central triple window: long central window with bracketed triangular pedimented head flanked by windows with bracketed cornice heads; remaining single windows with bracketed triangular pedimented heads; all windows rectangular with 1/1 sash; stone belt course forms continuous sill. Area between 2nd story windows and roof line has been covered with modern siding.	Contact: 244/21
10.	164 Ogden Avenue Belvedere Apartments Block: 740 (Contact: 244/22)	Between 1919- 1928	P Dist.	G	R <sup>2</sup>	Decorated Brick, 4 stories with basement, 3 bays, brick, 1 main entry, rectangular plan. Main entry with stone surround; double windows with 3/1 or 2/1 sash and continuous stone sills; curvilinear brick parapet.	Contact: 244/22



NEW JERSEY OFFICE OF CULTURAL AND ENVIRONMENTAL SERVICES  
 HISTORIC RESERVATION SECTION  
 DISTRICT/STREETSCAPE CONTINUATION SHEET

N.J. HISTORIC SITES INVENTORY

Date 8/85

District/Streetscape Continuation Page # 6. Inventory # 0906-D6 og

MAP #	ADDRESS/LOCATION : PROPERTY NAME	DATE	Signifi- cance to D/S	Condition	USE	DESCRIPTION: Style, Ext. Wall Fabric, Fenestration, Form, Roof, Major Features, Alterations, Stories, etc.	NEGATIVE FILE #
11.	168-176 Ogden Avenue (5 buildings) Block: 740 (Contact: 244/20)	Between 1919- 1928	P Dist.	G	R <sup>1</sup>	5 Decorated Brick rowhouses, 2 stories, brick; each with 2 bays, 1 main entry, and rectangular plan. Each house with porch set on brick piers, triple window with continuous stone sill on each story, single window over entry, and decorative brick banding topped by parapet with central triangular elevation. Houses of light colored brick with dark decoration alternate with houses of dark colored brick and light decoration.	Contact: 244/20
12.	193-195 Ogden Avenue Block: 739 (Contact: 244/19)	Between 1896- 1908	P Dist.	F/ P	V	2 Italianate Variant buildings with continuous facade, 4 stories, brick, rectangular plan. 2 metal, curvilinear projecting bays extend from the 2nd - 4th stories; matching metal corner turret rises from 2nd story to roof line; decorative panelling below windows of bays and turret; remaining windows with stone lintels and sills; all windows rectangular; continuous bracketed cornice. Building undergoing renovation.	Contact: 244/19

NEW JERSEY OFFICE OF CULTURAL AND ENVIRONMENTAL SERVICES  
HISTORIC RESERVATION SECTION  
DISTRICT/STREETSCAPE CONTINUATION SHEET

N.J. HISTORIC SITES INVENTORY

Date 8/85

District/Streetscape Continuation Page # 7. Inventory # 0906-D6 og

MAP #	ADDRESS/LOCATION : PROPERTY NAME	DATE	Signifi- cance to D/S	Condition	USE	DESCRIPTION: Style, Ext. Wall Fabric, Fenestration, Form, Roof, Major Features, Alterations, Stories, etc.	NEGATIVE FILE #
13.	203 Ogden Avenue Block: 749 (Contact: 10/2)	Between 1908- 1919	P Dist.	G	R <sup>2</sup>	Italianate variant, 3 stories, brick, 1 main entry, irregular rectangular plan. Stone portal head; rectangular windows with 1/1 sash, stone sills, and stone lintels (flat arched with keystone on 2nd-3rd stories); entry flanked by projecting bays rising height of building; panelling on each story above entry; stone belt course at top of ground story; bracketed cornice with decorated frieze.	Contact: 10/2
14.	207 Ogden Avenue Block: 749 (Contact: 10/3)	Between 1908- 1919	P Dist.	G/ F	R <sup>2</sup>	Italianate Variant, 3 stories, brick, 1 main entry, irregular rectangular plan. Stone portal head with keystone; stone belt course at top of ground story; 2 tripartite projecting bays rise height of building; rectangular windows with 1/1 sash, stone sills, and flat arched stone lintels with keystone (except 2 on ground story of each bay); 2 small, narrow windows with continuous stone sills and flat arched stone lintels with keystone on each story above entry; bracketed cornice with modillions and decorated frieze.	Contact: 10/3

MAP #	ADDRESS/LOCATION : PROPERTY NAME	DATE	Signifi- cance to D/S	Condition	USE	DESCRIPTION: Style, Ext. Wall Fabric, Fenestration, Form, Roof, Major Features, Alterations, Stories, etc.	NEGATIVE FILE #
15.	223 Ogden Avenue Block: 749 (Contact: 10/7)	Between 1887- 1896	P Dist.	G	R <sup>1</sup>	Italianate Variant, 2 stories, frame, 1 main entry, rectangular plan. Tripartite projecting bay rises height of building; rectangular windows with 1/1 sash (except window over entry with 2/2 sash); windows not on bay with cornice heads; bracketed cornice topped by pent roof. Building has been resurfaced.	Contact: 10/7
16.	224 Ogden Avenue Block: 750 (Contact: 244/17)	After 1928	P Dist.	E	R <sup>2</sup>	Decorated Brick, 3 stories, 3 bays, brick, 1 main entry, rectangular plan. Rectangular windows with stone sills, and on 2nd-3rd stories, round arched heads; stone disk accents topped by brick parapet with central triangular elevation.	Contact: 244/17

NEW JERSEY OFFICE OF CULTURAL AND ENVIRONMENTAL SERVICES  
HISTORIC PRESERVATION SECTION  
DISTRICT/STREETSCAPE CONTINUATION SHEET

N.J. HISTORIC SITES INVENTORY

Date 8/85

District/Streetscape Continuation Page # 9. Inventory # 0906-D6 og

MAP #	ADDRESS/LOCATION : PROPERTY NAME	DATE	Signifi- cance to D/S	Condition	USE	DESCRIPTION: Style, Ext, Wall Fabric, Fenestration, Form, Roof, Major Features, Alterations, Stories, etc.	NEGATIVE FILE #
17.	226-228 Ogden Avenue Block: 750 (Contact: 244/16)	Between 1908- 1919	P Dist.	G	R <sup>2</sup>	Twin Italianate Variant buildings, 4 stories, brick, each with 1 main entry and rectangular plan. Each building with tripartite projecting bay rising height of structure; rectangular windows with 1/1 sash and stone cornice heads; stone belt courses running across entire facade from continuous sills; panelling replaces central window of bays on 2nd-4th stories; bracketed cornices with swag decorated frieze.	Contact: 244/16
18.	229-231 Ogden Avenue Block: 749 (Contact: 10/9)	Between 1873- 1887	P Dist.	G/ E	R <sup>1</sup>	Matching Italianate rowhouses, 2 stories with basement, frame; each with 3 bays, 1 main entry, and rectangular plan. <u>GROUND STORY</u> : Wooden porch with bracketed cornice set on turned posts extends across entire facade; each entry with transom; each building with tripartite window. <u>2nd STORY</u> : Rectangular windows with 1/1 sash; bracketed cornice. Buildings have been resurfaced and trim removed; ground story fenestration has been altered. Originally part of a group of 3 rowhouses including #227 which has been radically altered.	Contact: 10/9

NEW JERSEY OFFICE OF CULTURAL AND ENVIRONMENTAL SERVICES  
HISTORIC RESERVATION SECTION  
DISTRICT/STREETSCAPE CONTINUATION SHEET

N.J. HISTORIC SITES INVENTORY

Date 8/85

District/Streetscape Continuation Page # 10. Inventory # 0906-D6 og

MAP #	ADDRESS/LOCATION : PROPERTY NAME	DATE	Signifi- cance to D/S	Condition	USE	DESCRIPTION: Style, Ext. Wall Fabric, Fenestration, Form, Roof, Major Features, Alterations, Stories, etc.	NEGATIVE FILE #
19.	238 Ogden Avenue The Americo Apartments Block: 750 (Contact: 244/15)	Between 1919- 1928	P Dist.	E	R <sup>2</sup>	Decorated Brick, 3 stories, 2 bays, brick, 1 main entry, rectangular plan. <u>GROUND STORY</u> : Double and single windows with bracketed stone sills. <u>2nd-3rd stories</u> : double windows with continuous stone sills; stone accents; decorative brick banding topped by battlemented brick parapet.	Contact: 244/15
20.	240 Ogden Avenue Block: 750 (Contact: 244/14)	C. 1858	P Dist. (HDC- 1978)	E	R <sup>1</sup>	Gothic Revival, 2 story with basement, 3 bays, frame, 1 main entry, rectangular plan, deeply set back. <u>GROUND STORY</u> : Wooden veranda set on posts extends along front and southern elevations; main entry with compound pointed arch wood surround and panelled door with cusped arches; windows with pointed arch wood surround and 2 rectangular lights topped by 3 triangular ones. <u>2nd STORY</u> : Rectangular windows with 1/1 sash and wood enframements; heavy cornice. Roof and porch probably not original. Former home of actress Pearl White, the heroine of "The Perils of Pauline". Property listed on the 1873 map as belonging to the estate of Schuremann.	Contact: 244/14

NEW JERSEY OFFICE OF CULTURAL AND ENVIRONMENTAL SERVICES  
HISTORIC PRESERVATION SECTION  
DISTRICT/STREETSCAPE CONTINUATION SHEET

N.J. HISTORIC SITES INVENTORY

Date 8/85

District/Streetscape Continuation Page # 11. Inventory # 0906-D6 og

MAP #	ADDRESS/LOCATION : PROPERTY NAME	DATE	Signifi- cance to D/S	Condition	USE	DESCRIPTION: Style, Ext. Wall Fabric, Fenestration, Form, Roof, Major Features, Alterations, Stories, etc.	NEGATIVE FILE #
21.	242-244 (Front) Ogden Avenue Block: 750 (Contact: 244/13)	Between 1873- 1887	P Dist.	E	R <sup>2</sup> R <sup>1</sup>	#242: Italianate, 3 stories, 3 bays, frame, 1 main entry, rectangular plan with rear extension. Main entry with triangular pedimented head, transom, and wood surround; rectangular windows with 1/1 sash and wood surround; bracketed cornice. Building has been resurfaced. #244: Italianate, 2 stories, 2 bays, frame, rectangular plan with rear extension. Porch with bracketed cornice set on posts extends across ground story; rectangular windows with 2/2 sash and wood enframements; bracketed cornice with modillions. Building has been resurfaced.	Contact: 244/13
22.	248 (Rear) Ogden Avenue Block: 750 (Contact: 244/12)	Before 1873	P Dist. (ADC- 1978)	E	R <sup>1</sup>	Federal, 2 stories, 5 bays, frame, 1 main entry, rectangular plan. Wooden porch carried on turned posts is set before main entry; rectangular windows with 6/6 sash, wood sills, and shutters (excepting 1 triple window on ground story); gable roof. Part of ground story fenestration has been altered; building has been resurfaced with aluminum siding. Property listed on the 1873 map as belonging to M. Morgan.	Contact: 244/12

MAP #	ADDRESS/LOCATION : PROPERTY NAME	DATE	Signifi- cance to D/S	Condition	USE	DESCRIPTION: Style, Ext. Wall Fabric, Fenestration, Form, Roof, Major Features, Alterations, Stories, etc.	NEGATIVE FILE #
23.	251 Ogden Avenue Block: 749 (Contact: 10/15)	Before 1873	P Dist.	E	R <sup>1</sup>	Italianate, 2 story with basement, 3 bays, frame, 1 main entry, rectangular plan. GROUND STORY: Wooden porch set on posts extends across ground story; tripartite window. 2nd STORY: Rectangular windows with 1/1 sash; bracketed cornice with plain frieze. Building has been resurfaced and trim removed; ground story fenestration has been altered. Property listed on 1873 map as belonging to H. Feibel.	Contact: 10/15, 14
24.	252-260 Ogden Avenue Block: 750 (Contact: 244/11, 48/7)	Between 1873- 1887	P Dist.	E	R <sup>1</sup>	5 Italianate row houses, 2 stories, brick; each with 3 bays, 1 main entry, and rectangular plan. Each house with transom topped main entry; ornate, pediment shaped portal and window heads; tall ground story windows; stone sills; rectangular windows; decorative stone plaques below 2nd story windows; stone water table; bracketed cornices with dentils and panelled friezes. Very handsome row, with only insignificant alterations.	Contact: 244/11, 48/7

NEW JERSEY OFFICE OF CULTURAL AND ENVIRONMENTAL SERVICES  
HISTORIC PRESERVATION SECTION  
DISTRICT/STREETSCAPE CONTINUATION SHEET

N.J. HISTORIC SITES INVENTORY

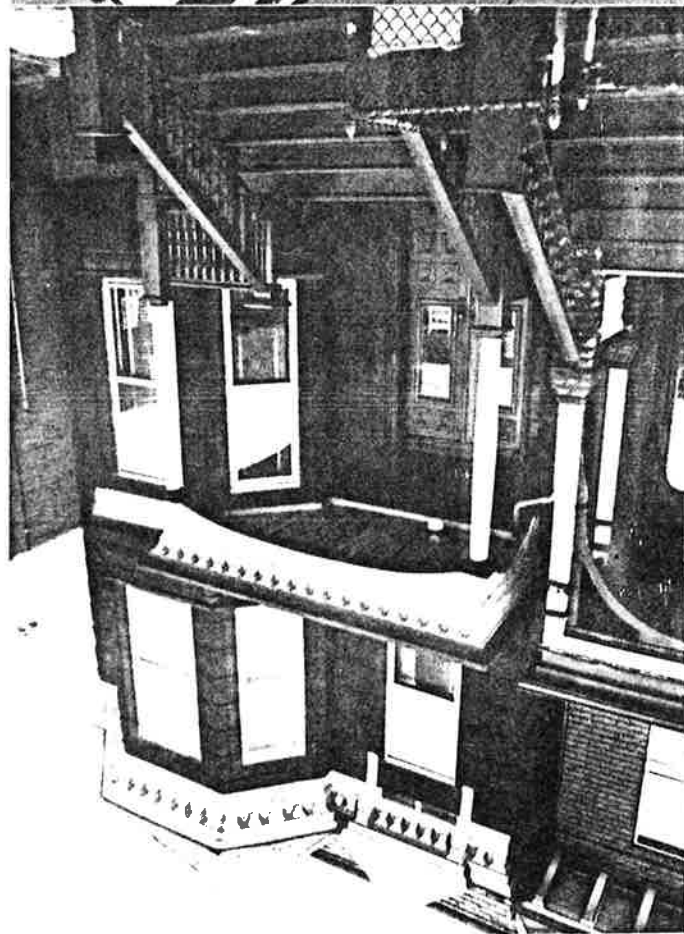
Date 8/85

District/Streetscape Continuation Page # 13. Inventory # 0906-D6 og

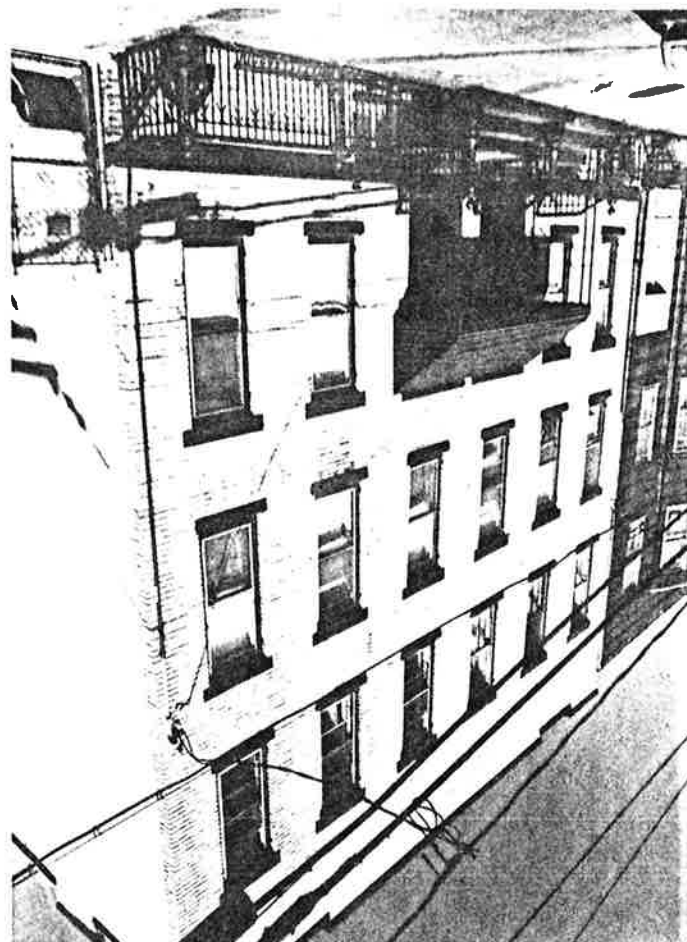
MAP #	ADDRESS/LOCATION : PROPERTY NAME	DATE	Signifi- cance to D/S	Condition	USE	DESCRIPTION: Style, Ext. Wall Fabric, Fenestration, Form, Roof, Major Features, Alterations, Stories, etc.	NEGATIVE FILE #
25.	255 Ogden Avenue Block: 749 (Contact: 10/16)	Between 1873- 1887	P Dist.	E	R <sup>1</sup>	Italianate, 2 story with basement, 3 bays, frame, 1 main entry, rectangular plan. Wood porch with bracketed cornice set on turned posts with knobs extends across ground story; main entry with transom; rectangular windows with 1/1 sash; bracketed cornice. Building has been resurfaced and trim removed; cornice probably not original.	Contact: 10/16, 18
26.	262-266 Ogden Avenue Block: 750 (Contact: 244/10)	Between 1908- 1919	P Dist.	G	R <sup>1</sup>	#262-264: Twin Georgian Revival Variant houses, 2 stories, brick, each with 1 main entry and irregular rectangular plan. Each house with porch set on piers before main entry; tripartite projecting bay extending height of building; rectangular windows with stone flat arched heads with keystone. Cornices of buildings, including gable roof end topping projecting bay of #264, are not original. #266: Italianate Variant, 2 stories, brick, 1 main entry, rectangular plan. Modern porch before entry; tripartite projecting bay extending height of building; rectangular windows with 1/1 sash, stone lintels and sills; bracketed cornice with intricately decorated frieze.	Contact: 244/10



Site No. 0906-D4 Zab  
 43 Zabonkie Street  
 Jersey City, N.J.  
 Photo Neg. No. 240/8A  
 Map No. 7  
 (bat. 1887-1896)



Site No. 0906-D4 Zab  
 64-66 Zabonkie Street  
 Jersey City, N.J.  
 Photo Neg. No. 239/9  
 Map No. 8  
 (bat. 1873-1887)



NEW JERSEY OFFICE OF CULTURAL AND ENVIRONMENTAL SERVICES  
HISTORIC PRESERVATION SECTION  
DISTRICT/STREETSCAPE CONTINUATION SHEET

N.J. HISTORIC SITES INVENTORY

Date 8/85

District/Streetscape Continuation Page # 14. Inventory # 0906-D6 og

MAP #	ADDRESS/LOCATION : PROPERTY NAME	DATE	Signifi- cance to D/S	Condition	USE	DESCRIPTION: Style, Ext. Wall Fabric, Fenestration, Form, Roof, Major Features, Alterations, Stories, etc.	NEGATIVE FILE #
27.	268-272 Ogden Avenue Block: 750 (Contact: 244/8,9)	Between 1908- 1919	P Dist.	E	R <sup>2</sup>	3 matching Italianate Variant houses, 2 stories, brick, each with 2 entries and rectangular plan. #268-270 is a double house. <u>GROUND STORY</u> : Porch with ornate frieze set on brick piers extends across entire story; each house with 2 windows set into slightly curving bay. <u>2nd STORY</u> : Each house with 3 windows with cornice heads; 2 windows set into slightly curving bay which is offset from that of ground story; bracketed cornice with dentils and swag and wreath decorated frieze. All windows rectangular with 1/1 sash and stone sills. #272 is identical to #268.	Contact: 244/8,9
28.	269-271 Ogden Avenue Block: 749 (Contact: 10/22)	Before 1873	P Dist. (# 271 HDC- 1978)	E	R <sup>2</sup>	Twin Italianate rowhouses, 3 stories, brick; each with 3 bays, 1 main entry, and rectangular plan. Entries with transom and decorative, bracketed, segmentally arched stone head with ornate keystone; rectangular windows with 1/1 sash, stone sills, and decorative, segmentally arched stone heads; stone water tables; continuous cornice. Modern metal awning obscures portal head of #269. The cornice of #269 retains its brackets; they have been removed on #271. Property listed on 1873 map as belonging to J. Appold.	Contact: 10/22

MAP #	ADDRESS/LOCATION : PROPERTY NAME	DATE	Signifi- cance to D/S	Condition	USE	DESCRIPTION: Style, Ext. Wall Fabric, Fenestration, Form, Roof, Major Features, Alterations, Stories, etc.	NEGATIVE FILE #
29.	277-279 Ogden Avenue Block: 768 (Contact: 244/6)	Between 1919- 1928	P Dist.	E	R <sup>1</sup>	Twin Decorated Brick houses, 2 stories, brick; each with 2 bays, 1 main entry, and rectangular plan. Each house with 1 double window with continuous stone sill on each story, single window with stone sill above entry, and brick and stucco parapet with end turrets and central pediment. All windows rectangular with 1/1 sash.	Contact: 244/6
30.	334-336 Ogden Avenue Block: 778 (Contact: 244/3)	Between 1919- 1928	P Dist.	E	R <sup>2</sup>	Decorated Brick, 4 stories, 6 bays, brick, 1 main entry, irregular rectangular plan with side light well court. Main entry with stone surround; double windows with continuous stone sills at end bays; stone belt course forms continuous sill for 2nd story windows; rectangular windows with 1/1 sash and stone sills; decorative brickwork and stone accents; brick parapet, battlemented over end bays.	Contact: 244/3

MAP #	ADDRESS/LOCATION : PROPERTY NAME	DATE	Signifi- cance to D/S	Condition	USE	DESCRIPTION: Style, Ext. Wall Fabric, Fenestration, Form, Roof, Major Features, Alterations, Stories, etc.	NEGATIVE FILE #
31.	338-340 Ogden Avenue Block: 778 (Contact: 244/1)	Between 1873- 1887	P Dist. (# 338 HDC- 1978)	G/ E	R <sup>2</sup>	Double Italianate house, 2 stories, frame, 2 main entries, rectangular plan with rear extension. Wood porch with bracketed cornice set on posts extends across the entries; 2 rectangular projecting bays rise to top of 2nd story; bracketed cornice of porch continuous across ground story of bays; 2nd story of bays also topped by matching bracketed cornice; single window over entries; all windows rectangular with 1/1 sash; bracketed cornice.	Contact: 244/1, 48/2
32.	339-341 Ogden Avenue Block: 777 (Contact: 244/2)	Between 1887- 1896	P Dist. (# 341 HDC- 1978)	G	R <sup>2</sup>	#339: Queen Anne vernacular, 2 stories, frame, 1 main entry, rectangular plan. Bracketed, gable roofed porch set on brick piers before main entry; 2 tripartite projecting bays rise height of building; bays topped by bracketed gable roof ends; rectangular windows with 1/1 sash; gable roof ends set into gabled pent roof. #341: Queen Anne vernacular, 2 stories, frame, 1 main entry, rectangular plan with rear extension. Gable roofed porch with dentils set on brick piers before main entry; tripartite projecting bay rises height of building; bay topped by gable roof end; rectangular windows with 1/1 sash; gable roof end set into bracketed pent roof.	Contact: 244/2

MAP #	ADDRESS/LOCATION : PROPERTY NAME	DATE	Signifi- cance to D/S	Condition	USE	DESCRIPTION: Style, Ext. Wall Fabric, Fenestration, Form, Roof, Major Features, Alterations, Stories, etc.	NEGATIVE FILE #
33.	348 Ogden Avenue Block: 778 (Contact: 243/35A)	Before 1873	P Dist.	E	R <sup>2</sup>	Italianate, 3 stories, 3 bays, frame, 1 main entry, rectangular plan with side extension. One story vestibule with bracketed cornice, entry with compound round arched head, old panelled door, and windows with round arched heads; rectangular windows with wood enframements and bracketed sills; bracketed cornice with decorated frieze. Building has been resurfaced; although cornice window heads (still visible on 3rd story) appear to have remained intact, they have been covered over.	Contact: 243/35A, 33A; 48/3
34.	355 Ogden Avenue Block: 777 (Contact: 243/32A)	Between 1896- 1908	P Dist.	E	R <sup>2</sup>	Renaissance Revival Variant, 3 stories, brick, 1 main entry, rectangular plan. Metal, tripartite projecting bay rises height of building; middle window on ground and 3rd story of bay with pedimented head, cornice heads on remaining windows on same stories; decorative panelling below windows of bay; single windows with pedimented heads and stone sills above entry; decorative brickwork panels below single windows; all windows rectangular with 1/1 sash; bracketed cornice. Probably originally had a porch before entry, as repair can be seen above modern metal awning.	Contact: 243/32A

NEW JERSEY OFFICE OF CULTURAL AND ENVIRONMENTAL SERVICES  
HISTORIC PRESERVATION SECTION  
DISTRICT/STREETSCAPE CONTINUATION SHEET

N.J. HISTORIC SITES INVENTORY

Date 8/85District/Streetscape Continuation Page # 18. Inventory # 0906-D6 og

MAP #	ADDRESS/LOCATION : PROPERTY NAME	DATE	Signifi- cance to D/S	Condition	USE	DESCRIPTION: Style, Ext. Wall Fabric, Fenestration, Form, Roof, Major Features, Alterations, Stories, etc.	NEGATIVE FILE #
35.	361-365 Ogden Avenue Block: 777 (Contact: 243/31A)	Between 1919- 1928	P Dist.	G	R <sup>1</sup>	3 matching Decorated Brick residences, 2 stories, brick, each with 1 main entry and irregular rectangular plan. Each house with porch set on brick piers (that of #365 glassed in) before main entry, rectangular projecting bay rising height of building, tripartite window on each story of bay; single window over entry, and parapet of dark colored brick.	Contact: 243/31A
36.	374-380 Ogden Avenue Block: 778 (Contact: 243/29A, 30A) (Complete photo not available)	Between 1908- 1919	P Dist.	G	R <sup>1</sup>	4 matching Italianate Variant houses, 2 stories, brick, each with 2 entries and rectangular plan. #376-378 is a double house. <u>GROUND STORY</u> : Porch with ornate frieze set on brick piers extends across entire story; each house with 2 windows set into slightly curving bay. <u>2nd STORY</u> : Each house with 3 windows with cornice heads; 2 windows set into slightly curving bay which is offset from that of ground story; bracketed cornice with dentils and swag and wreath decorated frieze. All windows rectangular with 1/1 sash and stone sills. #374 is identical to #378 and #380 is identical to #376. The frieze of #374 has been replaced by modern siding. Except for bottom of porches, these buildings are identical to #268-272 Ogden Ave. (See Map #27).	Contact: 243/29A, 30A.

MAP #	ADDRESS/LOCATION : PROPERTY NAME	DATE	Signifi- cance to D/S	Condition	USE	DESCRIPTION: Style, Ext. Wall Fabric, Fenestration, Form, Roof, Major Features, Alterations, Stories, etc.	NEGATIVE FILE #
37.	382-384 Ogden Avenue Block: 778 (Contact: 243/27A)	Between 1919- 1928	P Dist.	E	R1	2 matching Decorated Brick houses, 2 stories, brick; each with 3 bays, 1 main entry, and rectangular plan with side light wells. Each house with elliptical arched portal and window heads, rectangular windows with stone sills, and decorative brickwork band topped by battlemented brick parapet. #384 has double windows; the tympanums of the arches have been filled in with siding. The window areas of #382 have been bricked in and reduced to window size. <i>single</i>	Contact: 243/27A
38.	383 Ogden Avenue Block: 777 (Contact: 243/28A)	Before 1873	P Dist.	E	R2	Italianate, 3 stories with basement, 3 bays, brick, 1 main entry, rectangular plan. Stone cornice window and portal heads; rectangular windows with 1/1 sash and bracketed stone sills; stone water table; bracketed cornice with dentils and ornate swag decorated frieze. Listed on the 1873 map and in the 1872-73 Directory as the home of Thomas Flynn, who was in the clothing business. House is intact with only insignificant alterations.	Contact: 243/28A

MAP #	ADDRESS/LOCATION : PROPERTY NAME	DATE	Signif- cance to D/S	Condition	USE	DESCRIPTION: Style, Ext. Wall Fabric, Fenestration, Form, Roof, Major Features, Alterations, Stories, etc.	NEGATIVE FILE #
39.	395 Ogden Avenue Block: 777 (Contact: 243/26A)	Between 1887- 1896	P Dist.	G/ E	R <sup>1</sup>	Italianate Variant, 2 story with basement, brick, 1 main entry, rectangular plan. Main entry with transom and ornate scalloped head with decorated frieze; tripartite projecting bay rises height of building; rectangular windows with 1/1 sash, cornice heads, and stone sills; stone water table; recessed panels beneath windows of bay; continuous bracketed cornice with dentils and decorated panelled frieze. House is intact with only insignificant alterations.	contact: 243/26A
40.	408 Ogden Avenue Block: 789 (Contact: 243/25A)	Between 1896- 1908	P Dist.	E	R <sup>1</sup>	Italianate, 2½ stories with basement, 3 bays, frame, 1 main entry, rectangular plan. Enclosed porch with bracketed cornice extends across ground story; 2nd story windows rectangular with 1/1 sash, cornice heads, and wood enframements; cornice with paired brackets and plain frieze topped by gable roofed dormer projecting above roof line. Building has been resurfaced.	Contact: 243/25A



NEW JERSEY OFFICE OF CULTURAL AND ENVIRONMENTAL SERVICES  
HISTORIC PRESERVATION SECTION  
DISTRICT/STREETSCAPE CONTINUATION SHEET

N.J. HISTORIC SITES INVENTORY

Date: 8/85

District/Streetscape Continuation Page # 21.

Inventory # 0906-D6 og

MAP #	ADDRESS/LOCATION : PROPERTY NAME	DATE	Signifi- cance to D/S	Condition	USE	DESCRIPTION: Style, Ext. Wall Fabric, Fenestration, Form, Roof, Major Features, Alterations, Stories, etc.	NEGATIVE FILE #
41.	409 Ogden Avenue Block: 787 (Contact: 243/24A, 48/5)	Between 1887- 1896	P Dist.	E	R <sup>1</sup>	Greek Revival, 2½ stories with basement, 3 bays, frame, 1 main entry, rectangular plan. Wooden porch with bracketed cornice set on turned posts with knobs extends across ground story; main entry topped by transom and flanked by fluted pilasters; rectangular windows with 1/1 sash and wood enframements; gable roof with gable facing street.	Contact: 243/24A; 48/5,6
42.	416 Ogden Avenue Block: 789 (Contact: 243/23A)	Before 1873	P Dist.	G	R <sup>1</sup>	Greek Revival, 2½ stories, 3 bays, frame, 1 main entry, rectangular plan with rear extension. Enclosed porch with cornice and plain frieze extends across ground story; 2nd story windows rectangular with 1/1 sash, cornice heads, and wood enframement; gable roof with gable facing street. ½ story window has been altered. Property listed on the 1873 map as belonging to G. Westervelt.	Contact: 243/23A
43.	445 Ogden Avenue Block: 788 (contact: 243/22A)	Between 1908- 1919	P Dist.	G	R <sup>2</sup>	Italianate Variant, 4 stories with basement, brick, 1 main entry, irregular rectangular plan. Portico set on brick piers before main entry; 2 tripartite projecting bays rise height of building; rectangular windows with 1/1 sash, stone lintels and sills; stone water table; building terminates in fluted brick band topped by stuccoed-over parapet. Cornice has been removed and area stuccoed over.	Contact: 243/22A

Ogden Avenue in Washington Village Neighborhood  
of Survey Area (ward 26) NTHSI # 0906-D6 og,  
Jersey City, Hudson Co.  
Page 1 of 25 photo pages.

Site No. 0906-D6 og  
102-104 Ogden Avenue  
Jersey City, N.J.  
Photo Neg. No. 244/29  
Map No. 1  
(bet. 1908-1919)



Ogden Avenue in Washington Village Neighborhood  
of Survey Area (ward D6) N5H5I # 0906-D6 og,  
Jersey City, Hudson Co.  
Page 2 of 25 photo pages.



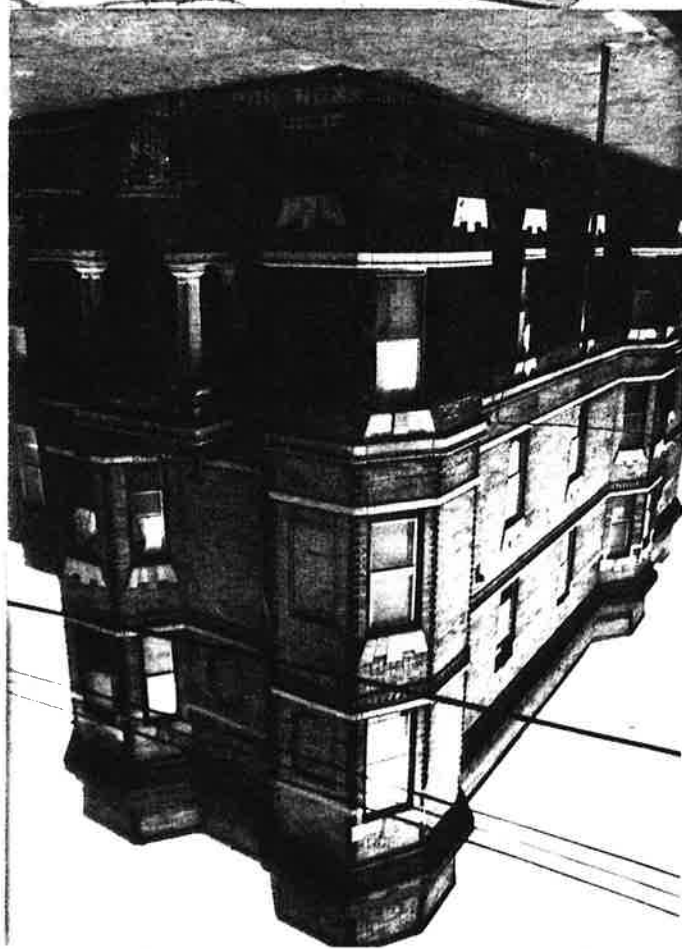
Site No. 0906-D6 og  
108-110 Ogden Ave.  
Jersey City, N.J.  
Photo Neg. No. 244/28  
Map No. 2  
(bet. 1896-1908)

110 Ogden Avenue  
Photo Neg. No. 244/30  
Map No. 2 (Detail)

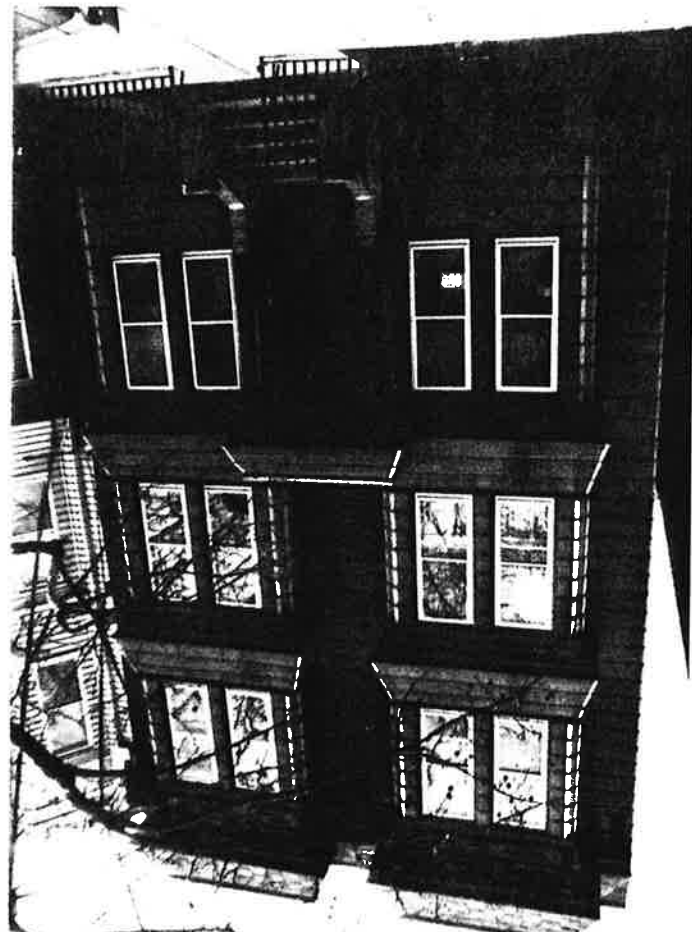


Opden Avenue in Washington Village Neighborhood  
 of Survey Area (ward DC) N5H5I # 0906-D6081  
 Jersey City, Hudson Co.

Page 3 of 25 photo pages.



Site No. 0906-D608  
 117 Opden Avenue  
 Jersey City, N.J.  
 Photo Neg. No. 244/27  
 Map No. 3  
 (bet. 1896-1908)



Site No. 0906-D609  
 120 Opden Avenue  
 Jersey City, N.J.  
 Photo Neg. No. 244/26  
 Map No. 4  
 (bet. 1887-1896)

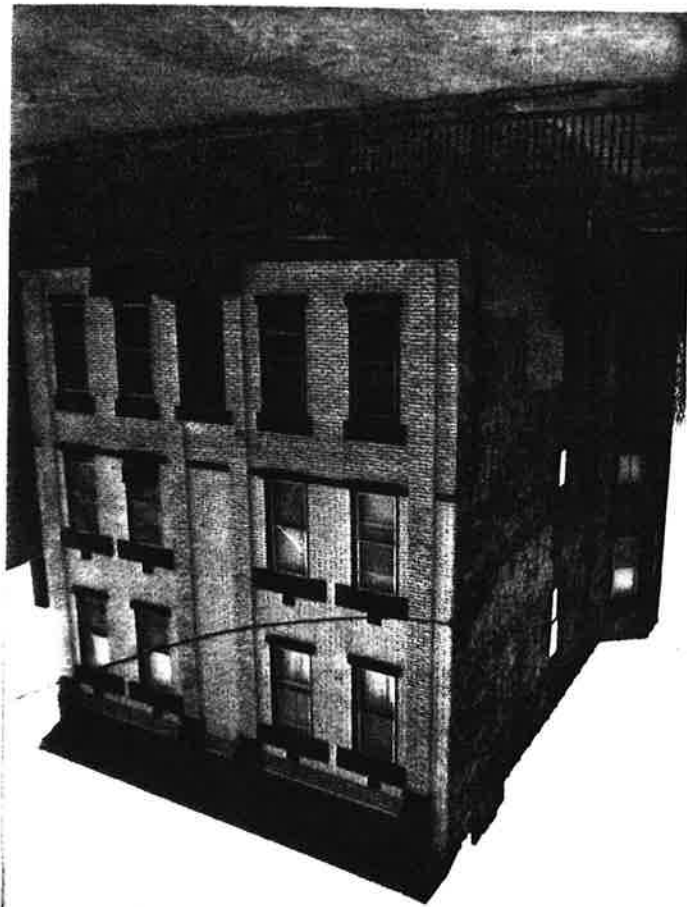
Ogden Avenue in Washington Village Neighborhood  
 of Survey Area (ward D6) NORTH # 0906 - D609,  
 Jersey City, Hudson Co.

Page H of 25 photo pages.



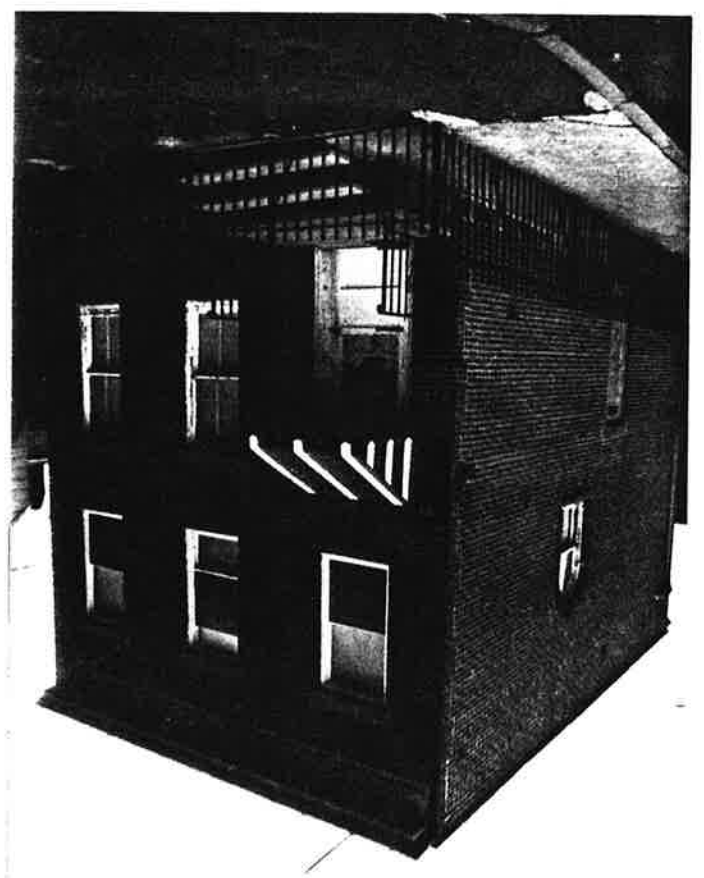
Site No. 0906 - D609  
 121 Ogden Avenue  
 Jersey City, N.J.  
 Photo Neg. No. 244/25  
 Map No. 5  
 (bet. 1908-1919)

Site No. 0906 - D609  
 140 Ogden Avenue  
 Jersey City, N.J.  
 Photo Neg. No. 244/24  
 Map No. 6  
 (bet. 1896-1908)

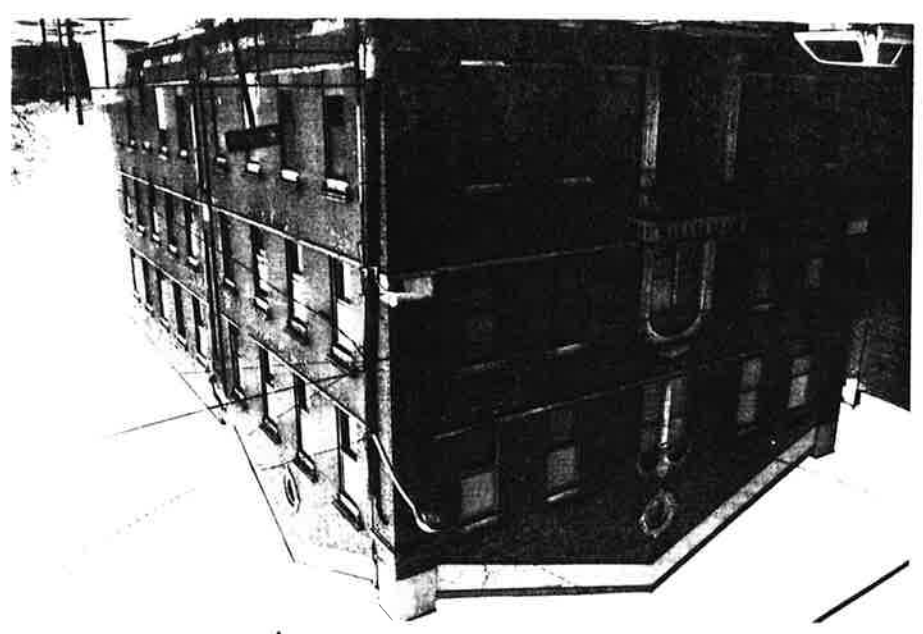


Ogden Avenue in Washington Village Neighborhood  
of Survey Area (ward De) N5HST # 0906-D6 og,  
Jersey City, Hudson Co.  
Page 5 of 25 photo pages.

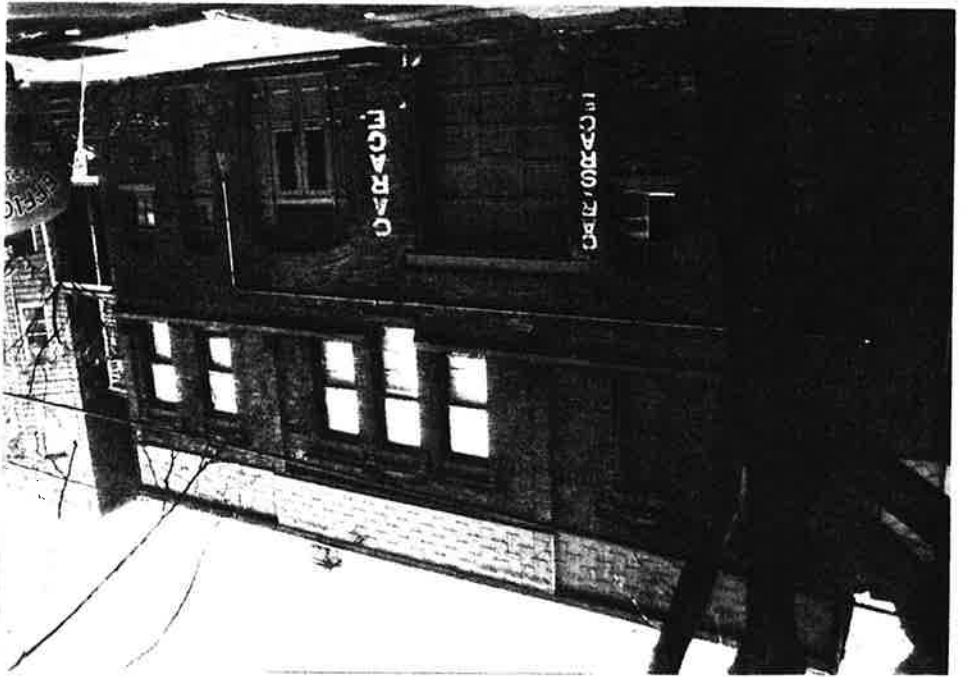
Site No. 0906-D6 og  
153 Ogden Avenue  
Jersey City, N.J.  
Photo Neg. No. 244/23  
Map No. 7  
(before 1873)



Site No. 0906-D6 og  
154 Ogden Avenue  
Jersey City, N.J.  
Photo Neg. No. 185/21  
Map No. 8  
(bet. 1873-1887)



Ogden Avenue in Washington Village Neighborhood  
 of Survey Area (ward D6) NJHSE # 0906 - D6 og,  
 Jersey City, Hudson Co.  
 Page 6 of 25 photo pages.



Site No. 0906 - D6 og  
 163-165 Ogden Ave.  
 Jersey City, N.J.  
 Photo Neg. No. 244/21  
 Map No. 9  
 (bat. 1887-1896)



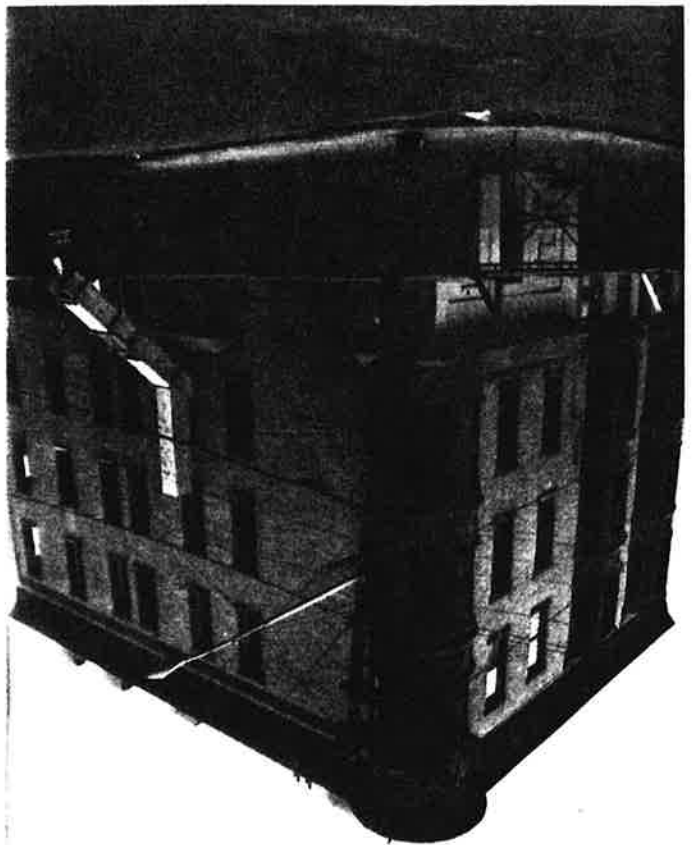
Site No. 0906 - D6 og  
 164 Ogden Avenue  
 Belvedere Apartments  
 Jersey City, N.J.  
 Photo Neg. No. 244/22  
 Map No. 10  
 (bat. 1919-1928)



Ogden Avenue in Washington Village Neighborhood  
of Survey Area (ward D6) KTHSI # 0906-D6 09,  
Jersey City, Hudson Co.  
Page 7 of 25 photo pages.



Site No. 0906-D6 09  
168-176 Ogden Ave.  
Jersey City, N.J.  
Photo Neg. No. 244/20  
Map No. 11  
(bet. 1919-1928)



Site No. 0906-D6 09  
193-195 Ogden Avenue  
Jersey City, N.J.  
Photo Neg. No. 244/19  
Map No. 12  
(bet. 1896-1908)



Ogden Avenue in Washington Village Neighborhood  
of Survey Area (ward D6) NTH SI # 0906-D6 og,  
Jersey City, Hudson Co.  
Page 8 of 25 photo pages.

Site No. 0906-D6 og  
203 Ogden Avenue  
Jersey City, N.J.  
Photo Neg. No. 10/2  
Map No. 13  
(bat. 1908-1919)

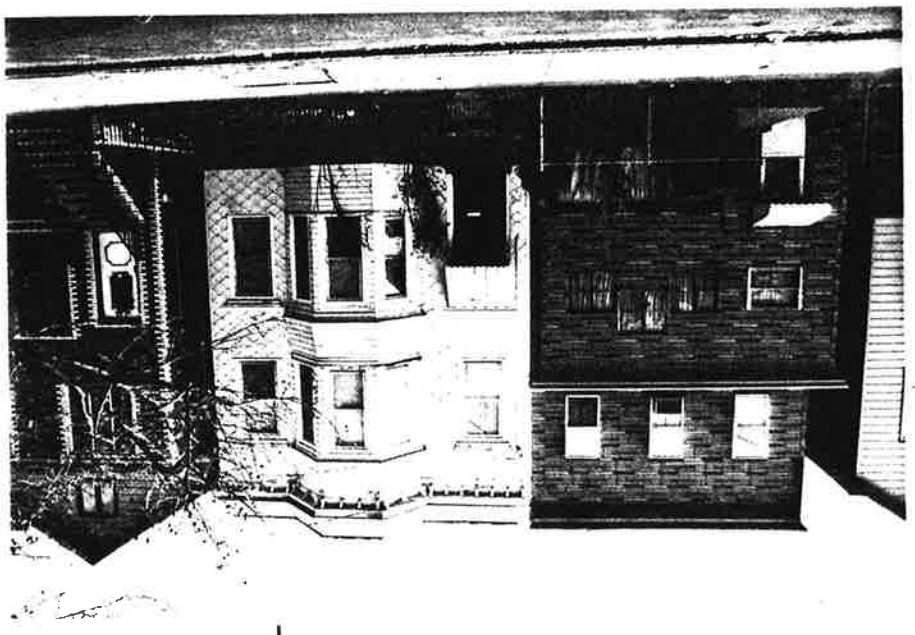


Site No. 0906-D6 og  
207 Ogden Avenue  
Jersey City, N.J.  
Photo Neg. No. 10/3  
Map No. 14  
(bat. 1908-1919)



Ogden Avenue in Washington Village Neighborhood  
 of Jersey Area (Ward D6) NJHSI #0906-D6 og,  
 Jersey City, Hudson Co.  
 Page 9 of 25 photo pages.

Site No. 0906-D6 og  
 223 Ogden Avenue  
 Jersey City, N.J.  
 Photo Neg. No. 10/17  
 Map No. 15  
 (bat. 1887-1896)



Site No. 0906-D6 og  
 224 Ogden Avenue  
 Jersey City, N.J.  
 Photo Neg. No. 244/17  
 Map No. 16  
 (after 1928)

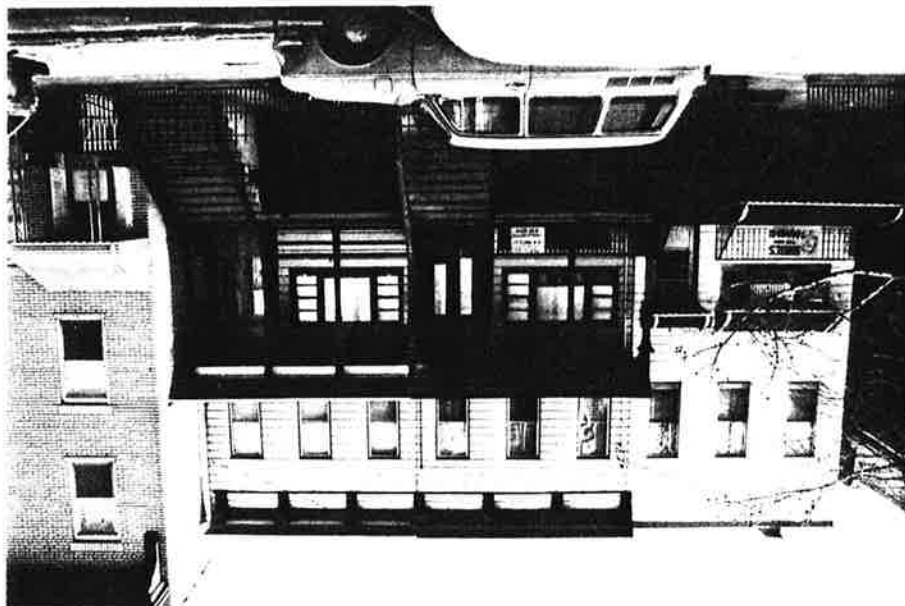


Ogden Avenue in Washington Village Neighborhood  
 of Survey Area (ward D6) N.J.H.S.I # 0906-D6 og,  
 Jersey City, Hudson Co.  
 Page 10 of 25 photo pages.

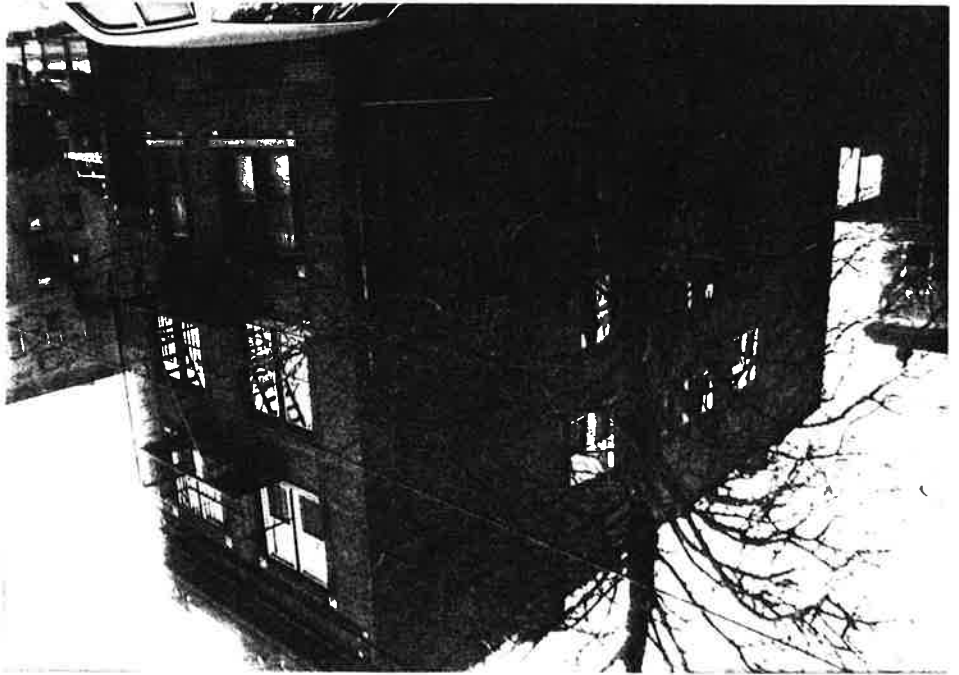
Site No. 0906-D6 og  
 226-228 Ogden Avenue  
 Jersey City, N.J.  
 Photo Neg. No. 244/16  
 Map No. 17  
 (bet. 1908-1919)



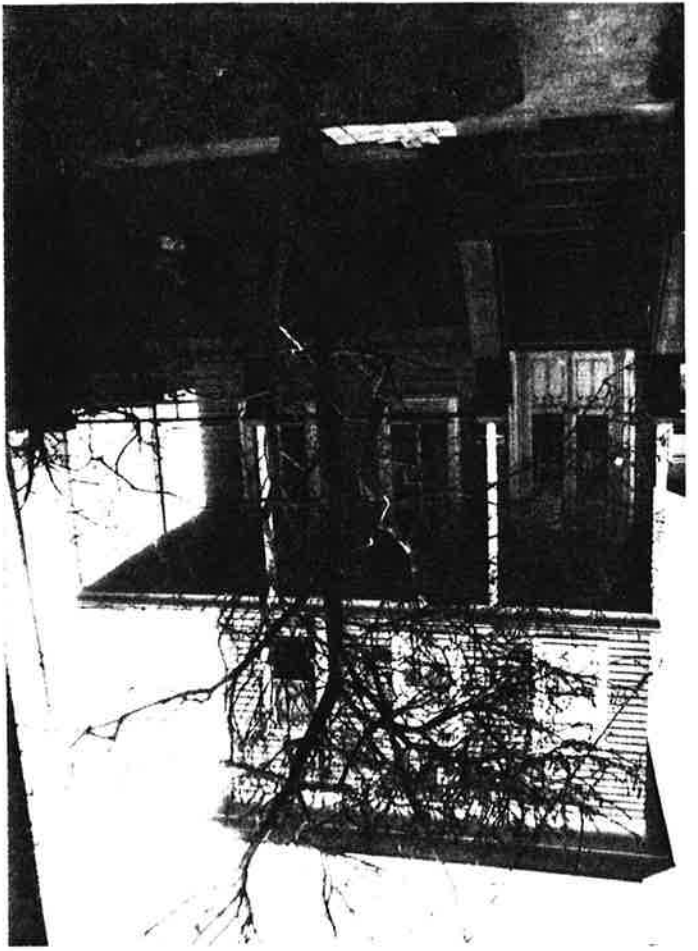
Site No. 0906-D6 og  
 229-231 Ogden Ave.  
 Jersey City, N.J.  
 Photo Neg. No. 10/9  
 Map No. 18  
 (bet. 1873-1887)



Egden Avenue in Washington Village Neighborhood  
of Survey Area (ward D6) NTHSI # 0906-D6 og,  
 Jersey City, Hudson Co.  
 Page II of 25 photo pages.

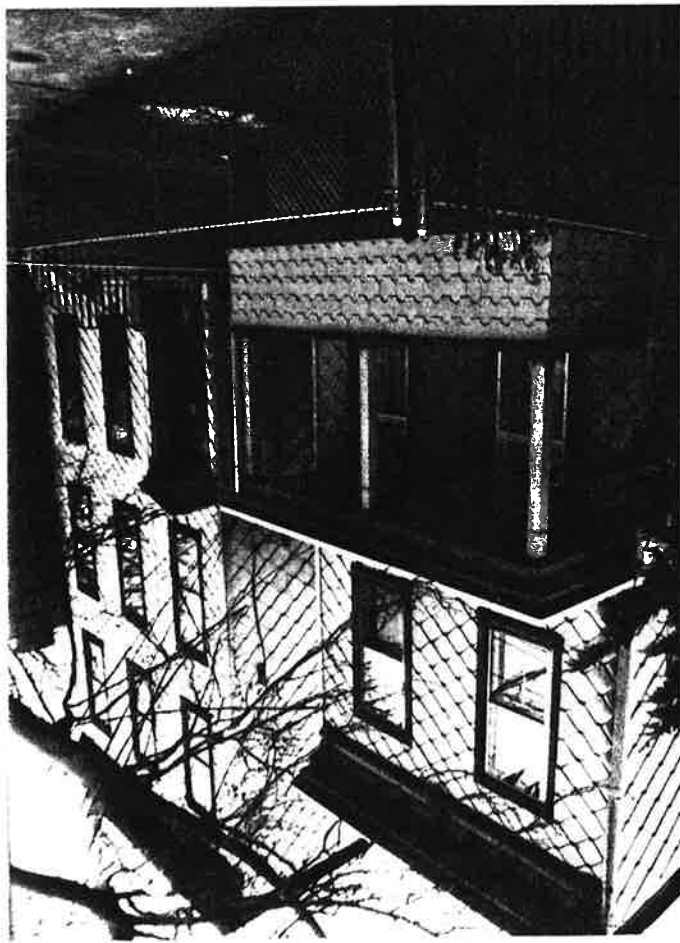


Site No. 0906-D6 og  
 238 Egden Avenue  
 Jersey City, N.J.  
 Photo Neg. No. 244/15  
 Map No. 19  
 (bat. 1919-1928)

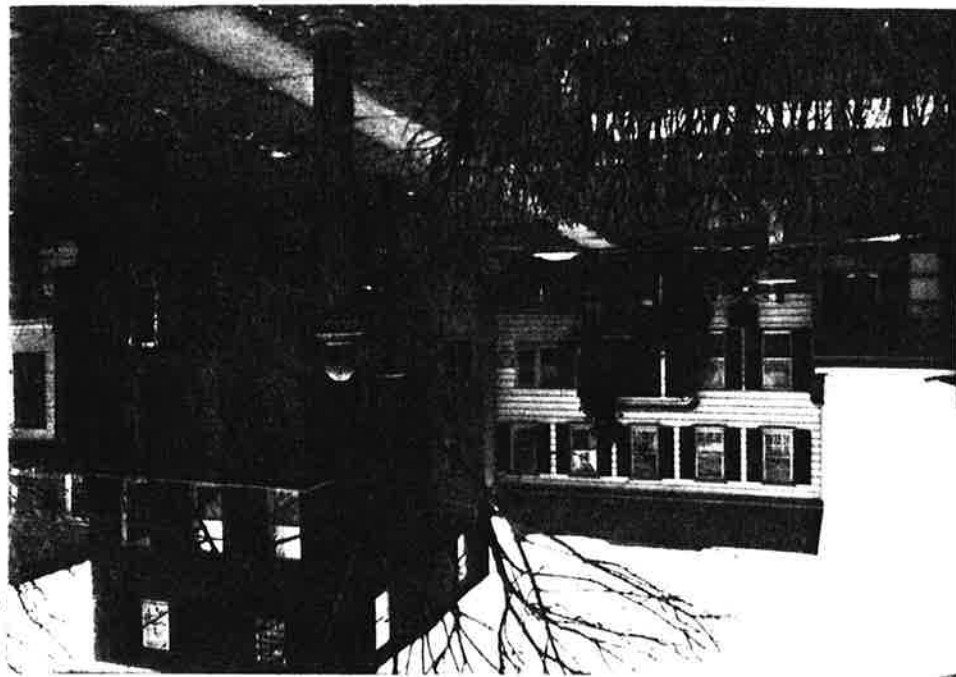


Site No. 0906-D6 og  
 240 Egden Avenue  
 Jersey City, N.J.  
 Photo Neg. No. 244/14  
 Map No. 20  
 (bat. 1873)

Ogden Avenue in Washington Village Neighborhood  
 of Survey Area (ward D6) N5H5I # 0906-D6 og,  
 Jersey City, Hudson Co.  
 Page 12 of 25 photo pages.

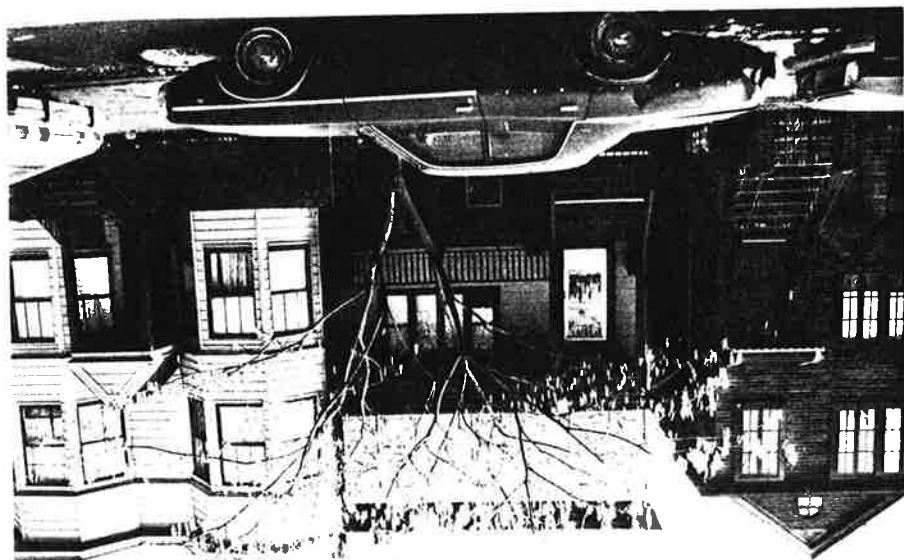


Site No. 0906-D6 og  
 242-244 (Front) Ogden Ave.  
 Jersey City, N.J.  
 Photo Neg. No. 244/13  
 Map No. 21  
 (bet. 1873-1887)



Site No. 0906-D6 og  
 248 (Rear) Ogden Ave.  
 Jersey City, N.J.  
 Photo Neg. No. 244/12  
 Map No. 22  
 (before 1873)

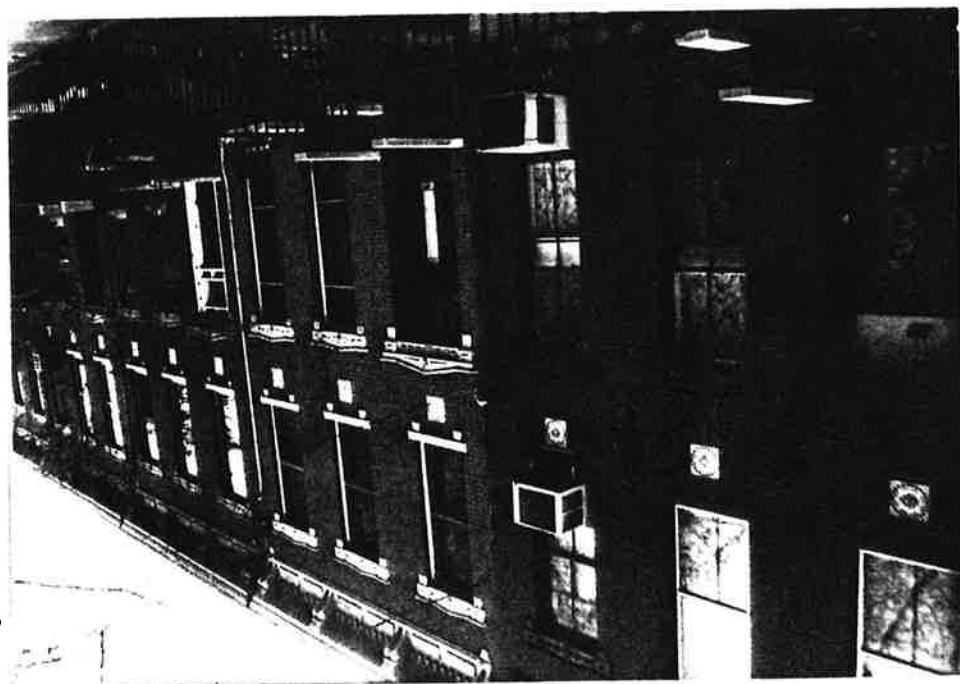
Ogden Avenue in Washington Village Neighborhood  
 of Survey Area (ward D6) NJ HSE # 0906 - D6 091  
 Jersey City, Hudson Co.  
 Page 13 of 25 photo pages.



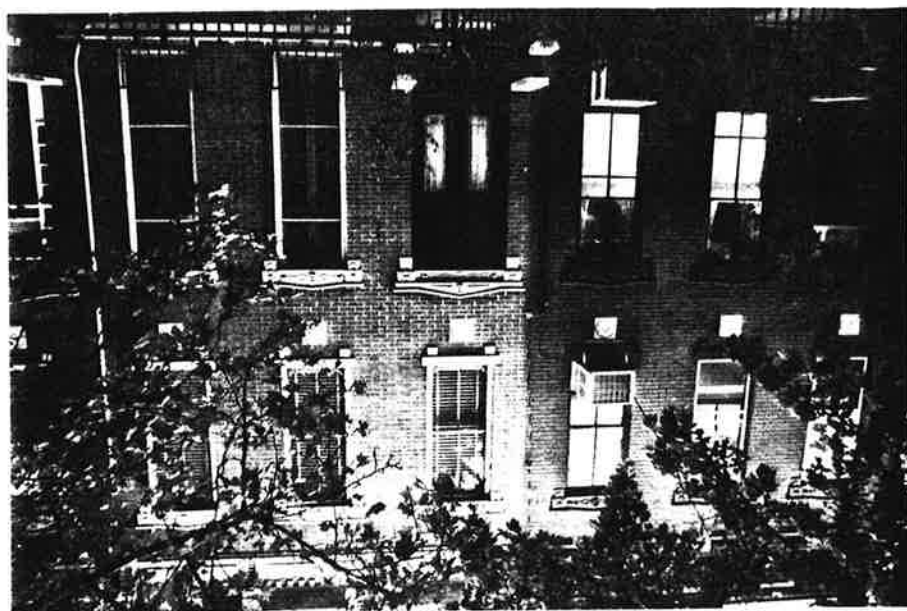
Site No. 0906 - D6 091  
 251 Ogden Avenue  
 Jersey City, N.J.  
 Photo Neg. No. 10/15  
 Map No. 23  
 (before 1873)



Ogden Avenue in Washington Village Neighborhood  
of Survey Area (Ward D6) N5H SI # 0906 - D6 09,  
Jewey City, Hudson Co.  
Page 14 of 25 photo pages.



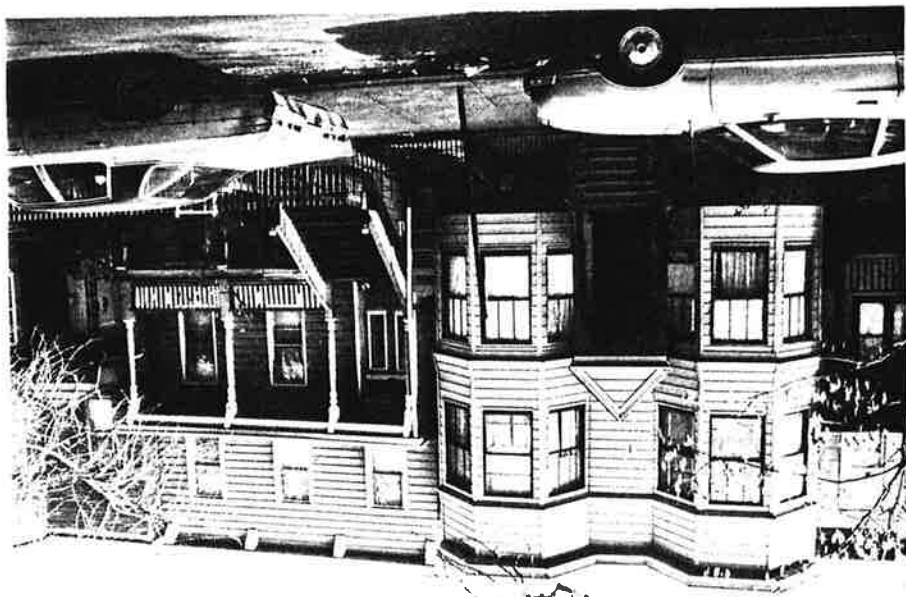
Site No. 0906 - D6 09  
252-260 Ogden Ave.  
Jewey City, N.J.  
Photo Neg. No. 244/11  
Map No. 24  
(het. 1873-1887)



258 Ogden Avenue  
Photo Neg. No. 48/7  
Map No. 24 (Detail)

Ogden Avenue in Washington  
of Survey Area (ward D6) NTHSI # 0906-D6 og.  
 Jersey City, Hudson Co.  
 Page 15 of 25 photo pages.

Site No. 0906-D6 og  
 255 Ogden Ave.  
 Jersey City, N.J.  
 Photo Neg. No. 10/16  
 Map No. 25  
 (bat. 1873-1887)



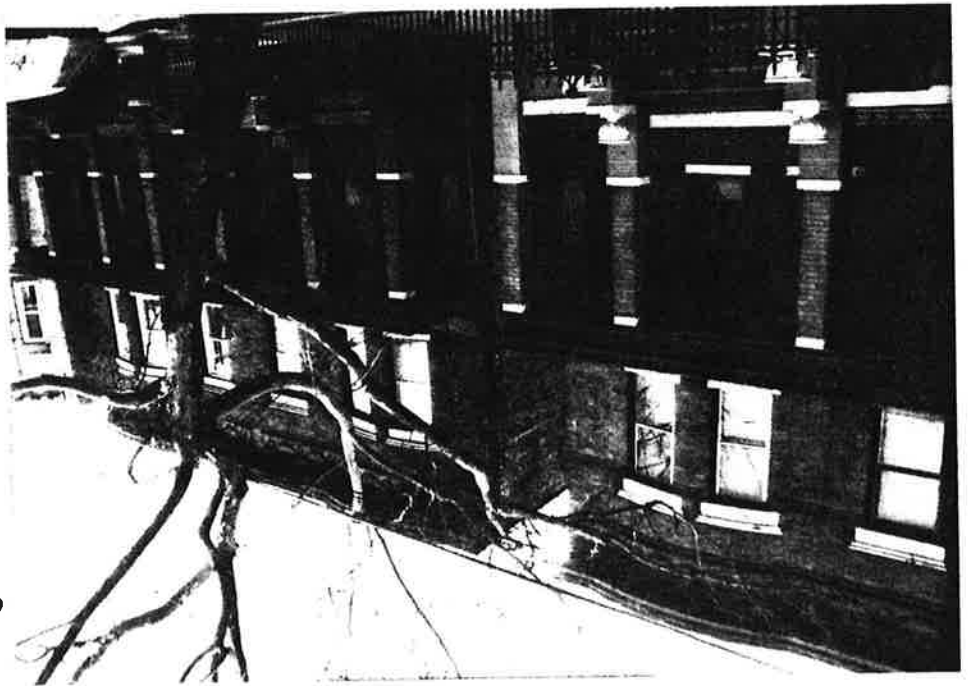
Site No. 0906-D6 og  
 262-266 Ogden Ave.  
 Jersey City, N.J.  
 Photo Neg. No. 244/10  
 Map No. 26  
 (bat. 1908-1919)



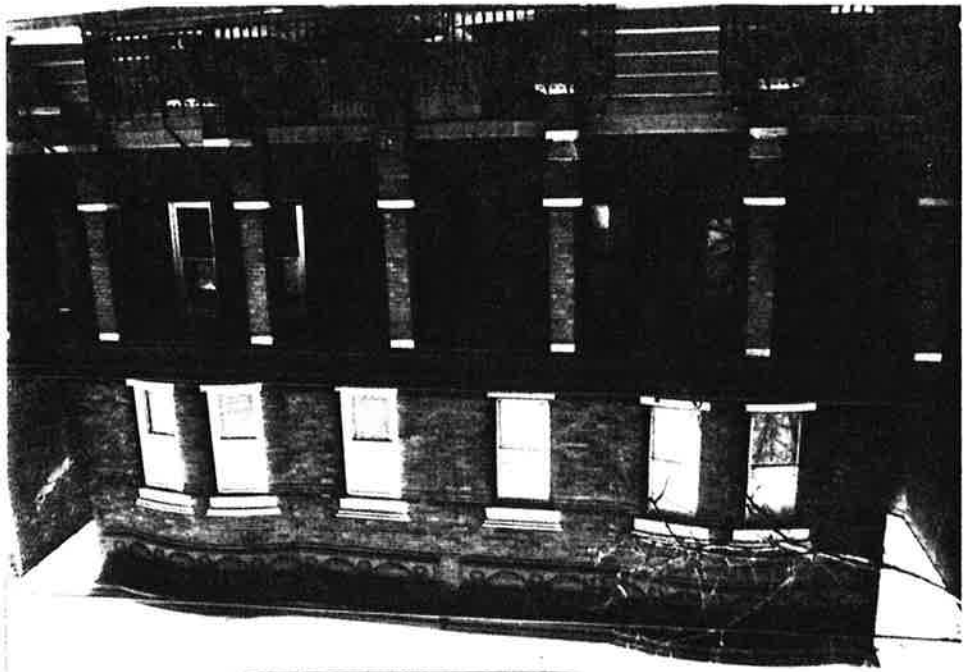


Eden Avenue in Washington Village Neighborhood  
of Survey Area (ward D6) N5H5I # 0906 - D6 09,  
Jewey City, Hudson Co.  
Page 16 of 25 photo pages.

Site No. 0906 - D6 09  
268 - 272 Eden Ave.  
Jewey City, N.J.  
Photo Neg. No. 244/8  
Map No. 27  
(hat. 1908-1919)



268 - 270 Eden Ave.  
Photo Neg. No. 244/9  
Map No. 27 (Detail)

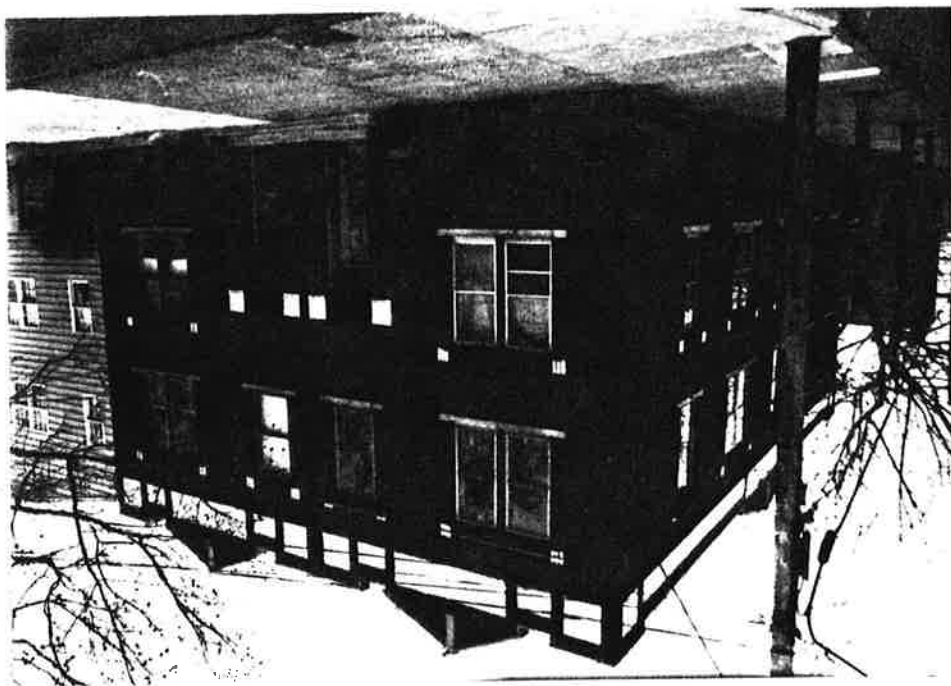


Ogden Avenue in Washington Village Neighborhood  
 of Survey Area (ward D6) N5H5I # 0906 - D6 og,  
 Jersey City, Hudson Co.  
 Page 17 of 25 photo pages.

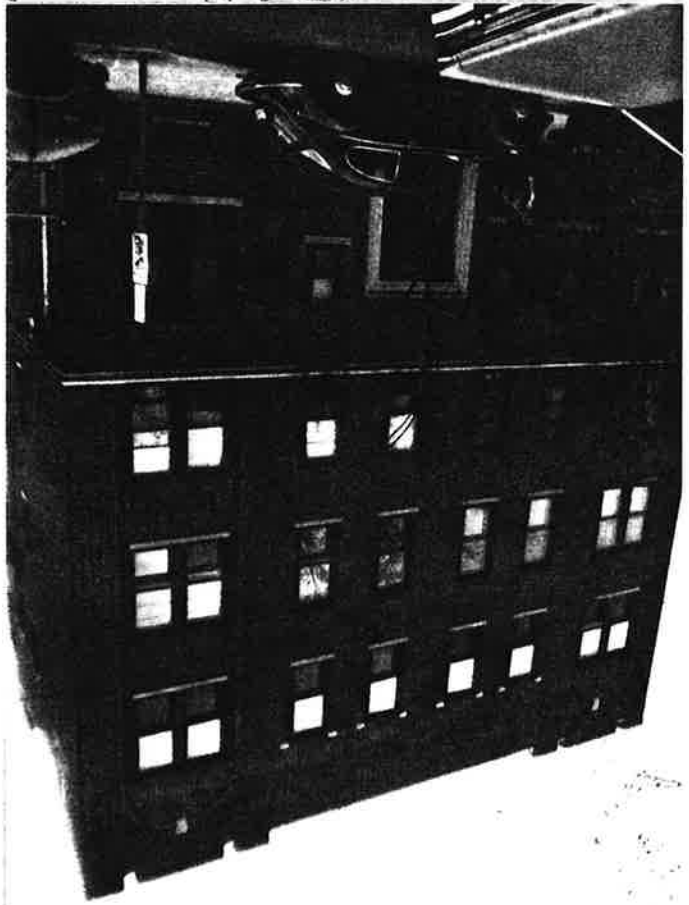
Site No. 0906 - D6 og  
 269-271 Ogden Ave.  
 Jersey City, N.J.  
 Photo Neg. No. 10/22  
 Map No. 28  
 (before 1873)



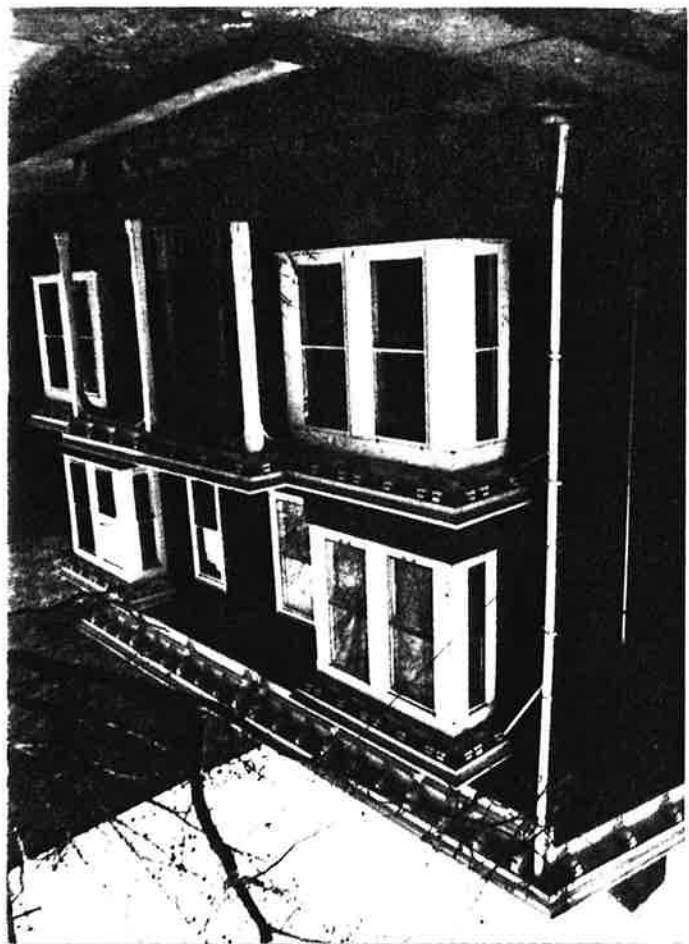
Site No. 0906 - D6 og  
 277-279 Ogden Ave.  
 Jersey City, N.J.  
 Photo Neg. No. 244/6  
 Map No. 29  
 (bet. 1919-1928)



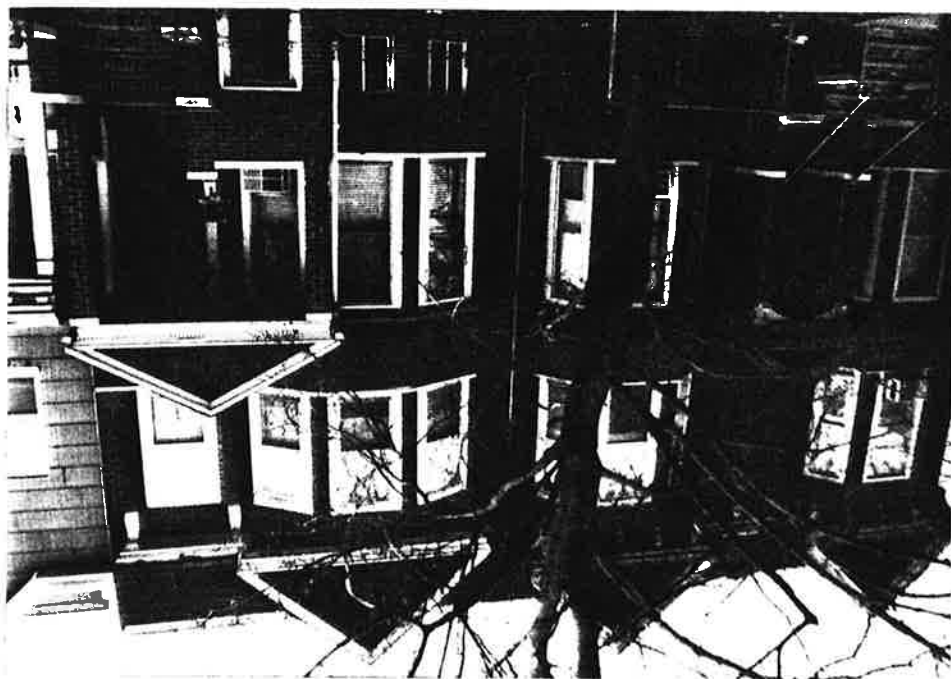
Site No. 0906 - D6 og  
 334 - 336 Ogden Avenue  
 Jersey City, N.J.  
 Photo Neg. No. 244/3  
 Map No. 30  
 (bet. 1919 - 1928)



Site No. 0906 - D6 og  
 338 - 340 Ogden Avenue  
 Jersey City, N.J.  
 Photo Neg. No. 244/1  
 Map No. 31  
 (bet. 1873 - 1887)



Ogden Avenue in Washington Village Neighborhood  
 of Survey Area (ward D6) N5HSI# 0906-D6091  
 Jersey City, Hudson Co.  
 Page 19 of 25 photo pages.



Site No. 0906-D609  
 339-341 Ogden Ave.  
 Jersey City, N.J.  
 Photo Neg. No. 244/2  
 Map No. 32  
 (bat. 1887-1896)

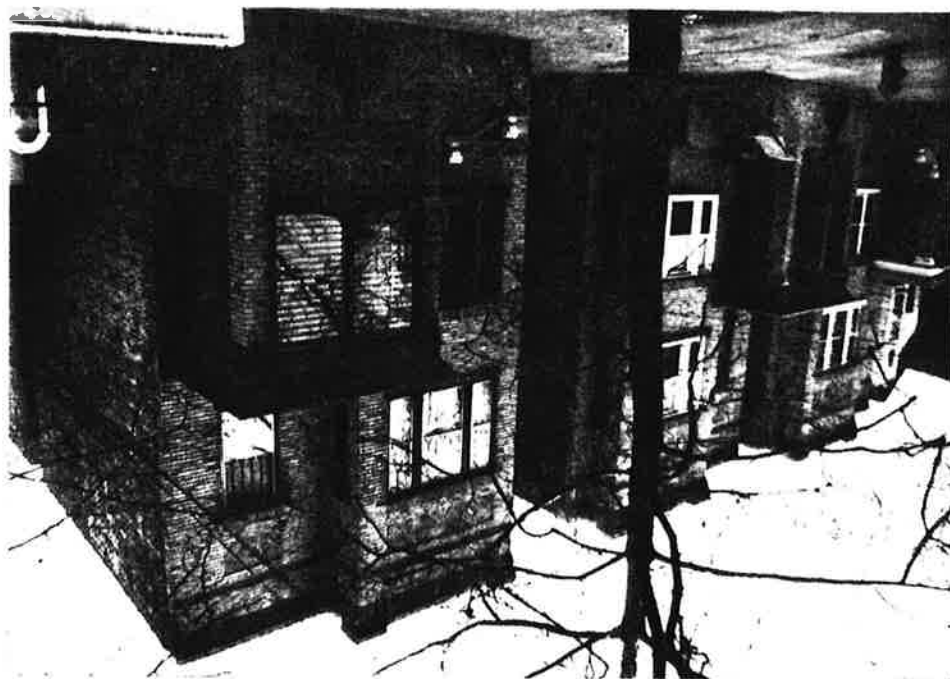
Site No. 0906-D609  
 348 Ogden Avenue  
 Jersey City, N.J.  
 Photo Neg. No. 243/35A  
 Map No. 33  
 (before 1873)



Ogden Avenue in Washington Village Neighborhood  
 of Survey Area (Ward D6) NJH SI #0906-D609,  
 Jersey City, Hudson Co.  
 Page 20 of 25 photo pages.

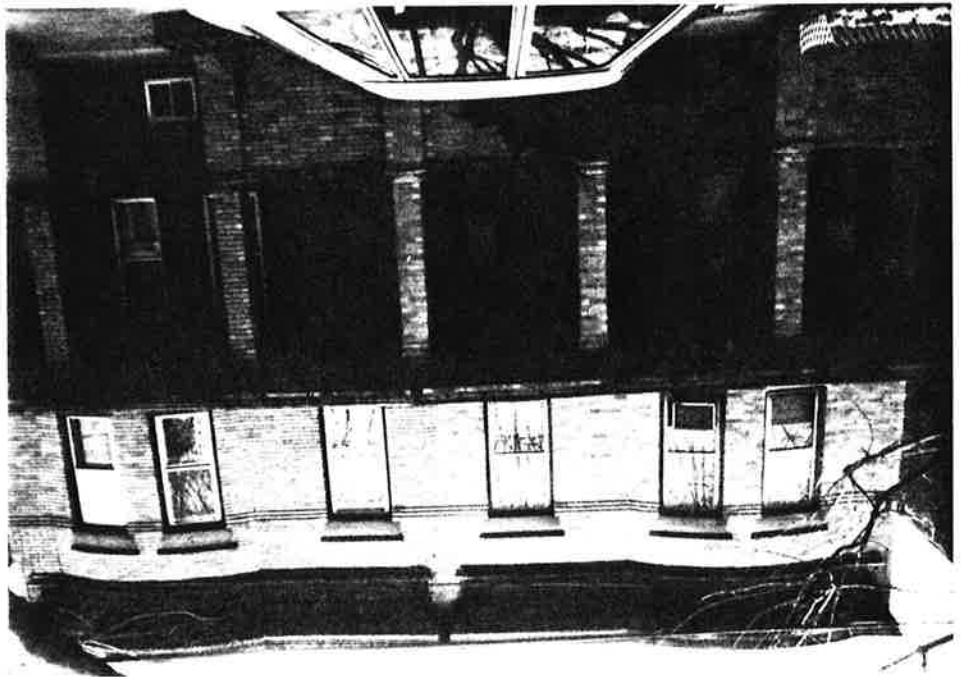


Site No. 0906-D609  
 355 Ogden Avenue  
 Jersey City, N.J.  
 Photo Neg. No. 243/32A  
 Map No. 34  
 (bat. 1896-1908)



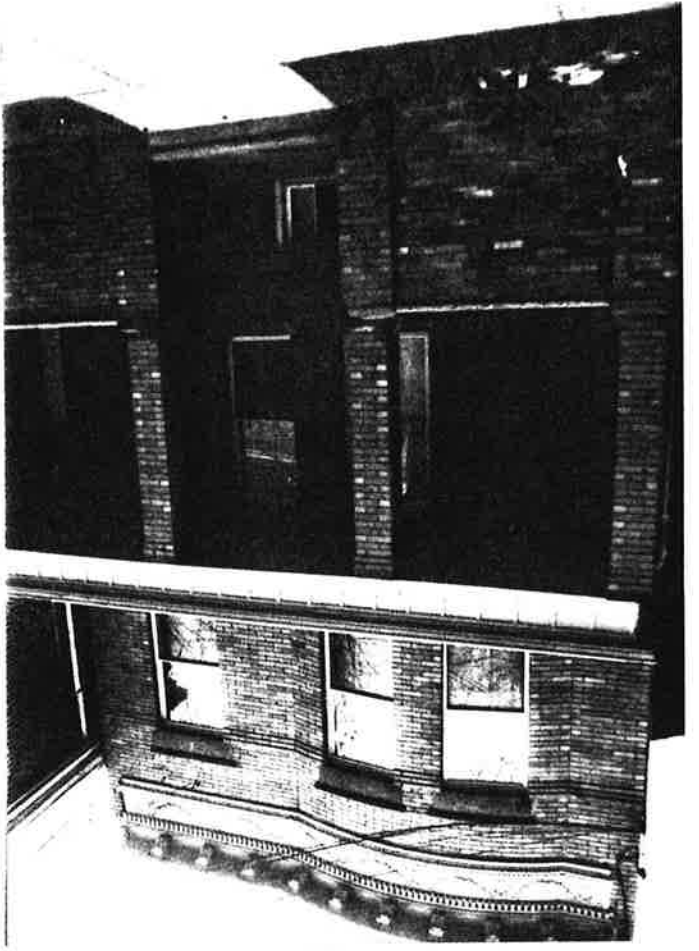
Site No. 0906-D609  
 361-365 Ogden Ave.  
 Jersey City, N.J.  
 Photo Neg. No. 243/31A  
 Map No. 35  
 (bat. 1919-1928)

Ogden Avenue in Washington Village Neighborhood  
of Survey Area (Ward D6) N5H5I # 0906-D6 og.  
 Jersey City, Hudson Co.  
 Page 21 of 25 photo pages.



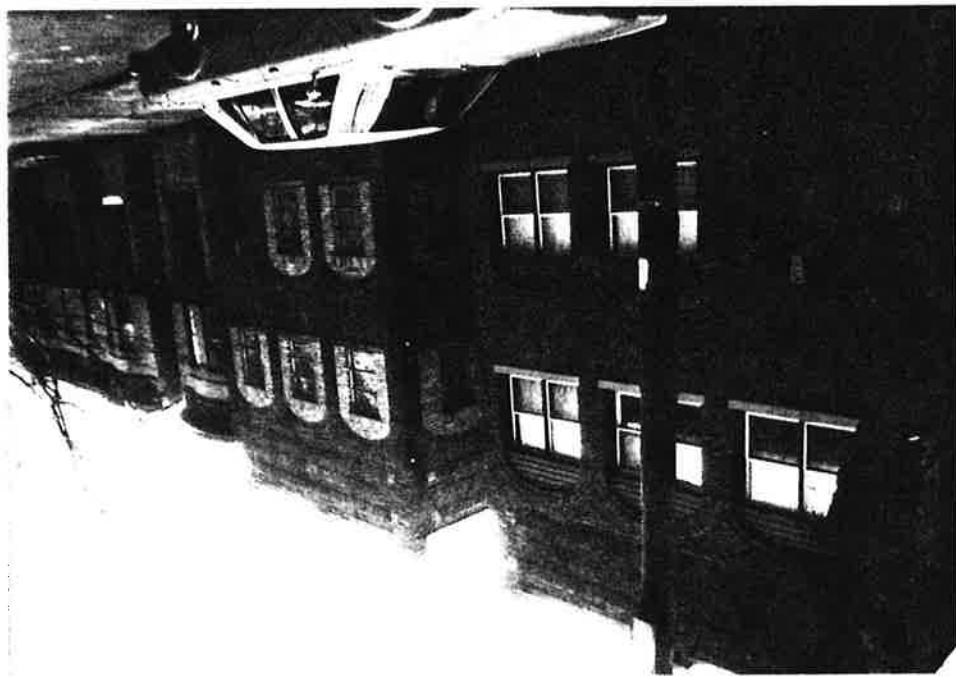
Site No. 0906-D6 og  
 376-378 Ogden Ave.  
 Jersey City, N.J.  
 Photo Neg. No. 243/29A  
 Map No. 36  
 (bet. 1908-1919)

374 Ogden Avenue  
 Photo Neg. No. 243/30A  
 Map No. 36





Site No. 0906-D6 09  
382-384 Ogden Ave.  
Jersey City, N.J.  
Photo Neg. No. 243/27A  
Map No. 37  
(bat. 1919-1928)



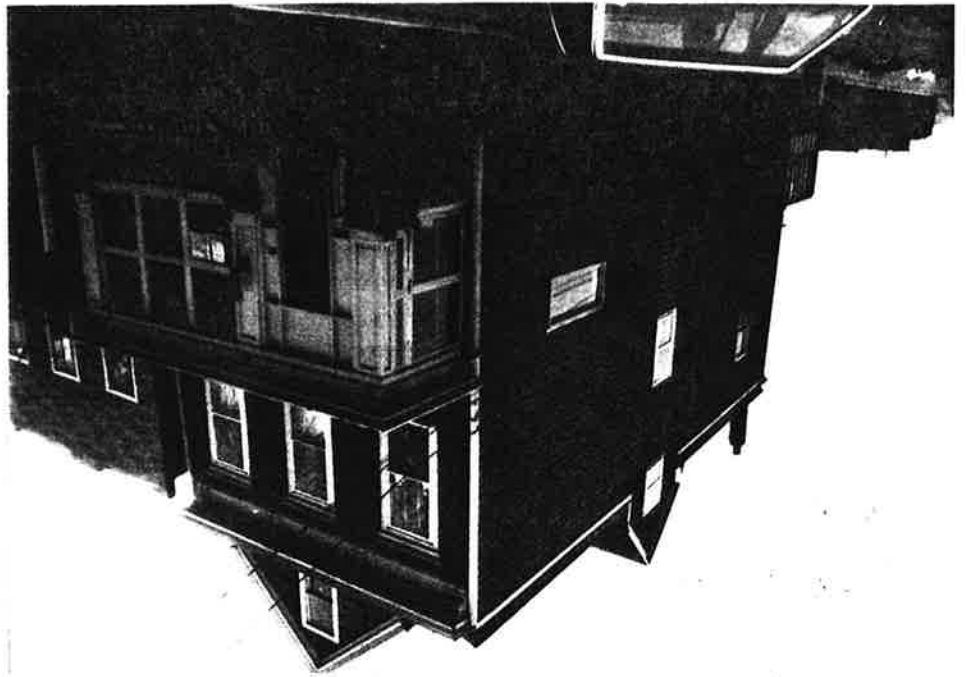
Site No. 0906-D6 09  
383 Ogden Avenue  
Jersey City, N.J.  
Photo Neg. No. 243/28A  
Map No. 38  
(bat. 1873)



Ogden Avenue in Washington Village neighborhood  
of Survey Area (ward 26) NJHSI #0906-D609,  
Jersey City, Hudson Co.  
Page 23 of 25 photo pages.



Site No. 0906-D609  
395 Ogden Avenue  
Jersey City, N.J.  
Photo Neg. No. 243/26A  
Map No. 39  
(bat. 1887-1896)

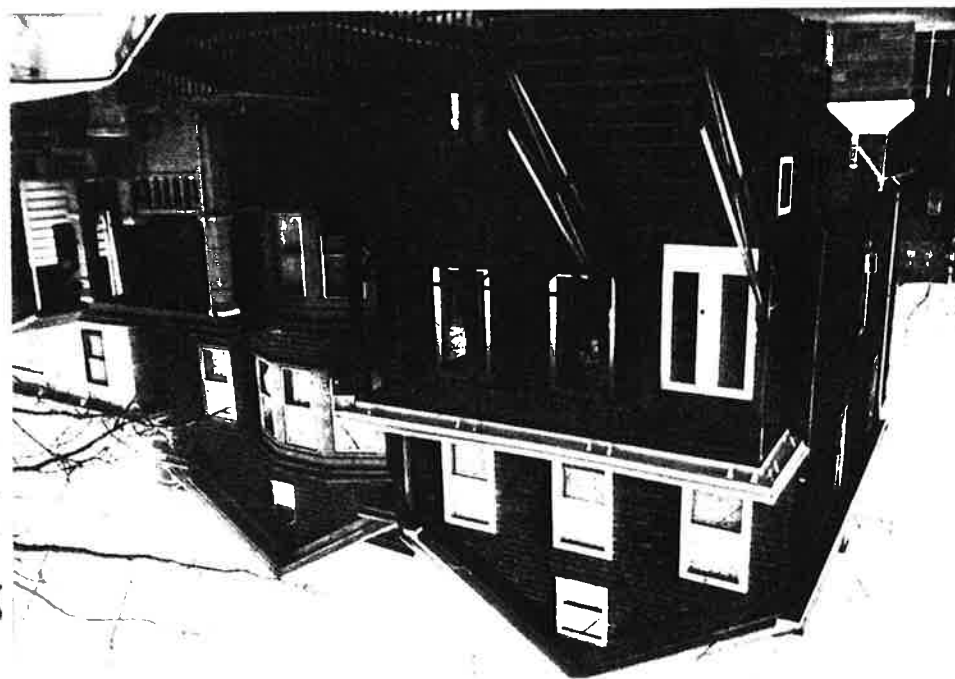


Site No. 0906-D609  
408 Ogden Avenue  
Jersey City, N.J.  
Photo Neg. No. 243/25A  
Map No. 40  
(bat. 1896-1908)



Ogden Avenue in Washington Village Neighborhood  
 of Survey Area (Ward D6) N.J.H.S.I. # 0906-D6 og,  
 Jersey City, Hudson Co.  
 Page 24 of 25 photo pages.

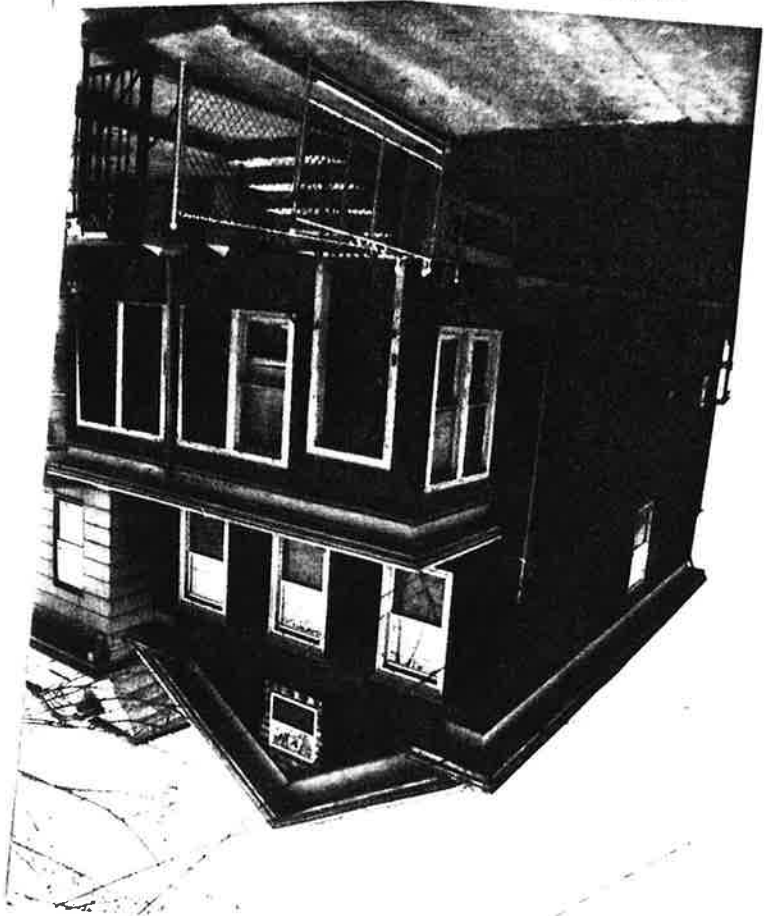
Site No. 0906-D6 og  
 409 Ogden Avenue  
 Jersey City, N.J.  
 Photo Neg. No. 243/24A  
 Map No. 41  
 (bat. 1887-1896)



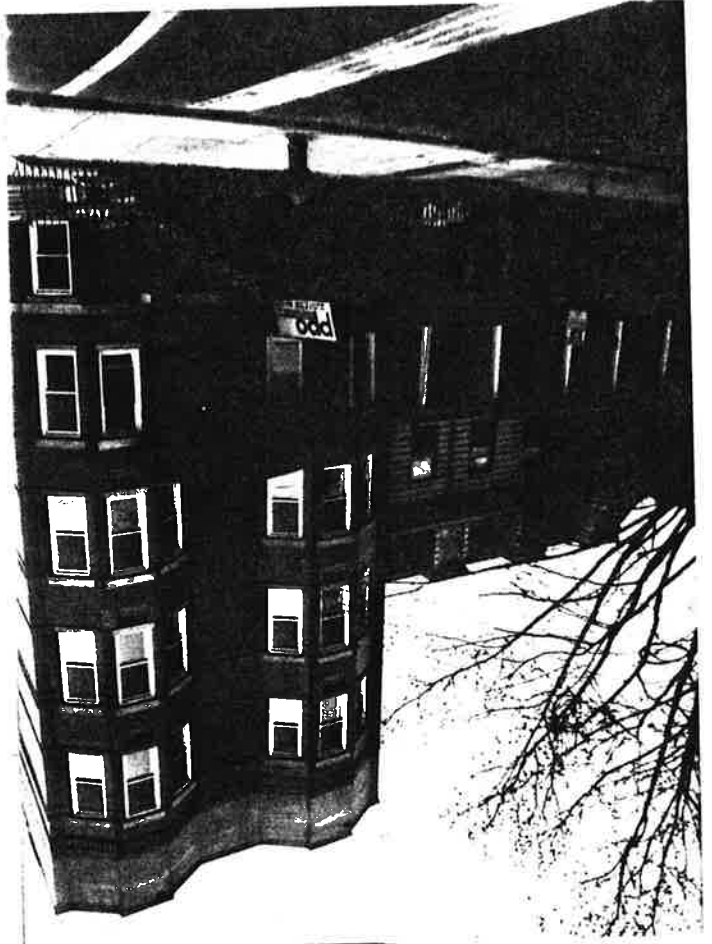
409 Ogden Avenue  
 Photo Neg. No. 48/5  
 Map No. 41 (Detail)



Site No. 0906-D6 09  
 416 Ogden Avenue  
 Jersey City, N.J.  
 Photo Neg. No. 243/23A  
 Map No. 42  
 (before 1873)

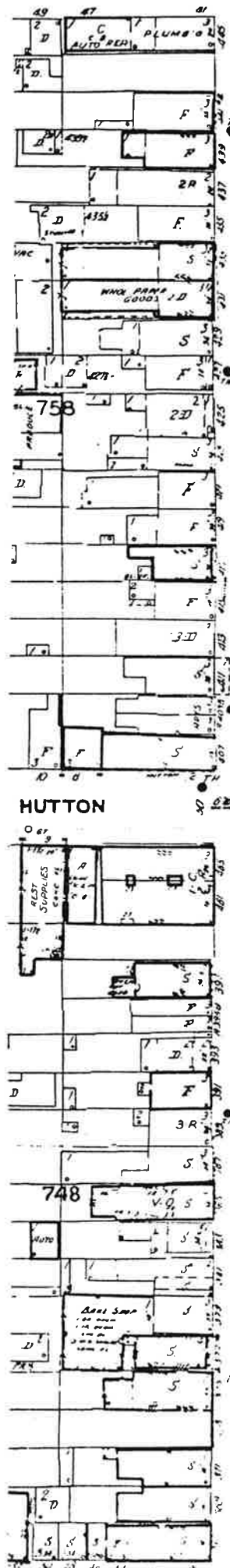
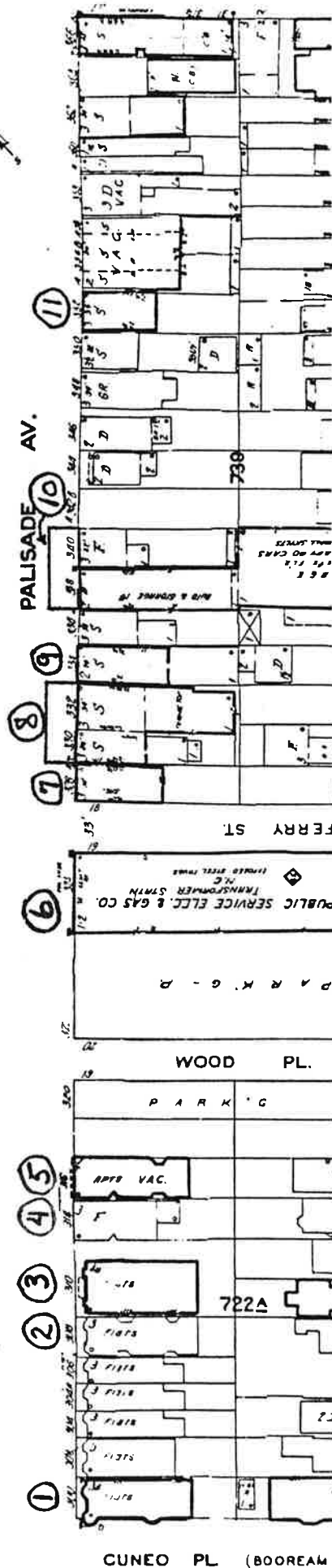


Site No. 0906-D6 09  
 445 Ogden Avenue  
 Jersey City, N.J.  
 Photo Neg. No. 243/22A  
 Map No. 43  
 (bwt. 1908-1919)



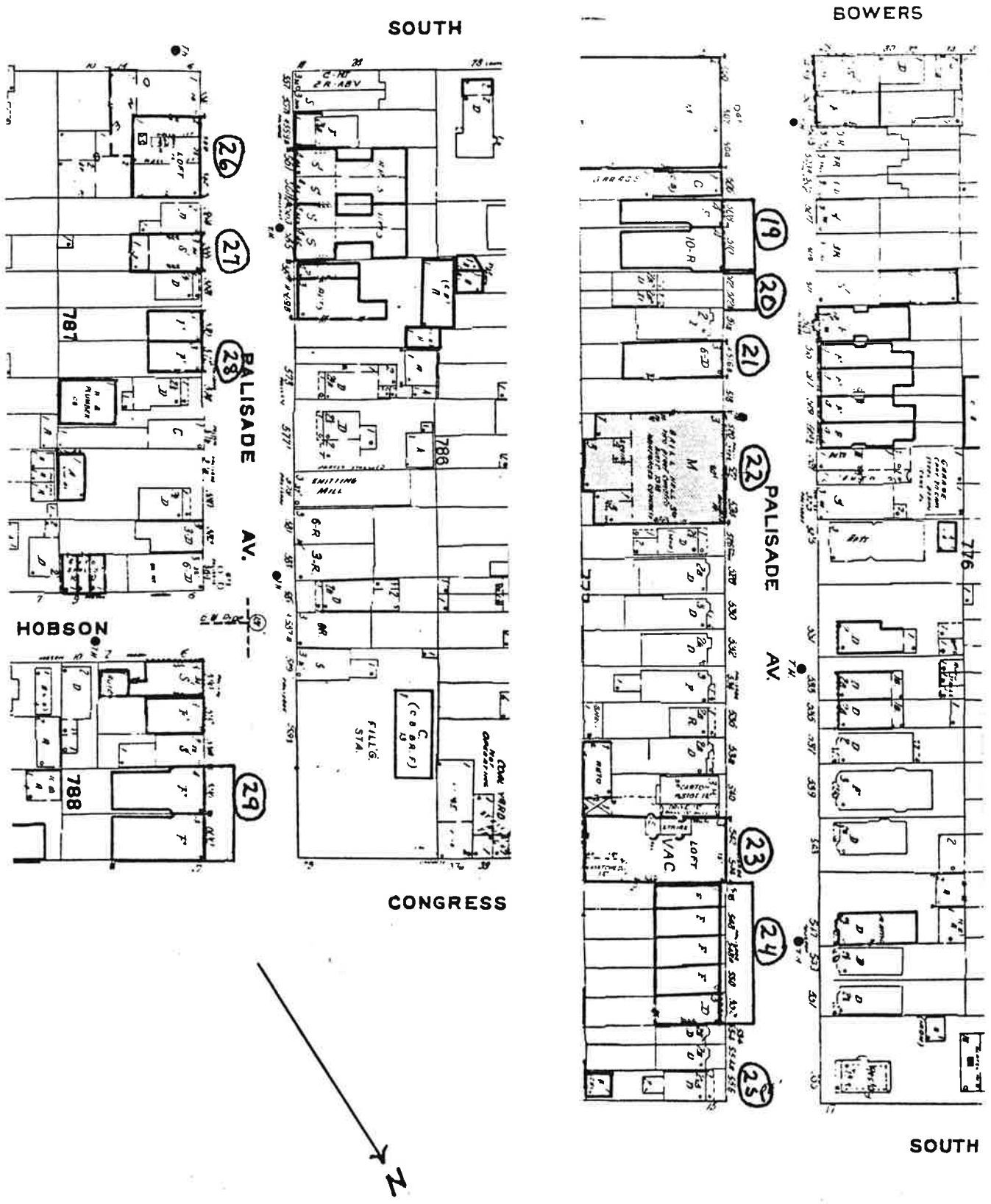


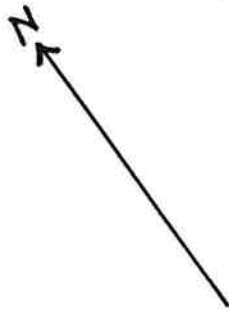
Franklin St.



NJHSI#0906  
D6 pal  
Palisade Avenue  
(Washington  
Village  
Neighborhood)  
Page 1 of 3  
map pages.

NJHSI # 0906  
 D6 par  
 Palisade Avenue  
 (Washington Village Neighborhood)  
 Page 2 of 3 map pages.





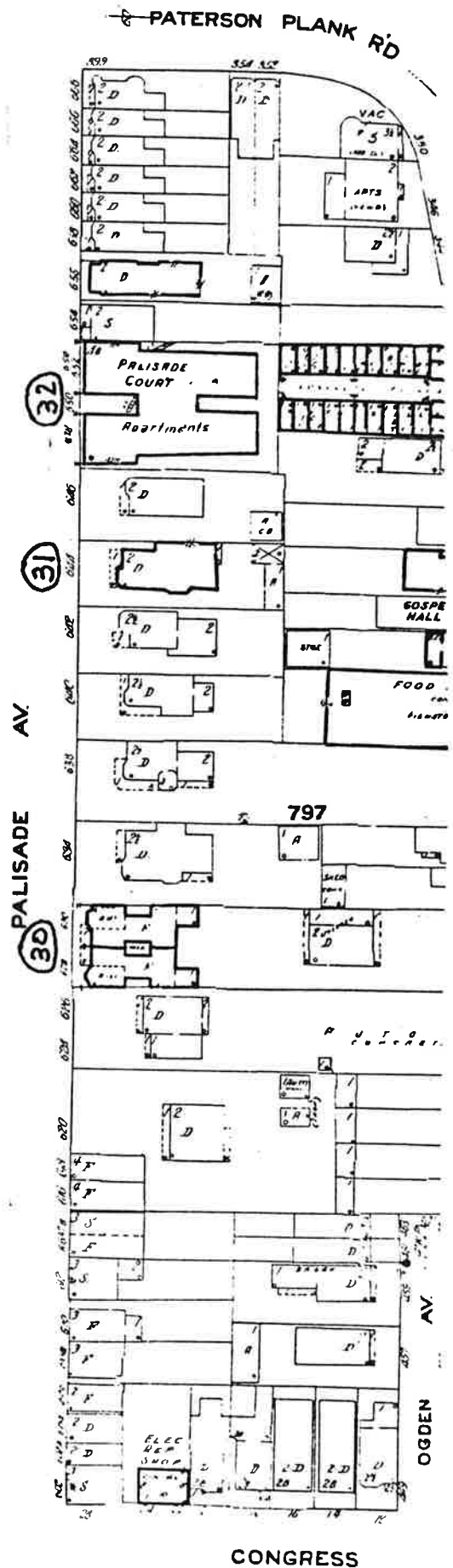
NJH SI # 0906

D6 pal

Palisade Avenue

(Washington Village  
Neighborhood)

Page 3 of 3 map pages.



NEW JERSEY OFFICE OF CULTURAL AND ENVIRONMENTAL SERVICES  
HISTORIC PRESERVATION SECTION  
DISTRICT/STREETSCAPE CONTINUATION SHEET

N.J. HISTORIC SITES INVENTORY

Date 8/85

District/Streetscape Continuation Page # 1. Inventory # 0906-D6 pal

MAP #	ADDRESS/LOCATION : PROPERTY NAME	DATE	Signifi- cance to D/S	Condition	USE	DESCRIPTION: Style, Ext. Wall Fabric, Fenestration, Form, Roof, Major Features, Alterations, Stories, etc.	NEGATIVE FILE #
1.	300 Palisade Avenue Block: 722A (Contact: 182/2)	Between 1896- 1908	P Dist.	G	R <sup>2</sup>	Georgian Revival, 3 stories with basement, brick, 1 main entry, rectangular plan. Portico carried on columns and topped by ornate metal cresting is set before main entry; 2 curvilinear projecting bays rise height of building; elaborate cartouche on 2nd story above entry; rectangular windows with 1/1 sash, stone sills and lintels (the latter flat arched with keystone on ground story); stone water table; decorative banding of 3rd story; bracketed cornice with dentils topped by brick parapet.	Contact: 182/2
2.	308 Palisade Avenue Block: 722A (Contact: 184/9)	Between 1896- 1908	P Dist.	G/ E	R <sup>2</sup>	Italianate Variant, 3 stories, frame, 1 main entry, irregular rectangular plan. Wooden porch carried on columns is set before main entry; 2 tripartite projecting bays rise height of building; rectangular windows with 1/1 sash, bracketed cornice. Building has been resurfaced.	Contact: 184/9
3.	310 Palisade Avenue Block: 722A (Contact: 208/15)	Bet. 1908- 1919	P Dist.	G/ F	R <sup>2</sup>	Commercial style variant, 4 stories with basement, brick, 1 main entry, rectangular plan. Porch with bracketed cornice topped by metal cresting is set before main entry; 2 metal tripartite projecting bays extend 1st-4th stories; rectangular windows with 1/1 sash; decorative panelling below windows on 2nd-4th stories; quoin effect in contrasting brick at corners and in center of building; bracketed cornice topped by metal ornamentation.	Contact: 208/15

NEW JERSEY OFFICE OF CULTURAL AND ENVIRONMENTAL SERVICES  
HISTORIC PRESERVATION SECTION  
DISTRICT/STREETSCAPE CONTINUATION SHEET

N.J. HISTORIC SITES INVENTORY

Date 8/85

District/Streetscape Continuation Page # 2. Inventory # 0906-D6 pal

MAP #	ADDRESS/LOCATION : PROPERTY NAME	DATE	Signifi- cance to D/S	Condition	USE	DESCRIPTION: Style, Ext. Wall Fabric, Fenestration, Form, Roof, Major Features, Alterations, Stories, etc.	NEGATIVE FILE #
4.	314 Palisade Avenue Block: 722A (Contact: 184/7)	Between 1887- 1896	P Dist.	G/ F	R <sup>2</sup>	Neo-Classical Variant, 3 stories, frame, 1 main entry, rectangular plan with rear extension. <u>GROUND STORY</u> : Facade divided by pilasters; triple and single window; single window and central window of triple window topped by round arched head with metal decoration; bracketed cornice extends across top of story. <u>2nd-3rd STORIES</u> : Single and triple window per story; windows rectangular with 1/1 sash; stylized bracketed cornice and parapet with central pediment. Building has been resurfaced to resemble ashlar.	Contact: 184/7, 208/17
5.	316 Palisade Avenue Block: 722A (Contact: 184/6)	1891 (pedi- ment)	P Dist.	G/ F	V	Italianate Variant, 4 stories, 4 bays, brick, 1 main entry, rectangular plan. <u>GROUND STORY</u> : Entry flanked by 2 large windows; window and portal heads segmentally arched with keystone; decorative brickwork panels beneath windows; brick coursed to resemble stone. <u>2nd-4th STORIES</u> : Rectangular windows with 1/1 sash and segmentally arched heads with keystone; decorative brickwork panels below windows; bracketed cornice with modillions and decorative frieze topped by central pediment bearing date 1891.	Contact: 184/6, 208/17
6.	324 Palisade Avenue PSE&G Transformer Station	Between 1908- 1919	P Dist.	G/ E	O	Romanesque Revival transformer station, 1 story, 3 bays, brick, rectangular plan. 3 large bricked-in apertures with round arched heads and stone sills; bricked-in round aperture at top of central bay; brick corbel table; gable roof.	Contact: 184/2



MAP #	ADDRESS/LOCATION : PROPERTY NAME	DATE	Signifi- cance to D/S	Condition	USE	DESCRIPTION: Style, Ext. Wall Fabric, Fenestration, Form, Roof, Major Features, Alterations, Stories, etc.	NEGATIVE FILE #
7.	328 Palisade Avenue Block: 739 (Contact: 210/1)	Between 1873- 1887	P Dist.	G	C/ R	Italianate, 3 stories, 3 bays, brick, 2 main entries, rectangular plan. <u>GROUND STORY</u> : 2 entries; small rectangular window ; <u>canted</u> corner with panelled hood. <u>2nd-3rd STORIES</u> : Rectangular windows with 2/2 sash, stone sills, and lintels with incised decoration;  continuous bracketed cornice with panelled frieze.	Contact: 210/1; 184/3
8.	330-332 Palisade Avenue Block: 739 (Contact: 210/2)	Between 1873- 1887	P Dist.	G/ F	C/ R	Italianate, 3 stories, 7 bays, brick, 2 main entries, rectangular plan with rear extensions. Commercial ground story topped by cornice. <u>2nd-3rd STORIES</u> : Rectangular windows with 1/1 sash, stone sills, and bracketed cornice heads with panelled friezes; bracketed cornice with modillions and plain frieze. 2nd story windows may have been shortened.	Contact: 210/2; 184/3
9.	334 Palisade Avenue Block: 739 (Contact: 210/3)	Between 1873- 1887	P Dist.	G/ F	C/ R	Italianate, 2 stories, 3 bays, brick, rectangular plan. Ground story topped by projecting cornice with dentils, plain frieze, and curved metal top; 2nd story windows rectangular with 1/1 sash, stone sills, and decorative segmentally arched label heads; bracketed cornice with modillions and panelled frieze.	Contact: 210/3; 184/3



NEW JERSEY OFFICE OF CULTURAL AND ENVIRONMENTAL SERVICES  
 HISTORIC PRESERVATION SECTION  
 DISTRICT/STREETSCAPE CONTINUATION SHEET

N.J. HISTORIC SITES INVENTORY

Date 8/85

District/Streetscape Continuation Page # 4. Inventory # 0906-D6 pal

MAP #	ADDRESS/LOCATION : PROPERTY NAME	DATE	Signifi- cance to D/S	Condition	USE	DESCRIPTION: Style, Ext. Wall Fabric, Fenestration, Form, Roof, Major Features, Alterations, Stories, etc.	NEGATIVE FILE #
10.	338-340 Palisade Avenue Block: 739 (Contact: 210/4)	Bel. 1873- 1887	P Dist.	G	C, R2	#338: Early Industrial Style, 2 stories, 3 bays, brick, rectangular plan. 2 entries and large garage door on ground story; 2nd story windows rectangular with single light and segmentally arched heads; brick corbel table. Ground story has been severely altered. #340: Italianate, 3 stories, 3 bays, frame with brick veneer facade, 1 main entry, rectangular plan with rear extension. <u>GROUND STORY</u> : Main entry with elaborate bracketed stone head; single and double window with stone sill; stucco band above windows; stone water table. <u>2nd-3rd STORIES</u> : Segmentally arched windows conforming to decorative, segmentally arched cornice heads; stone sills; bracketed cornice with modillions and panelled frieze. All windows with 1/1 sash. Ground Story fenestration has been altered.	Contact: 210/4, 185/19
11.	352 Palisade Avenue Block: 739 (Contact: 185/17)	before 1873	P Dist.	G	C/ R	Italianate, 3 stories, 3 bays, brick, 2 main entries; rectangular plan. Commercial ground story topped by bracketed cornice with dentils. <u>2nd STORY</u> : Rectangular windows with continuous stone sill and bracketed triangular pedimented window heads. <u>3rd STORY</u> : Rectangular windows with bracketed sills and bracketed cornice heads; bracketed cornice with dentils and panelled frieze. All windows with 1/1 sash. Ground story has been altered. Property listed on 1873 map as belonging to L. Landes.	Contact: 185/17

NEW JERSEY OFFICE OF CULTURAL AND ENVIRONMENTAL SERVICES  
HISTORIC PRESERVATION SECTION  
DISTRICT/STREETSCAPE CONTINUATION SHEET

N.J. HISTORIC SITES INVENTORY

Date 8/85

District/Streetscape Continuation Page # 5. Inventory # 0906-D6 pa1

MAP #	ADDRESS/LOCATION : PROPERTY NAME	DATE	Signifi- cance to D/S	Condition	USE	DESCRIPTION: Style, Ext. Wall Fabric, Fenestration, Form, Roof, Major Features, Alterations, Stories, etc.	NEGATIVE FILE #
12.	368-372 Palisade Avenue Block: 749 (Contact: 11/3)	Between 1919- 1928	P Dist.	G	C/ R R <sup>2</sup>	Decorative Brick twin buildings, 2 stories, brick, multiple entries, rectangular plans. Ground story of #368 has been altered into commercial space; ground story of #370-372 comprised of main entry flanked by rectangular tripartite windows with stone sills. <u>2nd STORY</u> : Each building with tripartite windows in end bays and central single windows; continuous stone sill; decorative brickwork arcade effect topped by parapet with turrets and projections of varying heights. Single matching building around corner at 32 Franklin Street.	Contact: 11/3,4
13.	374-376 Palisade Avenue Block: 749 (Contact: 11/2)	#374 Before 1873; #376 c. 1875	P Dist.	G, G/ F	R <sup>1</sup> V	#374: Greek Revival, 2½ stories, 3 bays, brick, 1 main entry, rectangular plan with rear extension. Non-original porch set on brick piers before entry; stone water table; rectangular windows with 1/1 sash, stone lintels and sills; gable roof. Property listed on 1873 map as belonging to B. Miller. #376: Italianate, 3 stories, 3 bays, brick, rectangular plan. Ground story has been altered. <u>2nd-3rd STORIES</u> : Rectangular windows with 1/1 sash, stone lintels and sills; bracketed cornice with central triangular elevation and panelled frieze.	Contact: 11/2,3

MAP #	ADDRESS/LOCATION : PROPERTY NAME	DATE	Signifi- cance to D/S	Condition	USE	DESCRIPTION: Style, Ext. Wall Fabric, Fenestration, Form, Roof, Major Features, Alterations, Stories, etc.	NEGATIVE FILE #
14.	378 Palisade Avenue Block: 749 (Contact: 11/1)	C. 1875	P Dist.	G	C/ R	Italianate, 3 stories, 3 bays, brick, 2 main entries, rectangular plan. <u>GROUND STORY</u> : Main entry with transom and stone head; bracketed cornice with decorative frieze above store windows. <u>2nd-3rd STORIES</u> : Rectangular windows with 1/1 sash, stone sills, and stone lintels with incised decoration; lintels joined by continuous stone band matching that above entry; ornate cornice with paired brackets, modillions, and panelled frieze. Ground story has been altered.	Contact: 11/1
15.	384-388 Palisade Avenue Block: 749 (Contact: 10/37)	Before 1873	P Dist.	F, G	V, R2	<u>#384</u> : Italianate, 3 stories, 3 bays, brick, 1 main entry, rectangular plan. Rectangular windows with stone lintels and sills; bracketed cornice with modillions. Ground story fenestration has been altered. <u>#386-388</u> : Matching Italianate buildings, 3 stories, brick, each with 1 main entry and rectangular plan; #386 with 4 bays, #388 with 3. All windows rectangular with 1/1 sash, stone sills, and segmentally arched cornice heads; bracketed cornices with modillions. Ground Stories have been resurfaced and fenestration altered.	Contact: 10/37

NEW JERSEY OFFICE OF CULTURAL AND ENVIRONMENTAL SERVICES  
HISTORIC PRESERVATION SECTION  
DISTRICT/STREETSCAPE CONTINUATION SHEET

N.J. HISTORIC SITES INVENTORY

Date 8/85

District/Streetscape Continuation Page # 7. Inventory # 0906-D6 pa1

MAP #	ADDRESS/LOCATION : PROPERTY NAME	DATE	Signifi- cance to D/S	Condition	USE	DESCRIPTION: Style, Ext. Wall Fabric, Fenestration, Form, Roof, Major Features, Alterations, Stories, etc.	NEGATIVE FILE #
16.	398-400 Palisade Avenue Block: 749 (Contact: 10/35)	Bel. 1813- 1887	P Dist.	G/ F	R <sup>2</sup> C	Italianate twin buildings, 3 stories, brick, each with 4 bays and rectangular plan. Bracketed cornice with modillions at top of ground story of #398; all windows rectangular with 2/2 sash, stone sills, and lintels with incised decoration; bracketed cornices with modillions and panelled friezes. The ground story of #398 has been resurfaced and the fenestration altered. The ground story of #400 has been less altered-- 2 windows remain intact.	Contact: 10/35
17.	402 Palisade Avenue Block: 749 (Contact: 10/34)	C. 1875	P Dist.	G	C/ R	Italianate, 3 stories, 3 bays, brick, 2 main entries, rectangular plan with rear extension. Bracketed cornice at top of ground story (partially covered over); rectangular windows with 1/1 sash, stone sills, and decorative stone segmentally arched cornice heads; bracketed cornice with modillions and panelled frieze.	Contact: 10/34
18.	416-418 Palisade Avenue Block: 749 (Contact: 10/31)	Bel. 1813- 1887	P Dist.	G	C/R	2 essentially matching Italianate buildings, 2 stories, brick, multiple entries, each with 3 bays and rectangular plan. At #416 a bracketed cornice extends over the ground story. Each building has rectangular windows with 1/1 sash, stone sills, (bracketed on #418), and bracketed cornice window heads, and a bracketed cornice with a decorative frieze. The 2nd story windows of #416 are at a lower level than those of #418. The ground story of both buildings has been altered.	Contact: 10/31

MAP #	ADDRESS/LOCATION : PROPERTY NAME	DATE	Signifi- cance to D/S	Condition	USE	DESCRIPTION: Style, Ext. Wall Fabric, Fenestration, Form, Roof, Major Features, Alterations, Stories, etc.	NEGATIVE FILE #
19.	508-510 Palisade Avenue Block: 777 (Contact: 242/29)	Between 1896- 1908	P Dist.	E	R <sup>2</sup>	2 matching Georgian/Renaissance Revival buildings, 4 stories, brick, each with 1 main entry, rectangular plan. #510 has 5 bays; #508 has 3 bays and is identical to the left hand 3 bays of #510. <u>GROUND STORY:</u> Main entry of each building comprised of large stone surround with round arched entrance, bracketed over door topped by metal balcony; double windows with continuous stone sill; brick coursed to resemble stone; continuous stone belt course at top of story. <u>2nd-4th STORIES:</u> Rectangular windows with 1/1 sash, stone sills, and stone flat arched lintels with keystone; brick quoins at corners of buildings; bracketed cornices with modillions and plain frieze.	Contact: 242/29
20.	512-512 $\frac{1}{2}$ Palisade Avenue Block: 777 (Contact: 242/28)	Between 1873- 1887	P Dist.	G	R <sup>1</sup>	2 twin mirror image Italianate buildings, 2 stories with basement, 4 bays, frame, 2 main entries, rectangular plan, set very far back. Wooden porch set on turned posts extends across entire ground story; rectangular windows with 1/1 sash and wood enframements; continuous bracketed cornice with modillions and panelled frieze. Basement level has been altered.	Contact: 242/28
21.	516 Palisade Avenue Block: 777 (Contact: 242/27)	Between 1908- 1919	P Dist.	G	R <sup>2</sup>	Georgian/Renaissance Revival, 3 stories, 4 bays, brick, 1 main entry, rectangular plan. <u>GROUND STORY:</u> Main entry flanked by double windows. <u>2nd STORY:</u> Rectangular windows with continuous stone sill and flat stone lintels with console keystone. <u>3rd STORY:</u> Windows with continuous stone sill and segmentally arched heads with stone lintels and console keystone; cornice with paired end brackets, modillions, and panelled frieze. All windows with 1/1 sash; brick quoins at corners of building. Ground story has been completely altered and resurfaced.	Contact: 242/27

NEW JERSEY OFFICE OF CULTURAL AND ENVIRONMENTAL SERVICES  
HISTORIC PRESERVATION SECTION  
DISTRICT/STREETSCAPE CONTINUATION SHEET

N.J. HISTORIC SITES INVENTORY

Date 8/85

District/Streetscape Continuation Page # 9 Inventory # 0906-D6 pal

MAP #	ADDRESS/LOCATION : PROPERTY NAME	DATE	Signifi- cance to D/S	Condition	USE	DESCRIPTION: Style, Ext. Wall Fabric, Fenestration, Form, Roof, Major Features, Alterations, Stories, etc.	NEGATIVE FILE #
22.	522 Palisade Avenue Block: 777 Formerly Jersey City Fire Department's Engine Co. #18 & 10 (Contact: 242/25,26)	1916- 1917 (N.Y. R.E.R.. & Builders Guide & Corner- stone	P Dist.	G	O	Renaissance Revival, 3 stories, 3 bays, brick, rectangular plan. <u>GROUND STORY</u> : 3 large openings (2 now concreted in) with segmentally arched heads with articulated voussoirs and keystones bearing the numbers of the engine companies; 1 secondary entry and 2 concreted-in windows; cornice with bezant decorated frieze. <u>2nd STORY</u> : 3 large windows (concreted-in except for small windows) with stone surround topped by bracketed stone balconies with ornate design. <u>3rd STORY</u> : 3 large windows (concreted-in) with stone surround; bracketed stone cornice surmounted by elaborate stone pediment; stone banding with Greek key design. Concreting of entries and windows are only alterations. Architect: C.H. Ziegler.	Contact: 242/25,26 17/22
23.	542-544 Palisade Avenue Block: 777 (Contact: 242/24)	Between 1919- 1928	P Dist.	F	V	Georgian Revival, 3 stories, 5 bays, brick, 1 main entry, rectangular plan. <u>GROUND STORY</u> : Large windows (now boarded up) with continuous stone sill and lintel with outsized keystones; segmentally arched stone portal head with keystone. <u>2nd-3rd STORIES</u> : Rectangular multi- paned windows with stone sills and lintels with outsized keystone; heads of windows above entry match that of entry; cornice with dentils, plain frieze, and central pediment; circular medallion below pediment. Named Hudson Supply Co. on 1928 map.	Contact: 242/24

NEW JERSEY OFFICE OF CULTURAL AND ENVIRONMENTAL SERVICES  
HISTORIC PRESERVATION SECTION  
DISTRICT/STREETSCAPE CONTINUATION SHEET

N.J. HISTORIC SITES INVENTORY

Date 8/85

District/Streetscape Continuation Page # 10. Inventory # 0906-D6 pal

MAP #	ADDRESS/LOCATION : PROPERTY NAME	DATE	Signifi- cance to D/S	Condition	USE	DESCRIPTION: Style, Ext. Wall Fabric, Fenestration, Form, Roof, Major Features, Alterations, Stories, etc.	NEGATIVE FILE #
24.	546-552 Palisade Avenue 5 buildings (Block: 777) (Contact: 242/23)	Between 1873- 1887	P Dist.	E	R <sup>2</sup>	5 identical Italianate rowhouses, 3 stories, brick; each with 3 bays, 1 main entry, and rectangular plan. Entries with transom and stone lintel; rectangular windows with 1/1 sash, stone sills and lintels; window and portal heads all joined by continuous stone band; bracketed cornices with modillions and panelled friezes. All buildings are unaltered except for the ground story of #552. Buildings were originally part of a group of 6.	Contact: 242/23
25.	556 Palisade Avenue Block: 777 (Contact: 242/37)	Before 1873	P Dist.	G	R <sup>1</sup>	Greek Revival, 2½ stories with basement, frame, 1 main entry, rectangular plan with rear extension. Enclosed porch with triple windows with basket handle heads projects out from facade on ground story; portal head matches that of porch windows; rectangular windows with wood enframements; ½ story window retains original 6/6 sash; gable roof with gable facing street; small, scalloped bargeboard; house covered with fish scale shingles. Property listed on 1873 map and in the 1872-73 Directory as the home of William J. Smith, a clerk.	Contact: 242/37
26.	560-562 Palisade Avenue Block: 787 (Contact: 243/8A)	Before 1873	P Dist.	F/V P		Gothic Revival, 2 stories, brick, multiple entries, rectangular plan. <u>GROUND STORY</u> : Large apertures with round arched heads alternate with pairs of small apertures with pointed arch heads. <u>2nd STORY</u> : Above each large ground story opening, a large window with a brick Gibbs-type surround; belt course forms continuous sill. Building terminates in decorative brickwork band with blind arcade with trefoil motif. Building listed on the 1873 map as the Jersey City Engine House.	Contact: 243/8A

MAP #	ADDRESS/LOCATION : PROPERTY NAME	DATE	Signifi- cance to D/S	Condition	USE	DESCRIPTION: Style, Ext. Wall Fabric, Fenestration, Form, Roof, Major Features, Alterations, Stories, etc.	NEGATIVE FILE #
27.	566 Palisade Avenue Block: 787 (Contact: 243/7A)	Before 1873	P Dist.	G	C/ R	Italianate, 3 stories, 3 bays, brick, 2 main entries, rectangular plan with rear extension. <u>GROUND STORY</u> : Cornice with plain frieze runs across top of story. <u>2nd-3rd STORIES</u> : Rectangular windows with 2/2 sash, stone sills, and decorated segmentally arched cornice heads; bracketed cornice with panelled frieze with ornate decoration in relief. Property listed on the 1873 map and in the 1872-73 Directory as belonging to Jacob Ehler, a tailor. Ground story has been altered into commercial store front.	Contact: 243/7A
28.	572 Palisade Avenue Block: 787 (Contact: 243/6A)	Before 1873	P Dist.	G/ F	R <sup>2</sup>	Italianate, 3 stories, 3 bays, brick, 1 main entry, rectangular plan. <u>GROUND STORY</u> : Entry with 10 light transom; tripartite window; bracketed cornice with panelled frieze runs across top of story. <u>2nd-3rd STORIES</u> : Rectangular windows with 2/2 sash, stone sills, and cornice heads; bracketed cornice with panelled frieze. Listed on the 1873 map and in the 1872-73 Directory as the home of Nathaniel Boyd, an inspector. Fenestration of ground story has been altered; an unsightly and inappropriate repair between ground and 2nd stories mars facade; through-wall air conditioner; missing tassel on 1 bracket.	Contact: 243/6A



MAP #	ADDRESS/LOCATION : PROPERTY NAME	DATE	Signifi- cance to D/S	Condition	USE	DESCRIPTION: Style, Ext. Wall Fabric, Fenestration, Form, Roof, Major Features, Alterations, Stories, etc.	NEGATIVE FILE #
29.	596-600 Palisade Avenue (2 buildings) Block: 788 (Contact: 243/4A)	Between 1896- 1908	P Dist.	E	R <sup>2</sup>	Twin Georgian Revival apartments with continuous facade, 4 stories, brick; each with 5 bays, 1 main entry, and rectangular plan. GROUND STORY: Main entries with stone, segmentally arched head with keystone; each entry flanked by rectangular double windows with stone sills; large, continuous stone water table; continuous stone belt course at top of story. 2nd-4th STORIES: Rectangular windows with stone sills and flat arched lintels with keystone ; all windows with 1/1 sash; large bracketed cornice with dentils and plain frieze.	Contact: 243/4A
30.	628-630 Palisade Avenue Block: 797 (Contact: 243/19A)	Between 1908- 1919	P Dist.	G/ F	R <sup>2</sup>	Twin Decorated Brick apartments, 3 stories, brick, each with 2 entries and I-shaped plan with rear extension. Each building with tripartite projecting bay extending 2nd-3rd stories and single window above entry; all windows rectangular with 1/1 sash, stone sills, and brick lintels; above 3rd story windows, decorative brick band with medallions topped by brick parapet with balustrade. Ground story of #630 has been resurfaced; porch above 2nd story entries has been removed and area stuccoed over; 2 windows on 3rd story have been bricked-in.	Contact: 243/19A

NEW JERSEY OFFICE OF CULTURAL AND ENVIRONMENTAL SERVICES  
 HISTORIC PRESERVATION SECTION  
 DISTRICT/STREETSCAPE CONTINUATION SHEET

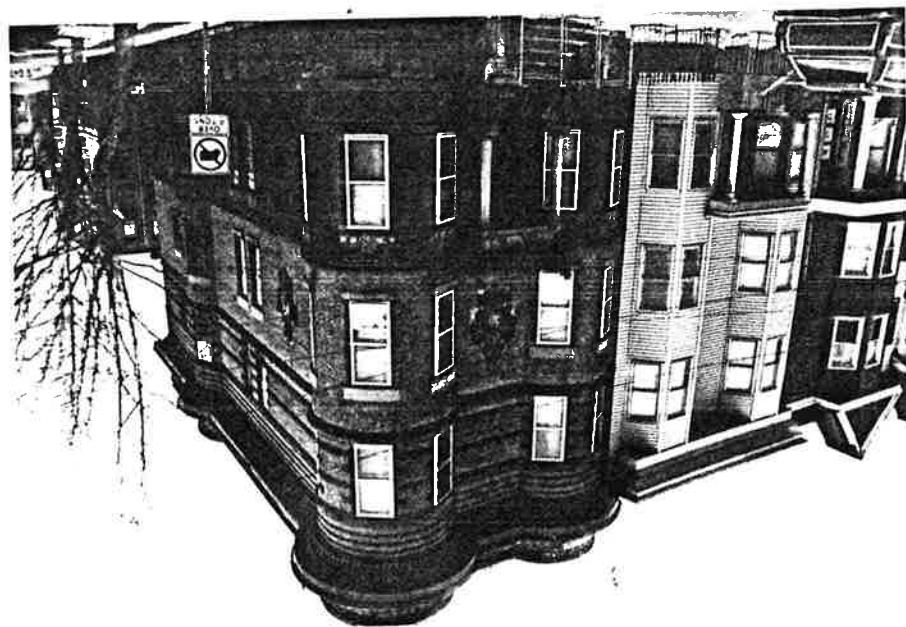
N.J. HISTORIC SITES INVENTORY

Date 8/85District/Streetscape Continuation Page # 13. Inventory # 0906-D6 pa1

MAP #	ADDRESS/LOCATION : PROPERTY NAME	DATE	Signifi- cance to D/S	Condition	USE	DESCRIPTION: Style, Ext. Wall Fabric, Fenestration, Form, Roof, Major Features, Alterations, Stories, etc.	NEGATIVE FILE #
31.	644 Palisade Avenue Block: 797 (Contact: 243/16A)	Between 1896- 1908	P Dist.	E	R <sup>1</sup>	Georgian Revival Variant, 2 stories, brick, 1 main entry, irregular rectangular plan. Wooden porch with bracketed cornice set on brick piers extends across ground story; curvilinear projecting bay rises height of building; rectangular windows with 1/1 sash and ornate stone label lintels with console keystone; stone belt courses extending across facade form continuous sills; bracketed cornice topped by brick parapet.	Contact: 243/16A
32.	650 Palisade Avenue Palisade Court Apartments Block: 797 (Contact: 243/15A)	Between 1919- 1928	P Dist.	G	R <sup>2</sup>	Decorated Brick, 4 stories with basement, brick, 1 main entry, H-shaped plan. Deeply recessed entry with 2 single windows on each floor above; tripartite windows with varying sash and stone sills in projecting sections; stone belt course at top of ground story; building terminates in brick parapet with decorative stone panels and stone colonettes.	Contact: 243/15A

Palisade Avenue in Washington Village Neighborhood  
of Survey Area (Ward D6) N5HST #0906-D6 pal,  
Survey City, Hudson Co.

Page 1 of 17 photo pages.

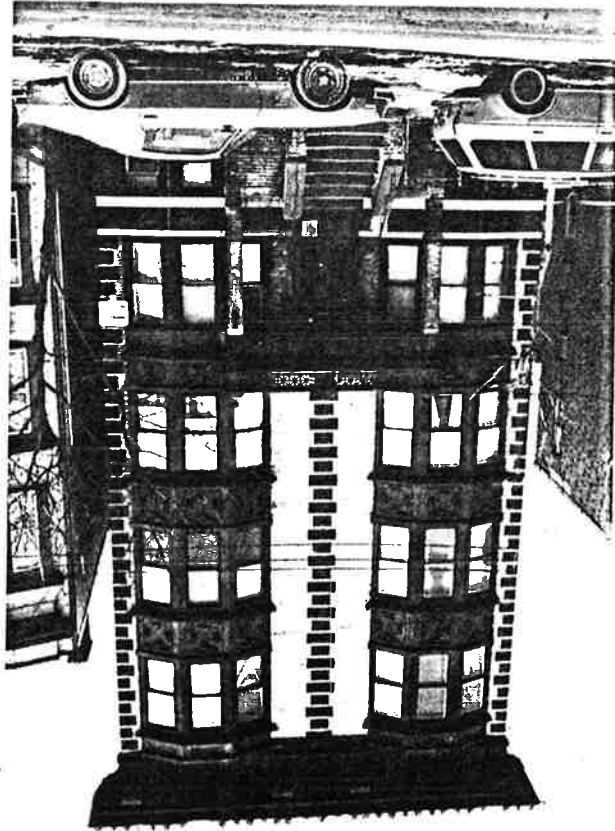


Site No. 0906-D6 pal  
 300 Palisade Ave.  
 Survey City, N.J.  
 Photo Neg. No. 182 1/2  
 Map No. 1  
 (bat. 1896-1908)

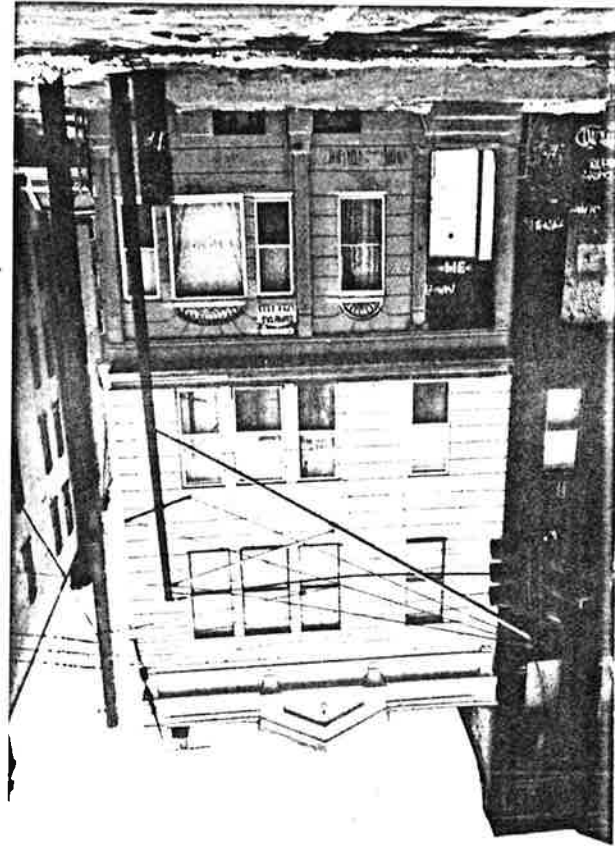
Site No. 0906-D6 pal  
 308 Palisade Avenue  
 Survey City, N.J.  
 Photo Neg. No. 184 1/2  
 Map No. 2  
 (bat. 1896-1908)



Site No. 0906-D6 pal  
 310 Palisade Avenue  
 Jersey City, N.J.  
 Photo Neg. No. 208/15  
 Map No. 3  
 (bat. 1908-1919)

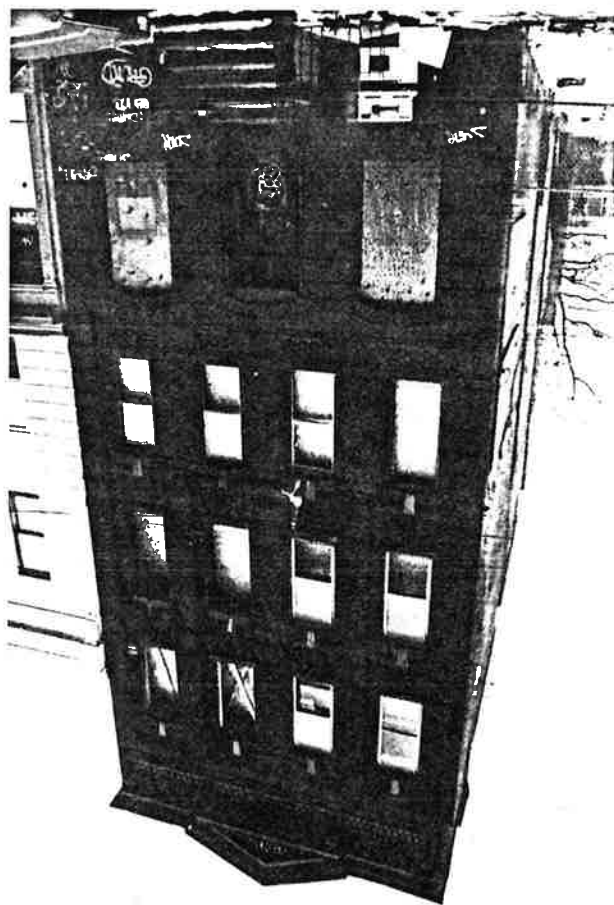


Site No. 0906-D6 pal  
 314 Palisade Avenue  
 Jersey City, N.J.  
 Photo Neg. No. 184/7  
 Map No. 4  
 (bat. 1887-1896)

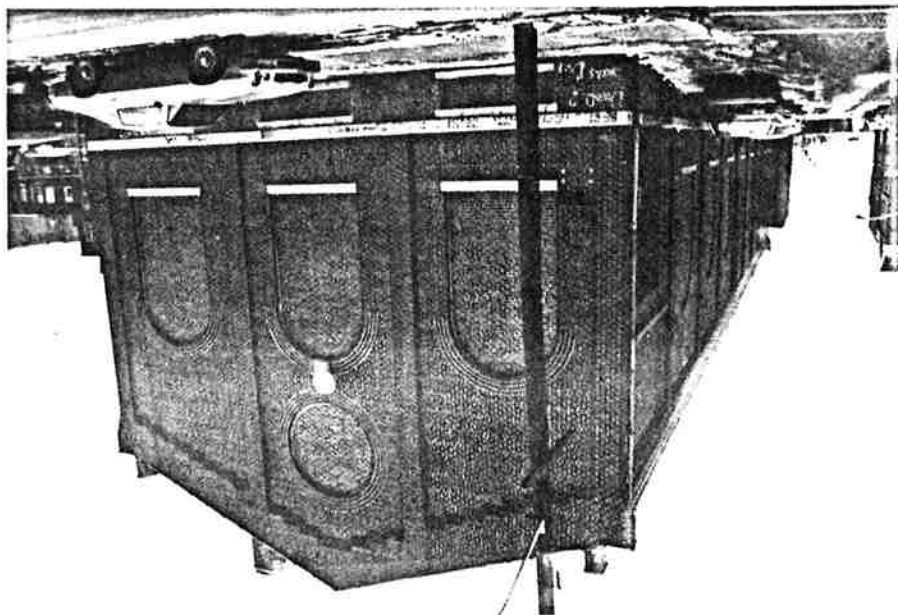


Palisade Avenue in Washington Village Neighborhood  
 of Survey Area (ward 26) N5H5E # 0906-D6 pad,  
 Jersey City, Hudson Co.  
 Page 3 of 17 photo pages.

Site No. 0906-D6 pad  
 316 Palisade Avenue  
 Jersey City, N.J.  
 Photo Neg. No. 184/6  
 Map No. 5  
 (1891)

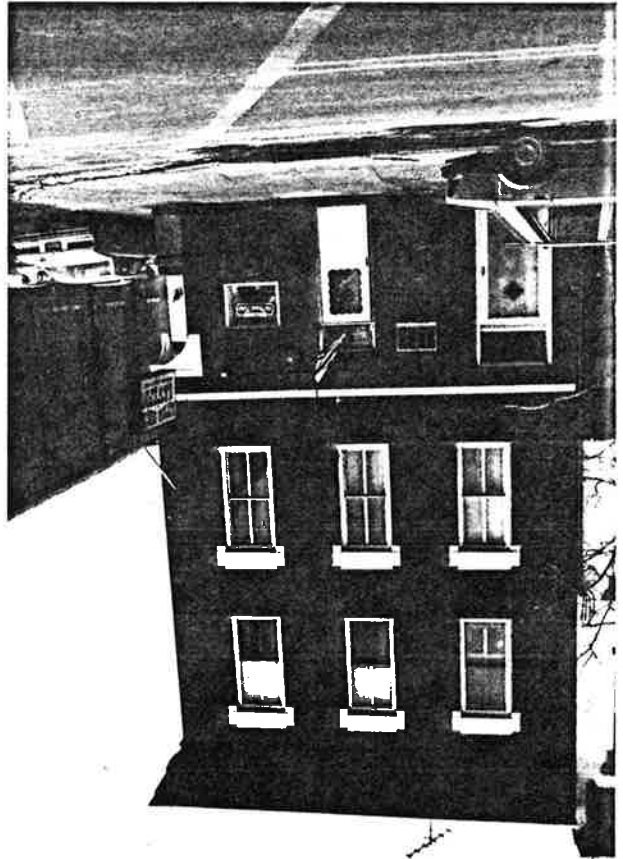


Site No. 0906-D6 pad  
 324 Palisade Ave.  
 Jersey City, N.J.  
 Photo Neg. No. 184/2  
 Map No. 6  
 (bat. 1908-1919)

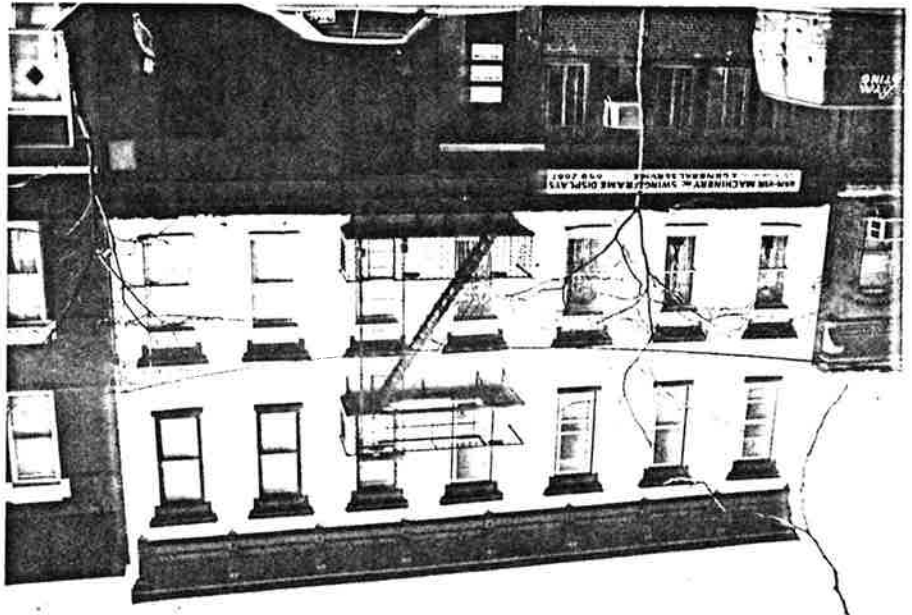


Palisade Avenue in Washington Village Neighborhood  
 of Survey Area (Ward D6) N5HST #0906-D6 pal,  
 Jersey City, Hudson Co.  
 Page 4 of 17 photo pages.

Site No. 0906-D6 pal  
 328 Palisade Avenue  
 Jersey City, N.J.  
 Photo Neg. No. 210/1  
 Map No. 7  
 (bet. 1873-1887)



Site No. 0906-D6 pal  
 330-332 Palisade Ave.  
 Jersey City, N.J.  
 Photo Neg. No. 210/2  
 Map No. 8  
 (bet. 1873-1887)





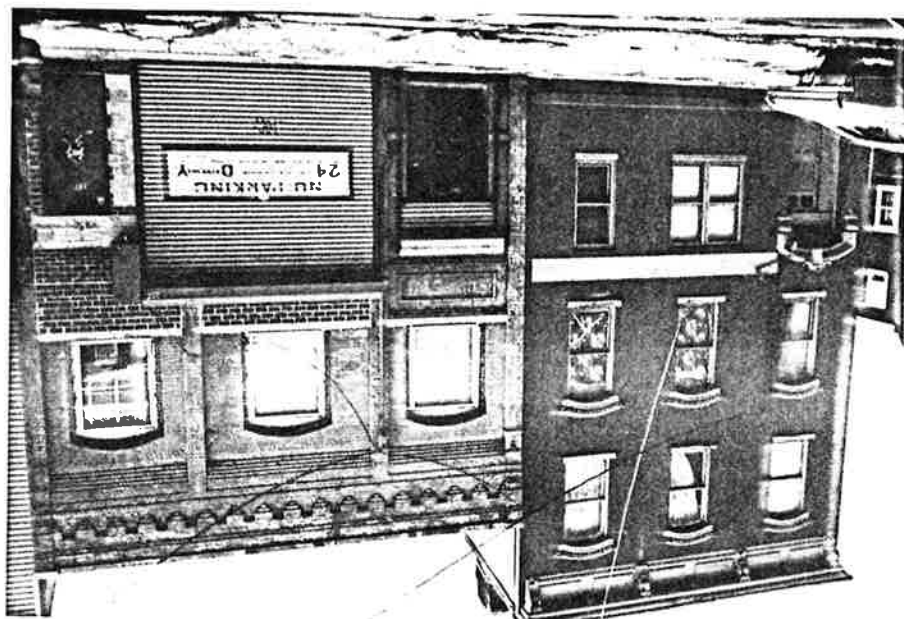
Palisade Avenue in Washington Village Neighborhood  
of Surrey Area (ward D6) N5HSI # 0906-D6 pal,  
Surrey City, Hudson Co.  
Page 5 of 17 photo pages.

Site No. 0906-D6 pal  
334 Palisade Avenue  
Surrey City, N.Y.  
Photo Neg. No. 210/3  
Map No. 9  
(bat. 1873-1887)



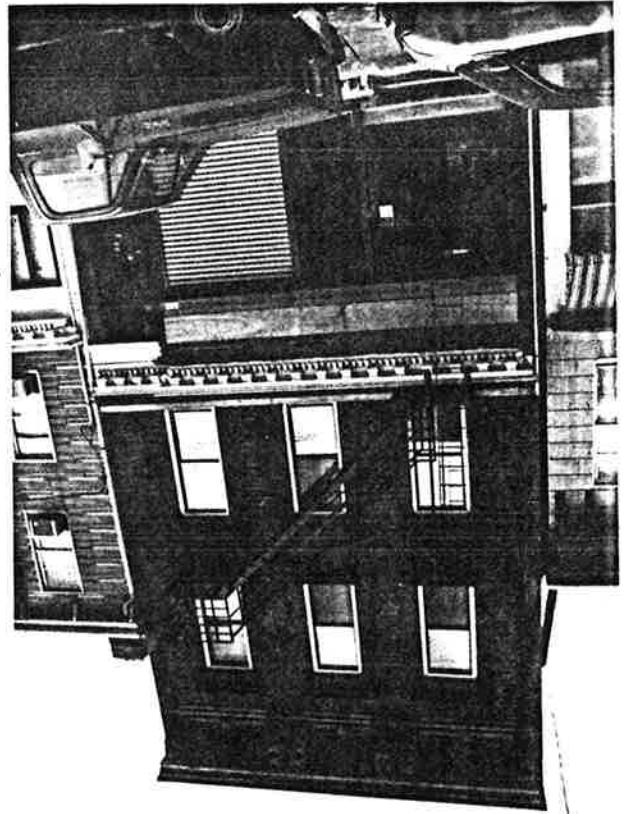
(bat. 1873-1887)

Site No. 0906-D6 pal  
338-340 Palisade Ave.  
Surrey City, N.Y.  
Photo Neg. No. 210/4  
Map No. 10

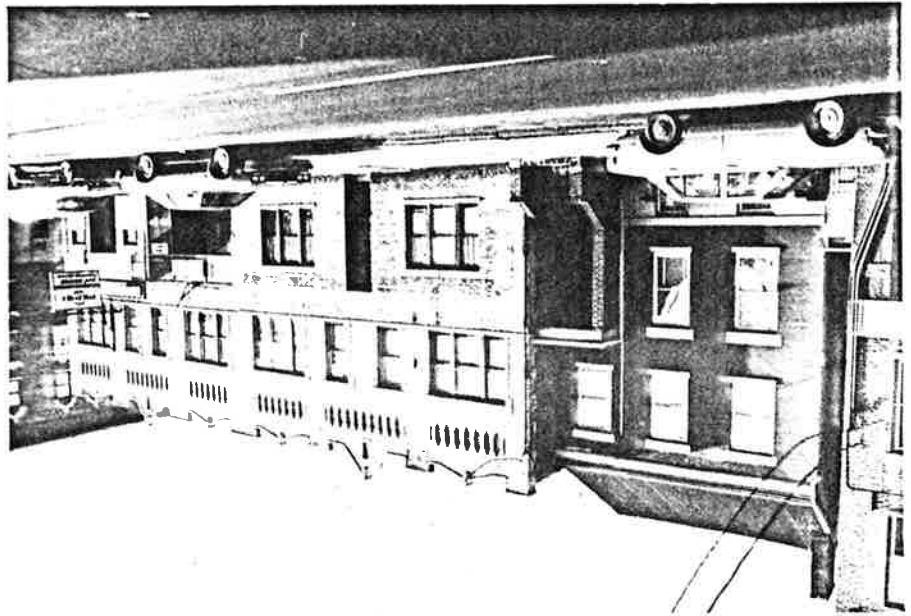


Palisade Avenue in Lookington Village Neighbourhood  
of Survey Area (ward D6) NJHST #0906-D6 pol,  
Jersey City, Hudson Co.  
Page 6 of 17 photo pages.

Site No. 0906-D6 pol  
352 Palisade Avenue  
Jersey City, N.J.  
Photo Neg. No. 185/17  
Map No. 11  
(before 1873)

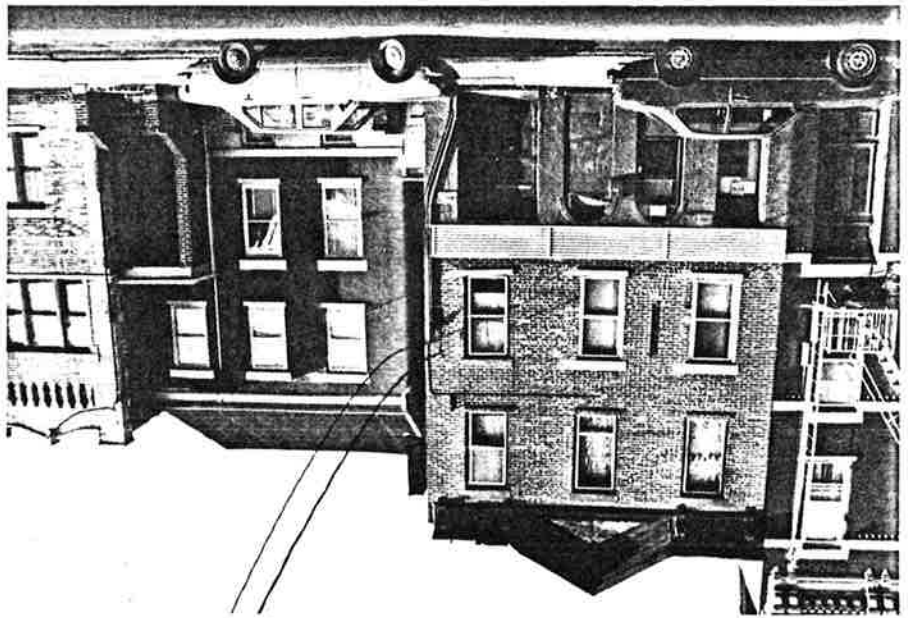


Site No. 0906-D6 pol  
368-372 Palisade Ave.  
Jersey City, N.J.  
Photo Neg. No. 11/3  
Map No. 12  
(bet. 1919-1928)

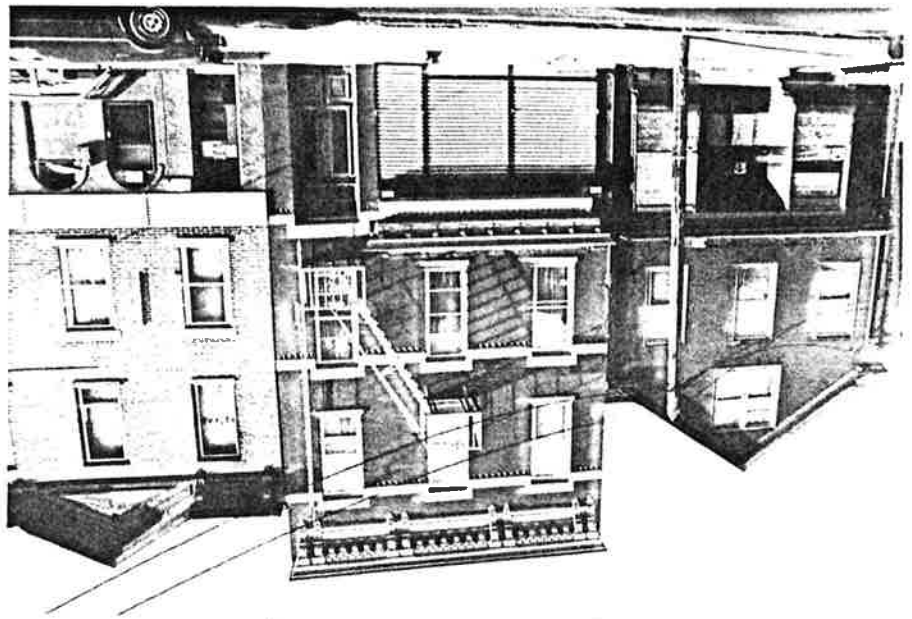




Palisade Avenue in Washington Village Neighborhood  
 of Survey Area (ward D6) NJHST # 0906-D6 pad,  
 Jersey City, Hudson Co.  
 Page 7 of 14 photo pages.



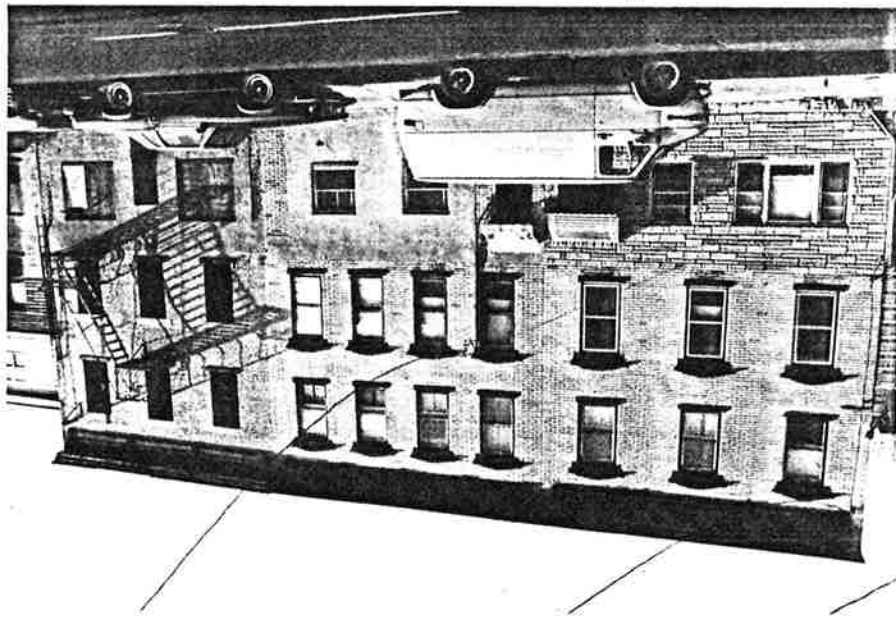
Site No. 0906-D6 pad  
 374-376 Palisade Ave.  
 Jersey City, N.J.  
 Photo Neg. No. 11/2  
 Map No. 13  
 (# 374 before 1873;  
 # 376 C. 1875)



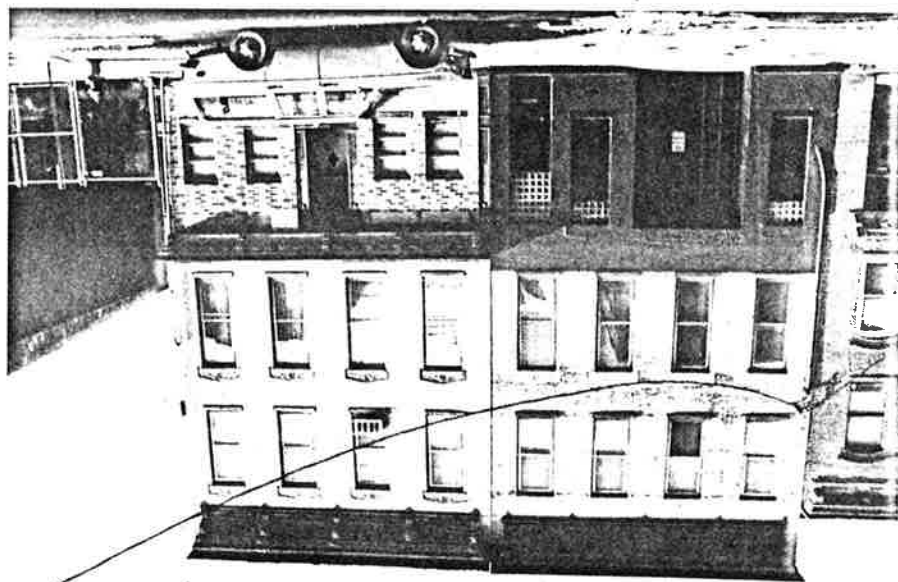
Site No. 0906-D6 pad  
 378 Palisade Ave.  
 Jersey City, N.J.  
 Photo Neg. No. 11/1  
 Map No. 14  
 (C. 1875)

Palisade Avenue in Washington Village Neighborhood  
 of Survey Area (ward D6) NTH SI #0906-D6 pal,  
 Jersey City, Hudson Co.  
 Page 2 of 14 photo pages.

Site No. 0906-D6 pal  
 384-388 Palisade Ave.  
 Jersey City, N.J.  
 Photo Neg. No. 10/37  
 Map No. 15  
 (before 1873)

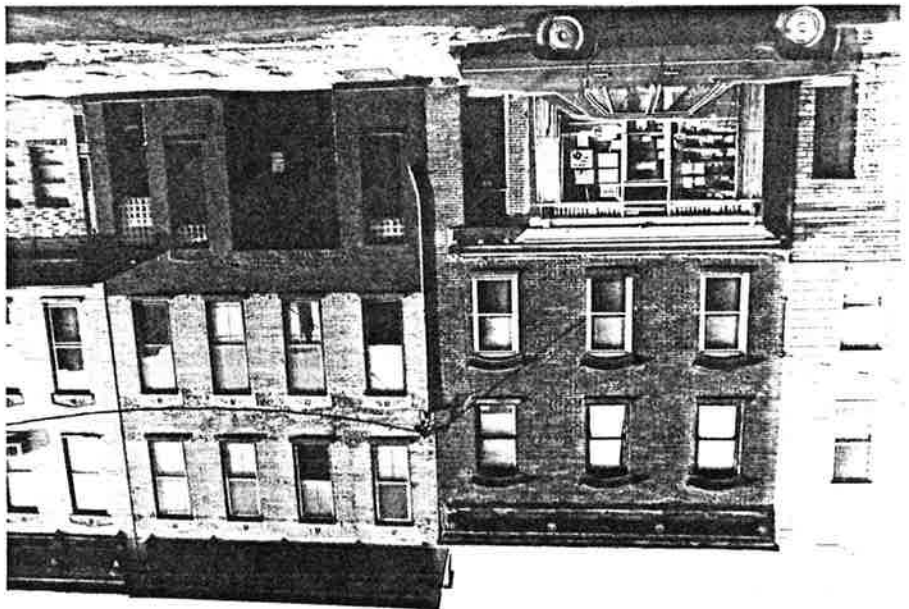


Site No. 0906-D6 pal  
 398-400 Palisade Ave.  
 Jersey City, N.J.  
 Photo Neg. No. 10/35  
 Map No. 16  
 (bet. 1873-1887)

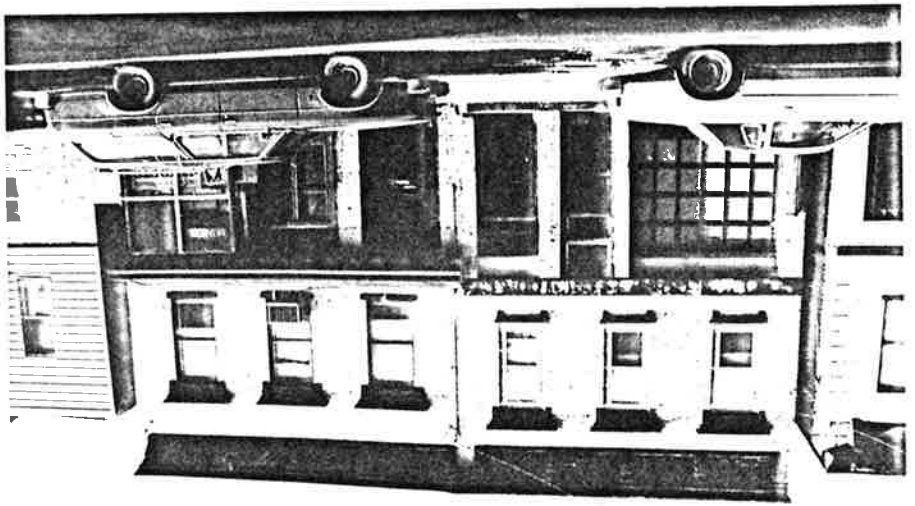


Palinade Avenue in Washington Village Neighborhood  
of Survey Area (ward D6) KJHSI # 0906-D6 pd,  
Jensen City, Hudson Co.  
Page 9 of 17 photo pages.

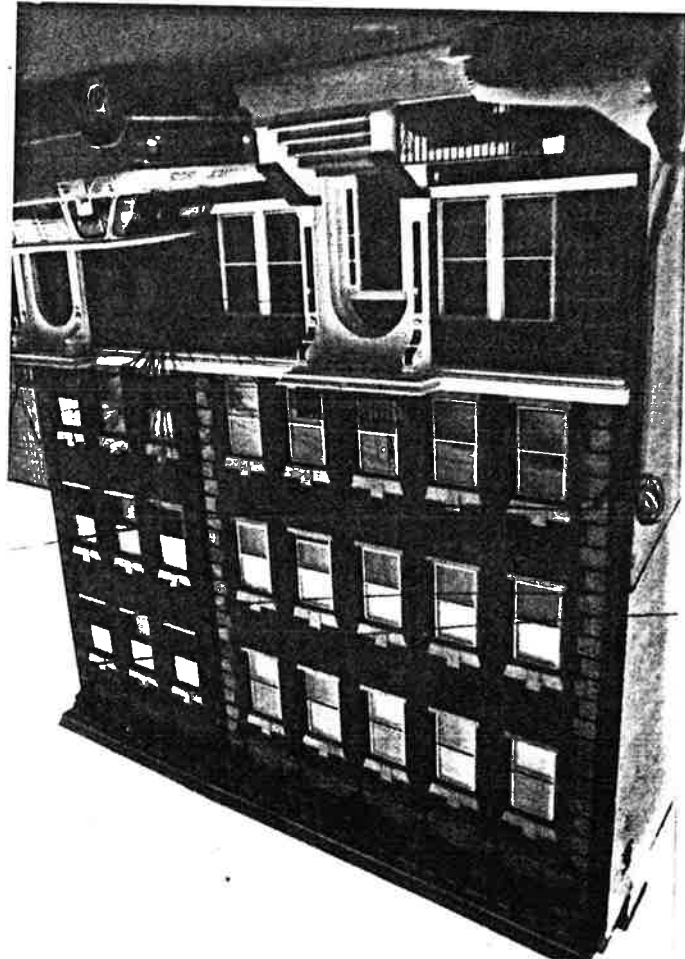
Site No. 0906-D6 pd  
402 Palinade Avenue  
Jensen City, N.J.  
Photo Neg. No. 10/34  
Map No. 17  
(c. 1875)



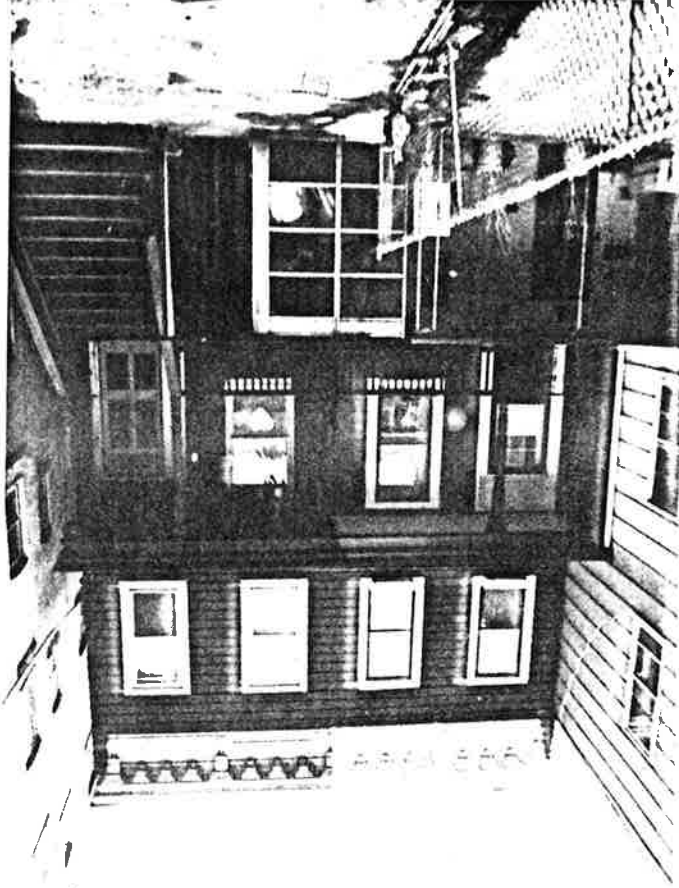
Site No. 0906-D6 pd  
416-418 Palinade Ave  
Jensen City, N.J.  
Photo Neg. No. 10/31  
Map No. 18  
(bat. 1813-1887)



Site No. 0906-D6 pal  
 508-510 Palisade Avenue  
 Jersey City, N.J.  
 Photo Neg. No. 242/29  
 Map No. 19  
 (bat. 1896-1908)



Site No. 0906-D6 pal  
 512-512 1/2 Palisade Ave.  
 Jersey City, N.J.  
 Photo Neg. No. 242/28  
 Map No. 20  
 (bat. 1873-1887)



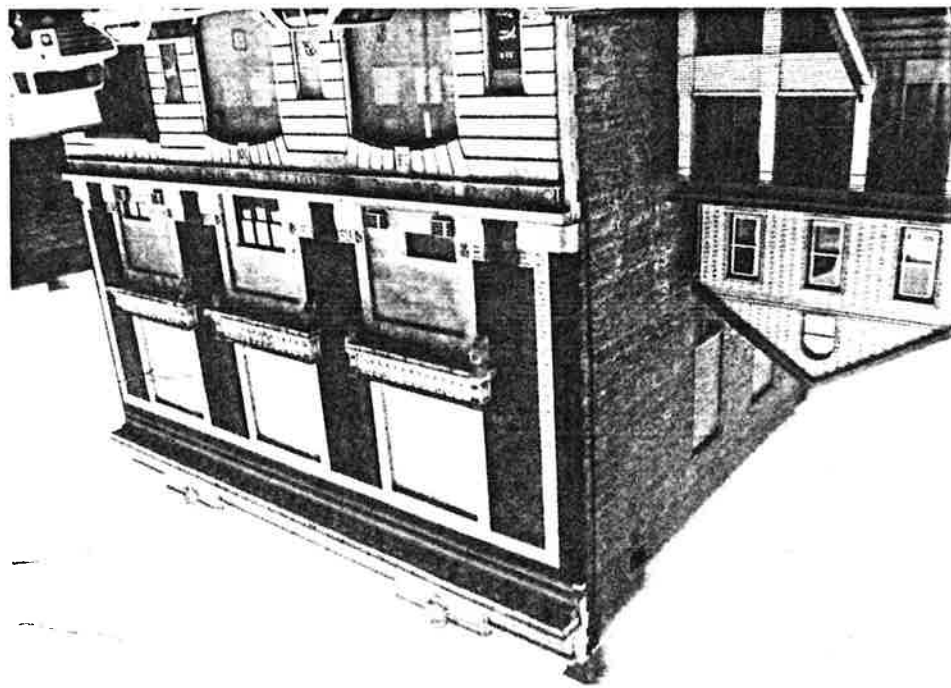
Palisade Avenue in Washington Village Neighborhood  
of Survey Area (ward D6) N5H5I #0906-D6 pal,  
Jersey City, Hudson Co.  
Page II of 17 photo pages.

Site No. 0906-D6 pal  
516 Palisade Avenue  
Jersey City, N.J.  
Photo Neg. No. 242/27  
Map No. 21  
(bet. 1908-1919)



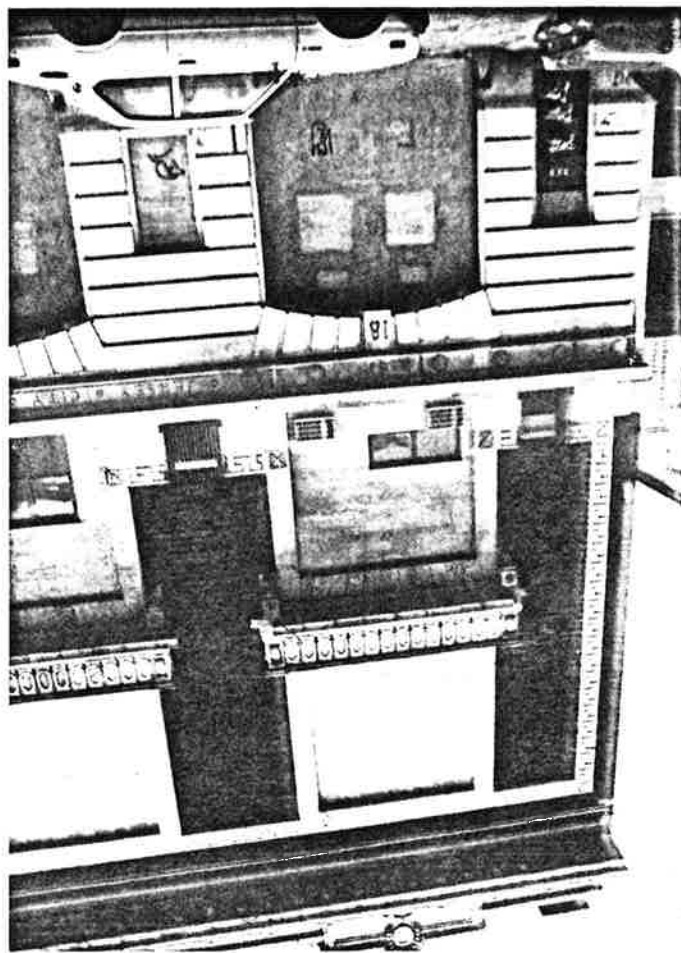


Palisade Avenue in Washington Village Neighborhood  
 of Survey Area (ward D6) N5HSE #0906-D6 par,  
 Jersey City Hudson Co.  
 Page 12 of 17 photo pages.



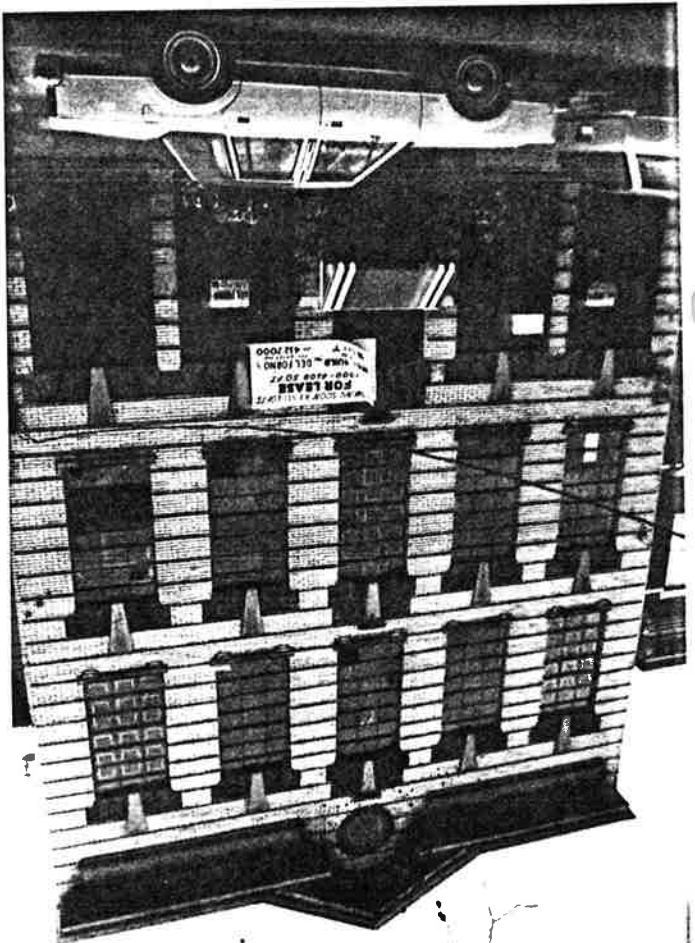
Site No. 0906-D6 par  
 522 Palisade Ave.  
 J.C. Fire Dept. #18410  
 Jersey City N.J.  
 Photo Neg. No. 242/25  
 Map No. 22  
 (1916-1917)  
 Architect  
 Christian H. Ziegler  
 R & R 1916

522 Palisade Avenue  
 Photo Neg. No. 242/26  
 Map No. 22 (Detail)

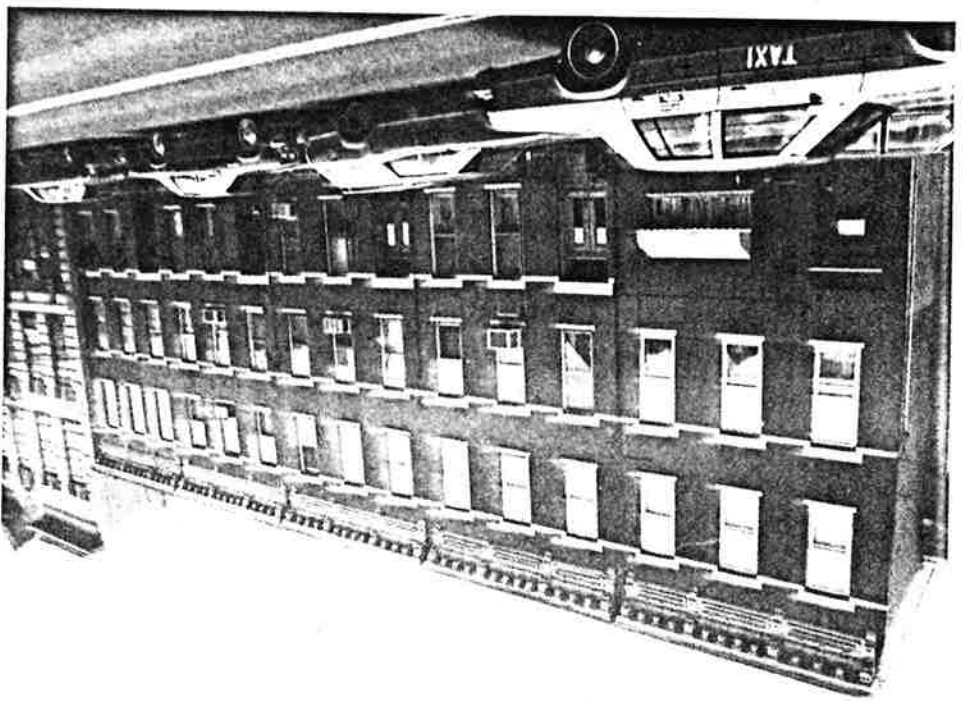


Palisade Avenue in Washington Village Neighborhood  
 of Survey Area (ward D6) UTHSI #0906-D6 pol,  
 Jersey City, Hudson Co.  
 Page 13 of 17 photo pages.

Site No. 0906-D6 pol  
 542-544 Palisade Ave.  
 Jersey City, N.J.  
 Photo Neg. No. 242/24  
 Map No. 23  
 (bet. 1919-1928)



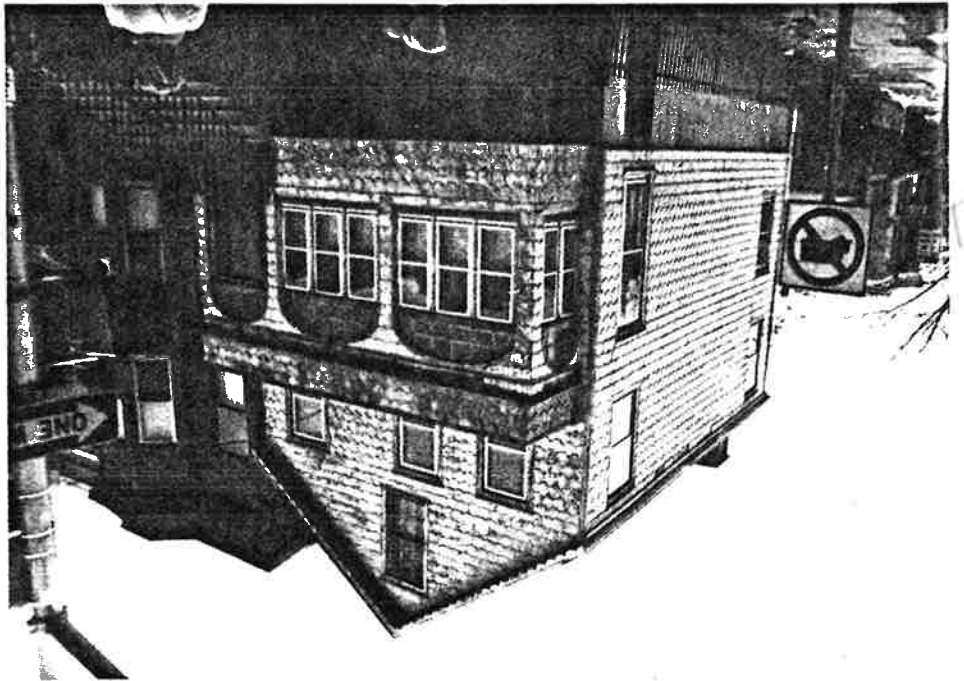
Site No. 0906-D6 pol  
 546-552 Palisade Ave.  
 Jersey City, N.J.  
 Photo Neg. No. 242/23  
 Map No. 24  
 (bet. 1873-1887)



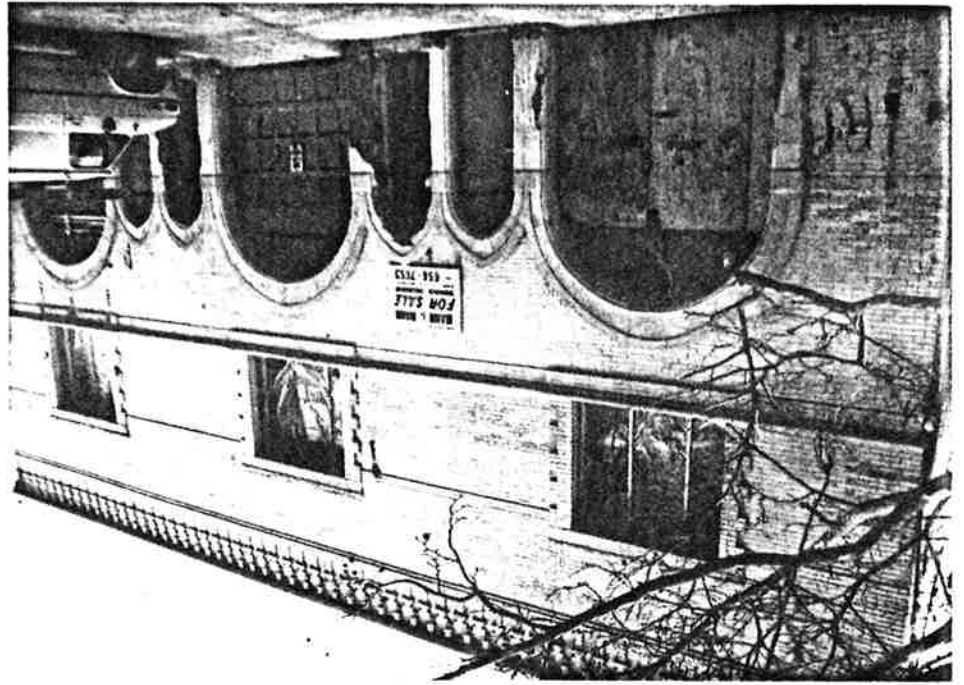


Palisade Avenue in Washington Village Neighborhood  
of Survey Area (Ward D6) KTHSI #0906-D6 pal,  
Jenney City, Hudson Co.  
Page 14 of 14 photo pages.

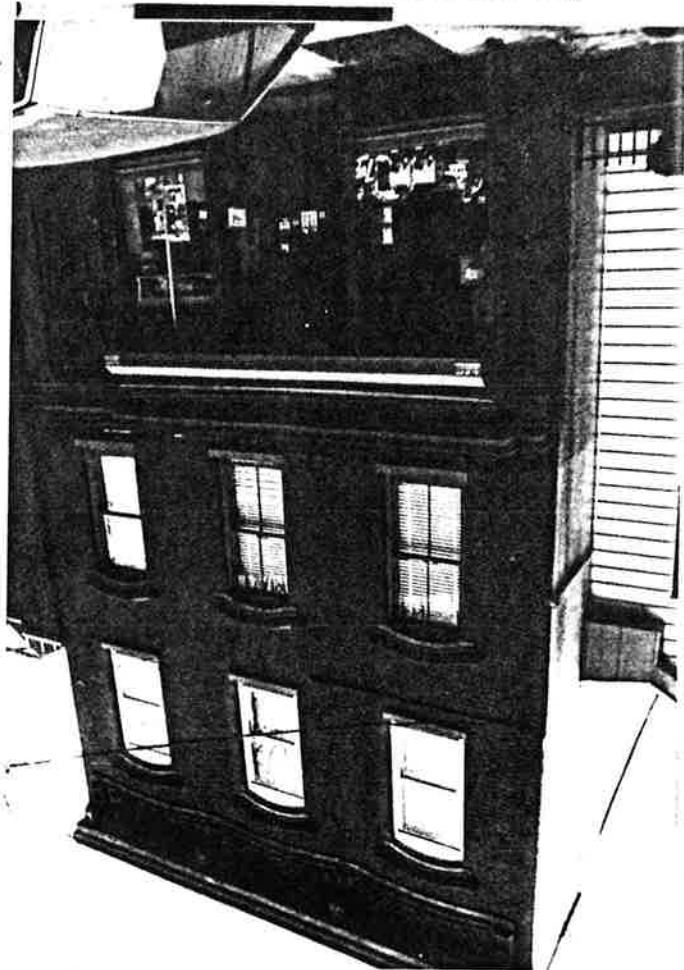
Site No. 0906-D6 pal  
556 Palisade Ave.  
Jenney City, N.S.  
Photo Neg. No. 242/37  
Map No. 25  
(before 1873)



Site No. 0906-D6 pal  
560-562 Palisade Ave.  
Jenney City, N.S.  
Photo Neg. No. 243/8A  
Map No. 26  
(before 1873)



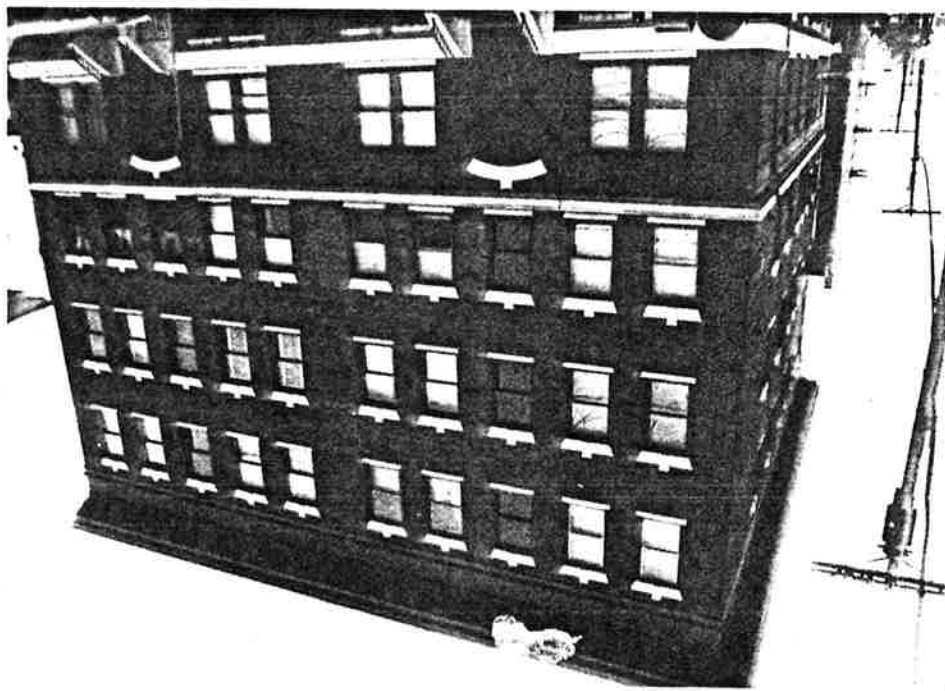
Site No. 0906-D6 pal  
 566 Palisade Avenue  
 Jersey City, N.J.  
 Photo Neg. No. 243/7A  
 Map No. 27  
 (before 1873)



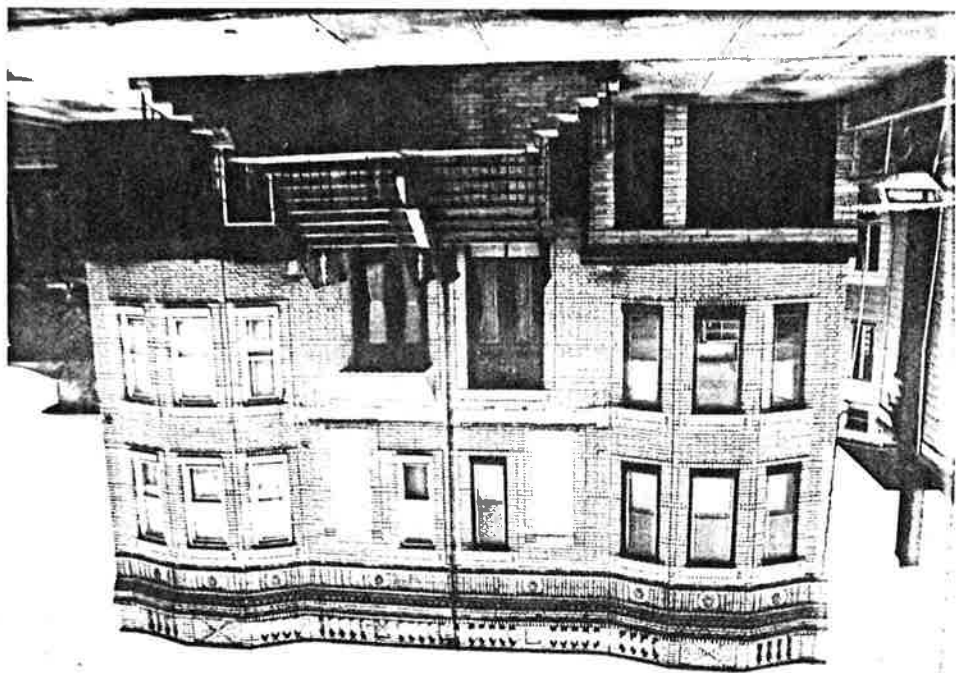
Site No. 0906-D6 pal  
 572 Palisade Avenue  
 Jersey City, N.J.  
 Photo Neg. No. 243/6A  
 Map No. 28  
 (before 1873)



Site No. 0906-D6 par  
596-600 Palinade Ave.  
Jewey City, N.J.  
Photo Neg. No. 243/4A  
Map No. 29  
(bat. 1896-1908)

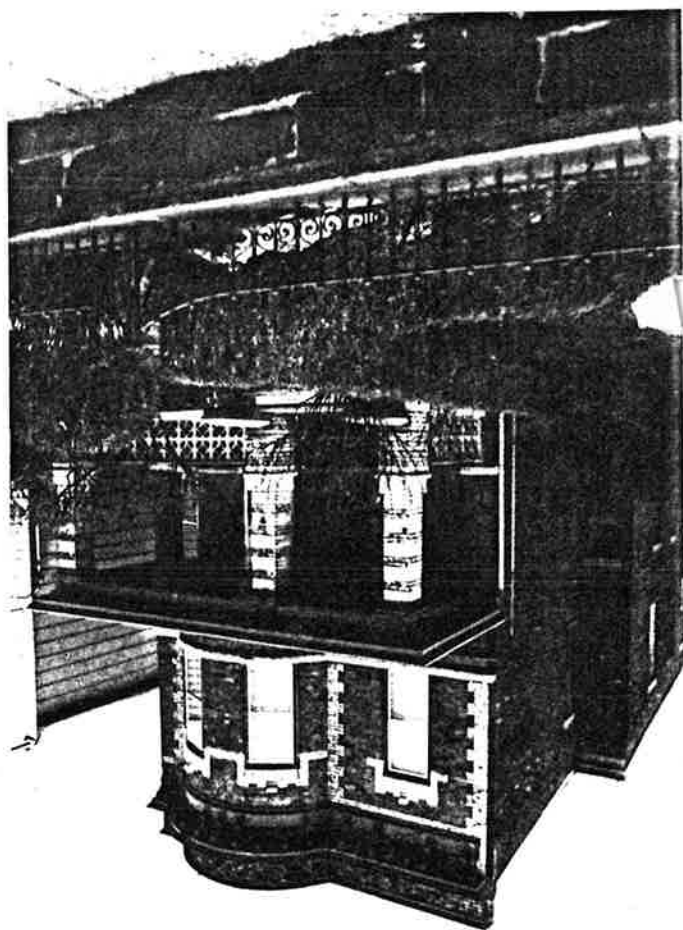


Site No. 0906-D6 par  
628-630 Palinade Ave.  
Jewey City, N.J.  
Photo Neg. No. 243/19A  
Map No. 30  
(bat. 1908-1919)



Palinade Avenue in Washington Village Neighborhood  
of Survey Area (ward D6) NJ HSI # 0906-D6 pal,  
Jersey City, Hudson Co.  
Page 17 of 17 photo pages.

Site No. 0906-D6 pal  
644 Palinade Avenue  
Jersey City, N.J.  
Photo Neg. No. 243/16A  
Map No. 31  
(bat. 1896-1908)



Site No. 0906-D6 pal  
650 Palinade Avenue  
Jersey City, N.J.  
Photo Neg. No. 243/151  
Map No. 32  
(bat. 1919-1928)